



Scotland's  
Trade Fair  
Spring

**BEST  
PRODUCT  
AWARD  
BRONZE  
2024**



*Cath Waters*  
SCOTTISH LANDSCAPES

**Wholesale Brochure 2025**

**OPEN AN ON-LINE ACCOUNT FOR EASY ORDERING**

**WWW.CATHWATERS.SCOT | sales@cathwaters.scot | 01470 521399**

ART, GIFTS, JEWELLERY, HOMEWARE & MORE...

INSPIRED BY SCOTLAND'S SPECIAL PLACES,  
WITH LOVE FROM THE ISLE OF SKYE



Hello, I'm Cath Waters, a Scottish landscape artist working from my studio on the beautiful Isle of Skye.

My artworks are atmospheric digital collages inspired by my love of the Scottish landscape and reflecting the solitude of Scotland's special places.

I design high quality, tasteful, Scottish gifts, wall art, jewellery, accessories, homeware and stationery.

We love working with retailers all around the globe. I've been selling wholesale for 10+ years to happy, repeat buyers and I'm delighted to have won Scotland's Trade Fair "Best Product Award" three times in recognition of quality, appeal, innovative design and price point.

My small company focuses on quality Scottish products. In fact, most of my products are made by a talented team at my workshop here on Skye. We are working towards being 100% "made in Skye" but anything we can't make in house is supplied by a select group of Scottish and UK based manufacturers.

It's important to me that we don't have any products printed cheaply overseas. This, of course, means we can keep a watchful eye on quality and colour, making sure you always receive our best work.

Best of all we can employ talented local people who really like making things!



TURN TO THE BACK PAGES FOR OUR  
IMAGE RANGES AND FOR INFO ON  
HOW TO PLACE AN ORDER.

OPEN YOUR TRADE ACCOUNT AT  
[WWW.CATHWATERS.SCOT](http://WWW.CATHWATERS.SCOT)

*Turn to the back pages to see all our designs*

## WHAT'S NEW?



For the first time in a few years, I'm introducing new artworks featuring my home island, Skye. I am also pleased to launch three exciting new products which I hope you will love as much as I do.

### NEW ARTWORKS

"Elgol Shore", "Cuillin Cottage" and "Ardtreck Lighthouse", Isle of Skye

### CERAMIC VASES

We're excited about our new, vibrant ceramic vases which are printed in my workshop here in Skye. Perfect for flowers or can also be used for kitchen implements.

### GLASS WORKTOP SAVERS

Our shiny, large glass worktop savers have been a popular product on our website. We can now make these in Skye and so are ready to offer them to our wholesale buyers for the first time.

### MEDIUM SILK SCARVES

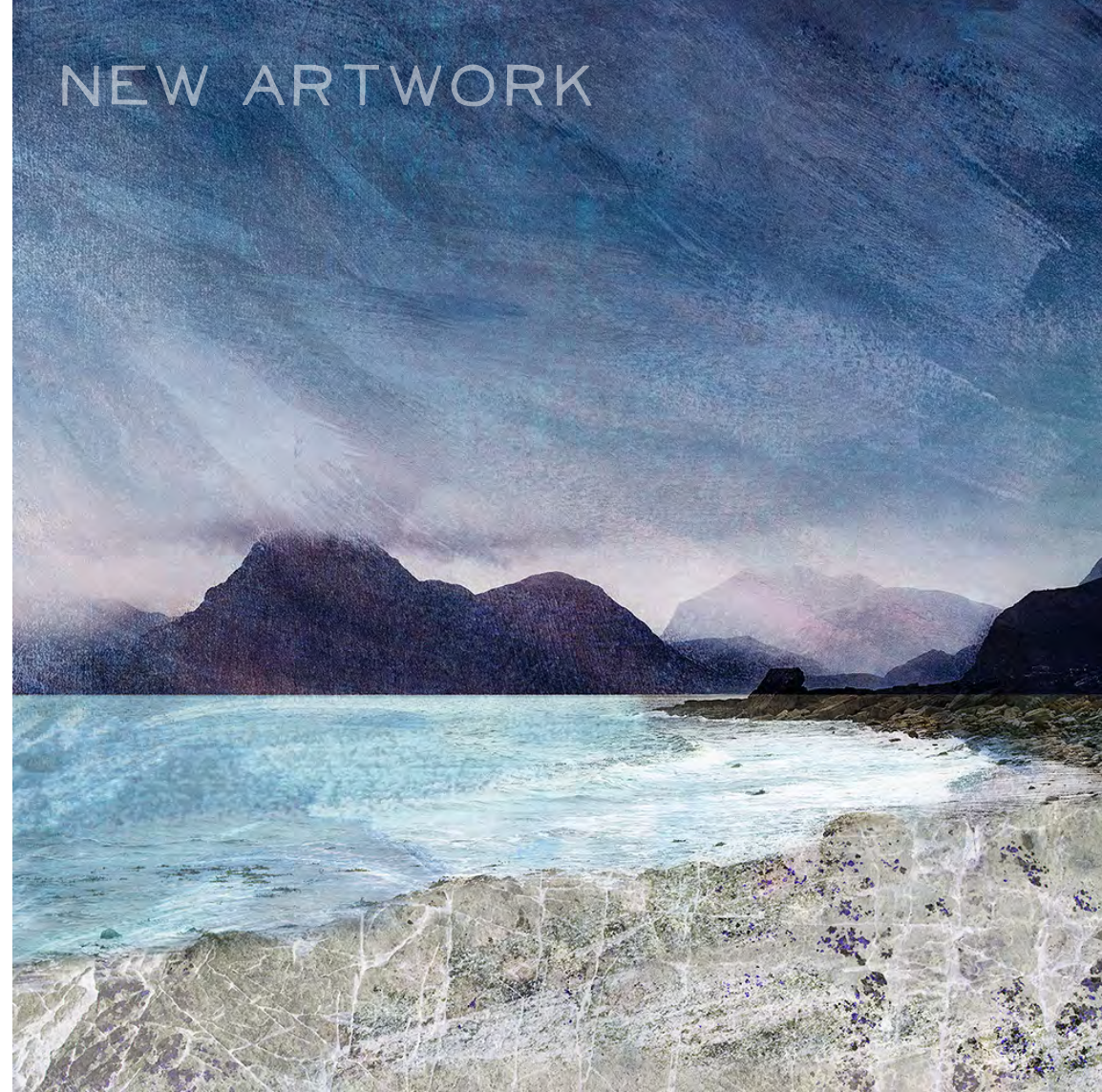
After listening to customer feedback, we now have a new, more versatile, 68cm square silk scarf. These will compliment our larger scarf sizes. Our previous smallest size (45cm square) will be re-branded as pocket squares.

### BUSINESS NEWS

In 2024 I moved my workshop from Grangemouth to Skye (that was quite exhausting!) and trained a fantastic new team to manufacture and ship your orders. We're now even better placed to continue to develop new home and gift products for your customers. We now make the majority of our product lines ourselves but our goal this year is to expand our production skills, particularly focusing on fabric products.



## NEW ARTWORK



### ELGOL SHORE, SKYE



New for 2025 and available in most products

# NEW ARTWORK

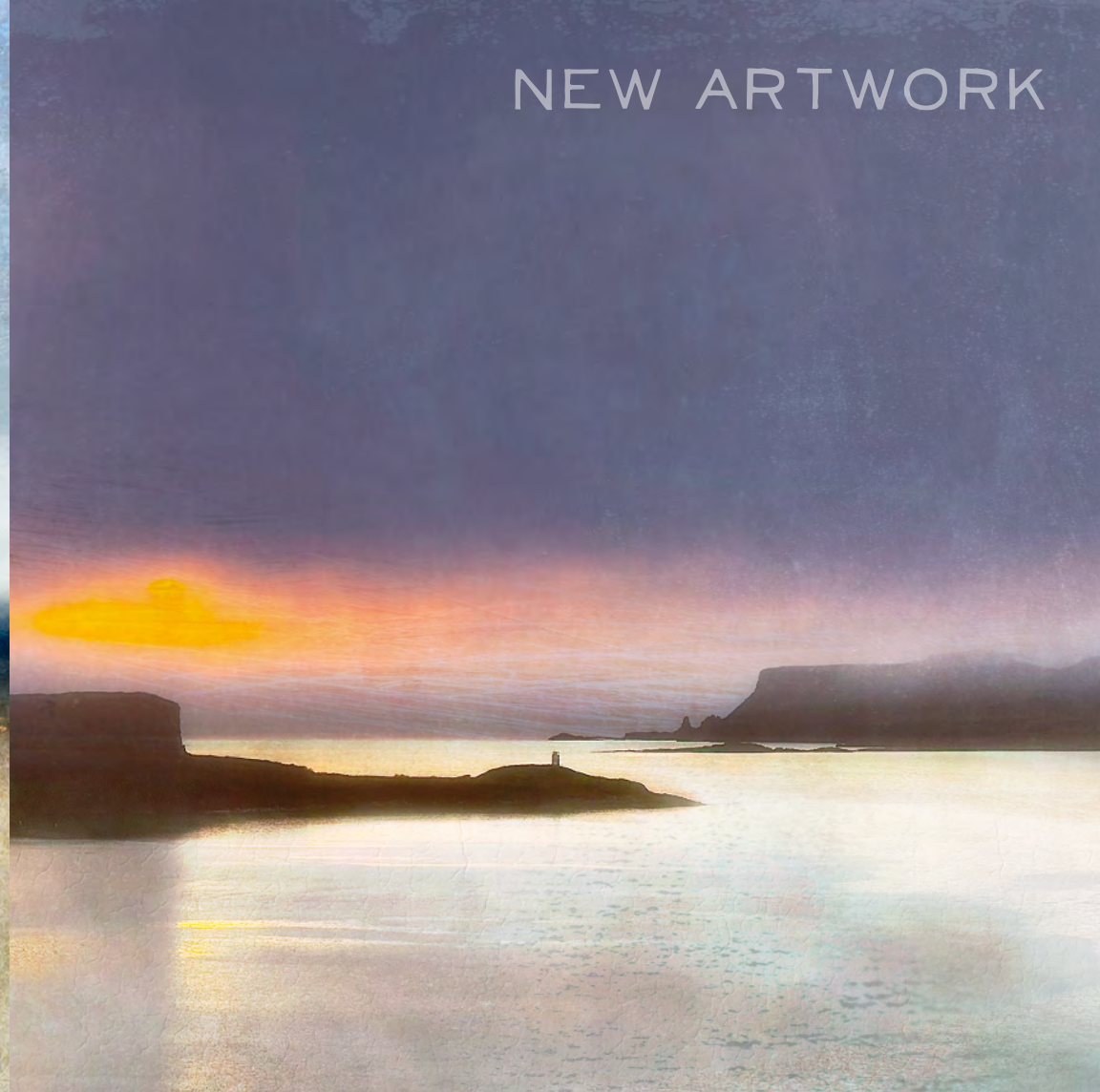


CUILLIN COTTAGE, SKYE



New for 2025 and available in most products

# NEW ARTWORK



ARDTRECK LIGHTHOUSE, SKYE



New for 2025 and available in most products

New for 2025 we are introducing our shiny, smooth glass worktop savers that also make beautiful table centerpieces or serving boards. Measuring 30 x 39cm they are perfect for protecting the worktop from messy spoon and cooking spills.

Printed by hand on the Isle of Skye and available in most image ranges.



# GLASS WORKTOP SAVERS

NEW PRODUCT

NEW PRODUCT



# CERAMIC VASES

New for 2025 we are introducing our beautiful ceramic vases. Measuring 20cm tall, these vases are perfect for flowers or for kitchen utensils. Printed by hand on the Isle of Skye and available in most image ranges.

Please note the ends of the image meet at the back so our vases are not suitable as a centerpiece.

Scotland's  
Trade Fair  
Spring

BEST  
PRODUCT  
AWARD  
BRONZE  
2024

# RECYCLED ECO-LAMP SHADES

*Turning single use plastic into luxury home-ware*



Cath's Scottish landscapes on a collection of beautiful 25cm drum lampshades.

Our award winning lampshades are a truly environmentally-aware product and are printed on fabric spun from yarn made from plastic bottles, keeping them out of landfill. The resulting polyester fabric prints beautifully and feels like satin.

Up-cycled handcrafted whisky barrel bases can be purchased at trade prices from Darach, in Inverness.

Our lampshades are a handcrafted product, made on the Isle of Skye

[Available in lots of designs. See our website](#)

# HEAVYWEIGHT COTTON TOTE BAGS



Our beautiful, double sided, large cotton tote bags made from digitally printed, heavyweight 10oz Panama cotton fabric.

Bags measure 41cm x 44cm and come with long black cotton handles.

Our bags are designed on the Isle of Skye and are printed and stitched by a traditional cotton company in Lancashire's textile heartland.

[Available in lots of designs. See our website](#)



# DOUBLE SIDED VELVET CUSHIONS



We hope you will love our range of sumptuous Scottish landscape velvet cushions, made in the UK by a traditional Lancashire textile company.

Each cushion is 45cm square with vibrant, removable covers, digitally printed on both sides with Cath's Scottish Landscape Art.

Cushions feature a hidden black zip fastening and a high quality, luxuriously comfy, feather inner pad.

Designed in Scotland, made in the UK.

Please note our new velvet cushions replace our previous single sided cushion range.



[Available in many designs. Please see website.](#)

100% Silk twill scarves with hand finished, rolled edges. New for 2025 we have introduced a new versatile sized 65cm x 65cm square scarf in addition to our classic 90cm x 90cm squares, 45cm x 45cm pocket squares and long 45cm x 180cm panoramic scarves.

Presented in gift boxes.

*Wear the colours of the Scottish land & sea.*

# SILK SCARVES



100% silk fabric printed in the UK. From 2025 scarves are cut and sewed in Cath's Skye workshop.



Available in lots of designs. See our website

# CERAMIC COASTERS



One of our most popular products, Cath's artwork on shiny, tactile 9cm diameter ceramic coasters. Each coaster is cork backed and they are available unboxed, boxed individually in matchbox-style white boxes or in luxury box sets of four.

Hand printed on the Isle of Skye



Available in all designs. See back pages.



SK19 Elgol Shore, Isle of Skye



SK16 Fishing the Little Minch



PK01 Plockton



AR05 Arisaig Aurora



SK01 Skye from the Bealach Na Ba, Applecross

# GICLEE PRINTS

We print all our own giclee prints here on Skye using the highest quality printing equipment, inks and papers. Each print has a signature and title below the image.

We only print on acid free fine art paper. When combined with our 12 colour pigment ink printing system, we can achieve perfect colour reproduction and produce beautiful, archival quality prints that will look as good as new for generations.

Cath's landscapes are available to trade buyers as open edition prints and come in two sizes: mini-prints are square 5x5" and standard size are either square 11x11" or panoramic 5x15" prints. Both are available in white frames or mounted using museum grade mount board and cello bagged. We can also provide prints on a roll for you to frame in house. Please enquire.

[Available in all designs. See back pages.](#)



SK21 Cuillin Cottage, Sligachan, Skye



SK20 Ardtreck Lighthouse, Skye



# MUGS

Our popular standard sized (10oz) ceramic mugs are available in over 20 Scottish Landscape designs and match our other tableware products such as ceramic coasters and table mats.

Mugs come gift boxed as standard.

Each mug is printed with care at Cath's studio on the Isle of Skye

Available in all designs. See back pages.



# PORCELAIN ORNAMENTS

Beautiful 7cm diameter fine porcelain hanging ornaments hand printed on one side with Cath's artwork. The artwork location is printed on the reverse and each ornament comes with a coordinating ribbon to hang it from.

These ornaments are perfect for hanging up around the house at any time of year

Hand printed on the Isle of Skye.



# FRIDGE MAGNETS

Our handy fridge magnets are 6cm x 6cm glossy coated, eucalyptus wood or MDF with a black magnetic back.

Our current stock is made in the UK but we will be printing all new stock in Cath's workshop on Skye.



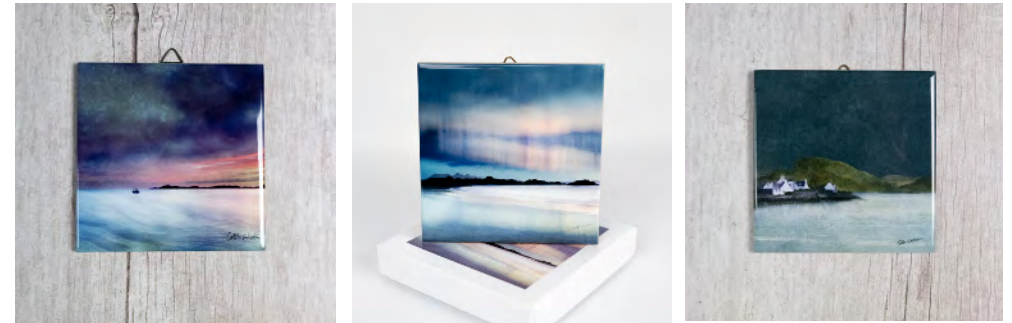
# WOOD FRAMED CERAMIC TILE ART

Contemporary, glossy 15 x15 cm ceramic tiles, framed in white wood with a wall hanging fixture on the back.

Can also be displayed free standing on a shelf.

Hand printed with care on the Isle of Skye.

# GIFT BOXED TILE ART



[Tiles are available in all designs. See website.](#)



Gift boxed 10cm cork backed ceramic tiles with hanging fixtures.  
Each tile is hand printed on the Isle of Skye.

# STERLING SILVER & ALUMINIUM WEARABLE ART JEWELLERY



We love our glossy aluminium and sterling silver bangles, earrings and necklaces featuring Cath's Scottish Landscapes.

The range is lightweight, hypo-allergenic and really easy to wear.

All pieces are gift boxed in premium branded grey packaging.

Handmade on Skye



[Available in most designs. See website.](#)



# CUFFLINKS



Classic cufflinks featuring Cath's Scottish landscape artwork.

Presented in grey gift boxes.

Cufflinks are made from polished, chrome coloured zinc alloy and printed aluminum.

Hand printed at Cath's studio on Skye.

[Available in most designs. Please see website](#)



# CHOPPING BOARDS

Our chopping boards / cheese boards are made from sustainably sourced eucalyptus wood, coated on both sides with a durable, food-safe, heat-resistant melamine.

One side features our design and the other a wood grain effect and logo.

Chopping boards come in two sizes -

Small: 230 x 170mm including handle, perfect for cutting lemons for a G+T!

Large: 295 x 255mm including handle, perfect for general use in the kitchen.  
(Large are end of line only)

Presented with a hanging tag showing the design and location.

Designed in Scotland and made in the UK.



[Available in most designs. See back pages.](#)

# TABLE MATS

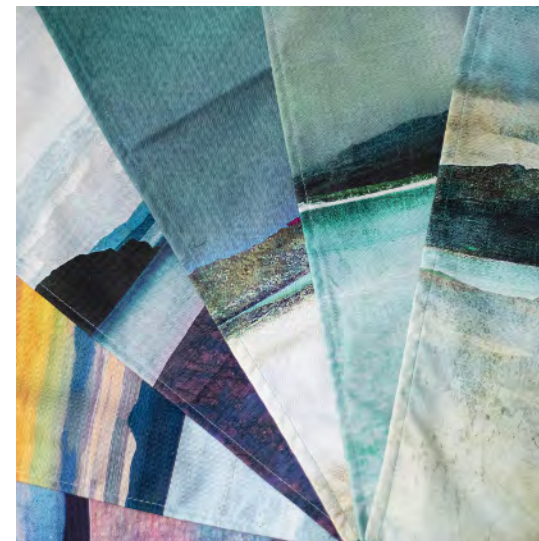
Cath's Scottish Landscapes on a range of glossy finish, chunky, melamine table mats. Each mat is finished with a sustainably sourced eucalyptus base and hard-wearing cork backing. Size: 29.2 x 21.6 x 0.5cm

Easily wiped clean place mats which withstand temperatures up to 140 degrees centigrade.

Designed in Scotland, made in the UK.



# TEA TOWELS



Beautifully printed organic cotton tea towels with hanging tabs.

We have chosen to print our artwork on 100% cotton half panama which is a medium/heavy weight 230gsm fabric with a very high-quality look and feel. Our tea towels are both durable and machine washable.

Tea towels are presented folded, tied with string and have a hanging tag showing the full design and location.

Our current stock is made in the UK. New stock will be made in Skye.

[Available in most designs. Please see website.](#)

# CARDS & NOTEPADS

Our handy A6 notepads are pocket sized with 20 blank pages and a printed 350gsm card cover. Perfect for holiday planning, notes and shopping lists.

Our ever popular cards are available as cello bagged or unbagged singles or a choice of three beautiful gift boxed sets of eight, featuring a mix of Scottish scenes, a mix of Skye scenes or a mix of Scottish Islands scenes.

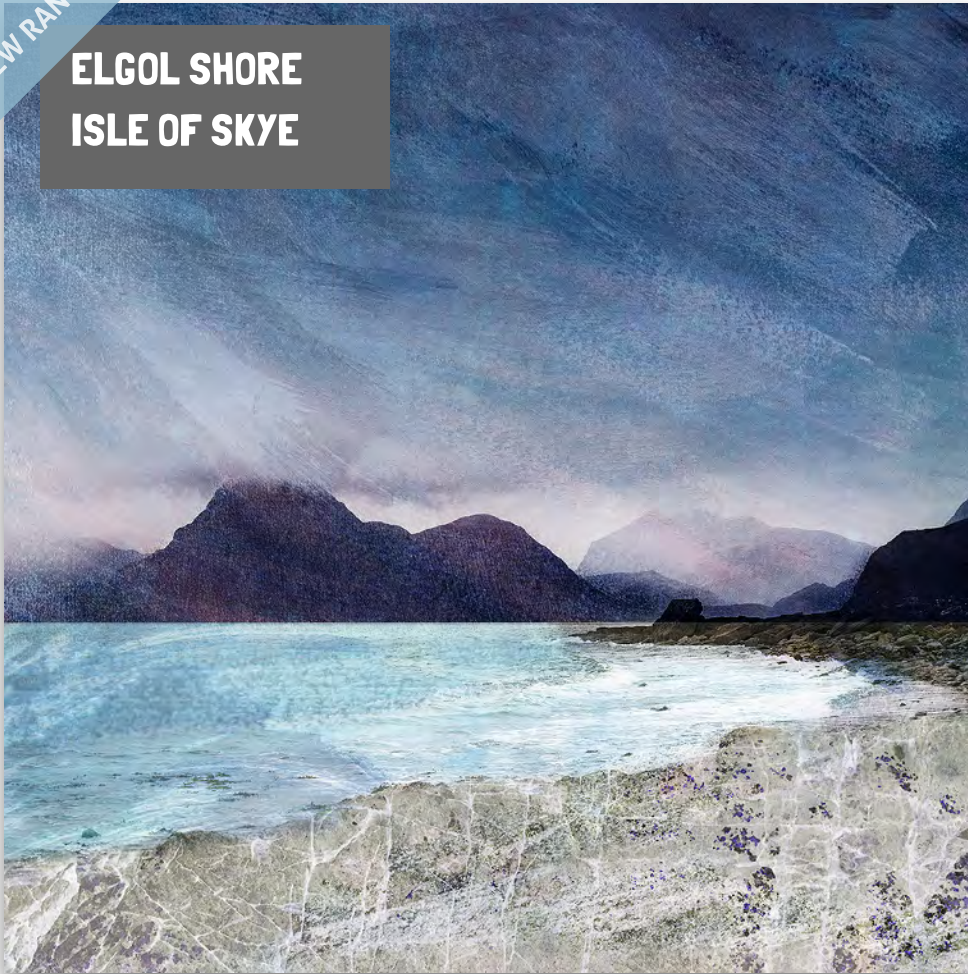
Our cards and notepads are printed in the UK using eco-friendly inks and card stock.



[Available in most designs. See back pages.](#)

NEW RANGE

## ELGOL SHORE ISLE OF SKYE



The views from the shores of Elgol village on Skye must be some of the best in Scotland. The start of many a boat trip across the water to the Cuillin and hidden lochs beyond.

ORDER CODE: **SK19**



NEW RANGE

## CUILLIN COTTAGE SLIGACHAN, SKYE



One of my favourite walks from Sligachan, Skye, past the lonely Allt Dearg cottage at the foot of the Cuillin. A starting point for climbers heading up to the Cuillin ridge or for the less adventurous, a low level wander past waterfalls with beautiful mountain views.

ORDER CODE: **SK21**



NEW RANGE

## ARDTRECK LIGHTHOUSE, SKYE



Off the beaten track at the northernmost part of my home peninsula, Minginish, an automated lighthouse signals the entrance to Loch Harport. Viewed here through the sea fog at sundown, from Gesto, across the water.

ORDER CODE: **SK20**



## SANGO BAY DURNESS



Sango Bay is a beautiful beach near the village of Durness in Sutherland. A popular stop on the North Coast 500 route, it's renowned for its stunning coastline, golden sands, and dramatic rock formations.

ORDER CODE: **NC01**

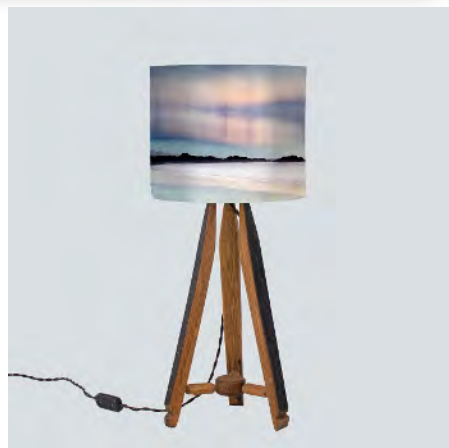


## ARISAIG AURORA



Camusdarach beach on the west coast of Scotland, near the village of Arisaig. The area is loved for its stunning scenery, soft white sands, and clear blue waters with evening sunsets looking over to the Isle of Rum. If you are lucky you may see the Aurora Borealis.

ORDER CODE: **AR05**

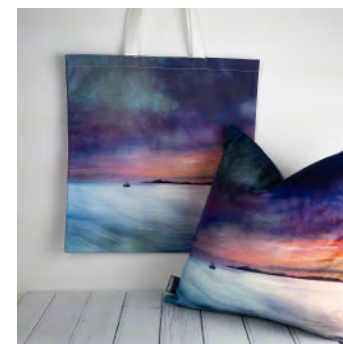


## FISHING THE LITTLE MINCH

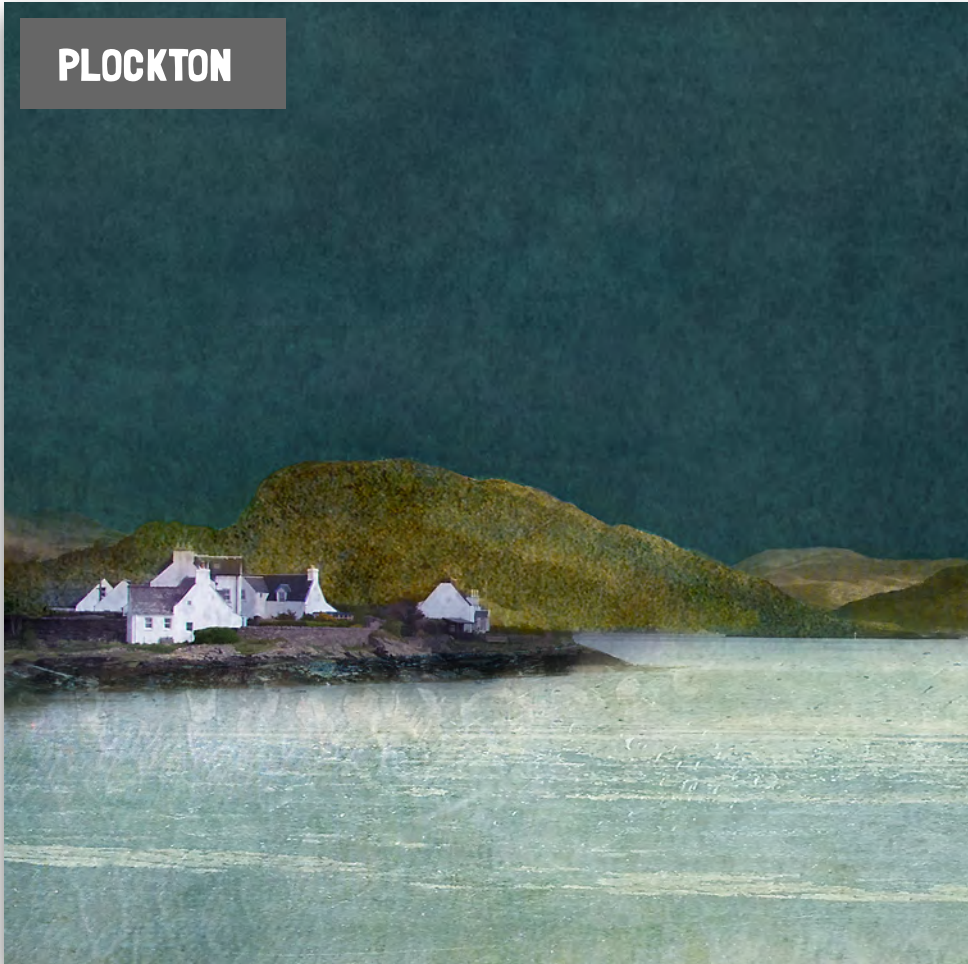


The Little Minch is a beautiful stretch of sea between Skye and the Western Isles. A fishing boat returns to shore at sunset with views to the Western Isles beyond.

ORDER CODE: **SK16**



## PLOCKTON



The Jewel of the Highlands", Plockton is a picturesque Highland village that sits on a sheltered bay with stunning views overlooking Loch Carron.

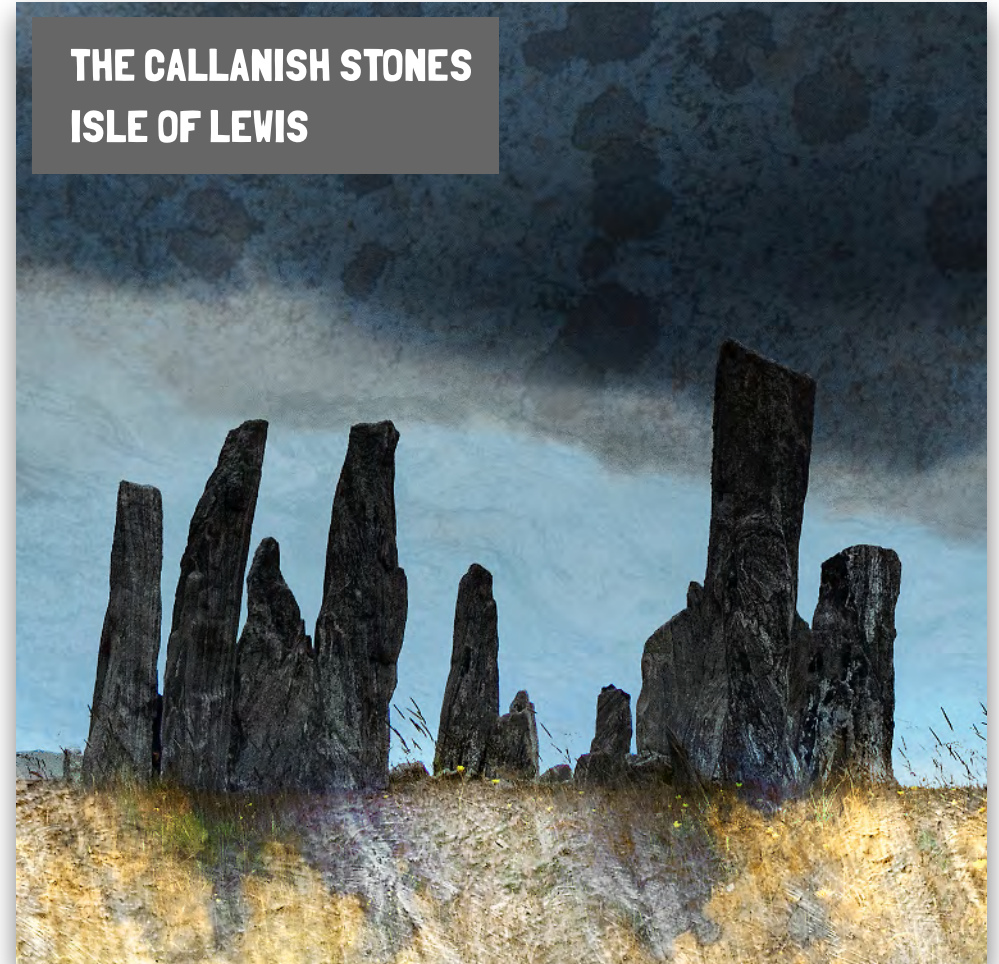


*The standard sized print for this artwork is panoramic.*

ORDER CODE: **PK01**



## THE CALLANISH STONES ISLE OF LEWIS



The magnificent Calanais (Callanish) Stones on the Isle of Lewis. The stones were a focus for prehistoric peoples and are thought to have been erected 5,000 years ago, pre-dating Stonehenge.



*The standard sized print for this artwork is panoramic.*

ORDER CODE: **LW02**



## TALISKER BAY ISLE OF SKYE



Talisker beach near Carbost on the Minginish peninsula, Isle of Skye, is a spectacular place to watch the sunset as the colours change around imposing sea stacks.

ORDER CODE: **SK15**

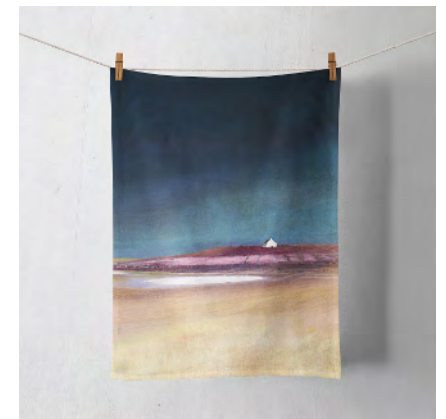


## UIST MACHAIR



Machair is low lying and fertile grassy and sandy plains, often cultivated or left fallow to be covered in beautiful wild flowers and grasses. The most extensive machair in the Hebrides can be found on the west coast of the Uists.

ORDER CODE: **UT01**





## EDINBURGH SKYLINE FROM EAST LOTHIAN

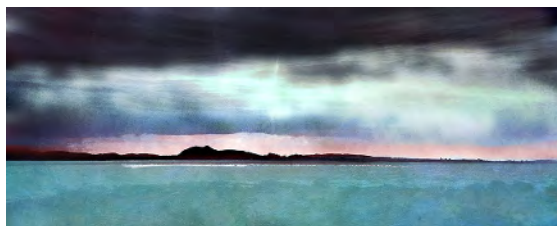


The distinctive skyline of the city of Edinburgh from Arthurs' Seat, the city centre and castle all the way to Leith. Viewed at dusk from Longniddry on the East Lothian coast.



*The standard sized print for this artwork is panoramic.*

ORDER CODE: **EH01**



## RED CROFT BARRA



The Isle of Barra is one of the southernmost inhabited islands of the Hebridean chain. Famous for sandy white beaches and beautiful scenery mixed with rich history and wildlife.

ORDER CODE: **BA01**



## INNER SOUND, SCAPLAY AND SKYE



The Inner Sound is a stretch of sea between Skye and mainland Scotland within the sound are many smaller islands such as Scalpay. This is the view across the sound from Applecross.

ORDER CODE: **SK14**

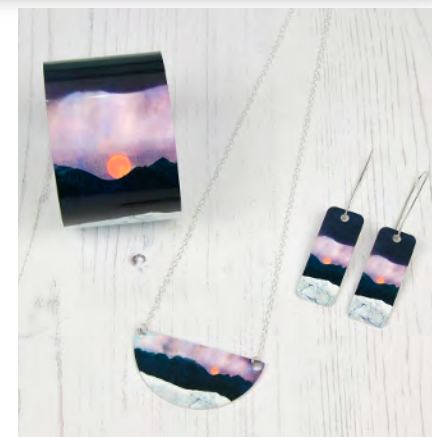


## MOONRISE OVER CUILLINS, SKYE



A strawberry summer moon rising over the Cuillin ridge. Viewed from Cath's studio near Carbost on the Isle of Skye.

ORDER CODE: **SK12**



## WINTER LUSKENTYRE



Snow covered hills are the backdrop for the beautiful Luskentyre beach on the Isle of Harris.



*The standard sized print for this artwork is panoramic.*

ORDER CODE: **HR03**



## HARRIS FROM CORAL BEACH, SKYE



Coral Beach near Claigan is one of the most beautiful beaches on the Isle of Skye, with stunning views out to the Western Isles. Despite its name, the beach is not actually made of coral but the white "skeletons" of a local seaweed called maerl.

ORDER CODE: **SK13**



**SKYE FROM THE  
BEALACH NA BA,  
APPLECROSS**



Views to Skye from the dramatic mountain road, the Bealach Na Ba or "pass of the cattle" on the Applecross peninsula.

ORDER CODE: **SK01**



**WESTERN ISLES  
FROM SKYE**



The Western Isles under a blazing sunset viewed from Camus More beach on the Trotternish peninsula on the North West coast of the Isle of Skye

ORDER CODE: **SK11**



## REEF BEACH ISLE OF LEWIS



Reef Beach or Traigh na Berie is a spectacular stretch of white sand between Kneep and Reef on the Valtos peninsula of the Isle of Lewis.

ORDER CODE: **LW01**



## SOUND OF MULL



Evening views over the Sound Of Mull to Mull, a beautiful island which is popular with tourists, whisky lovers and hill walkers.

ORDER CODE: **ML02**



## SKYE & RAASAY FROM APPLECROSS



Views across to Skye and Raasay (recognisable by the flat topped Dun Cann), from the idyllic Sand Beach on the Applecross peninsula.

ORDER CODE: **SK03**



## THE SUMMER ISLES FROM ACHILTIBUIE



A crofting whitehouse by the village of Achiltibuie set against the Summer Isles archipelago, which lies in the mouth of Loch Broom off the Coigach Peninsula in the North-West Highlands of Scotland.

ORDER CODE: **ACT01**



## THE ISLE OF ARRAN



Isle of Arran, viewed from Argyll across the sound of Bute.

ORDER CODE: **ARN01**



## SPECIAL ORDERS

Every year we discontinue some ranges to make room for new ones. We know that some of the older designs remain popular with your customers and we can still supply certain products featuring these images on request. Minimum orders may apply and lead times may be longer. Please get in touch and find out more. Some examples of discontinued ranges below.



HR02 Salt Marshes Harris

APX01 Bealach Na Ba

MY01 Isle of May



ARD04 Rum from Ardnamurchan

BRK01 The Bass Rock

PB01 Portobello



GL01 Gairloch Wave

HR01 Luskentyre Harris

JU01 Jura



# HOW TO ORDER

We encourage buyers to use the quick and easy Trade Portal on our website. Visit [www.cathwaters.scot](http://www.cathwaters.scot), call or email us to open an account.

We are more than happy to advise on best sellers, product ranges, display ideas and answer any other queries.

Just get in touch and we can help get you started.

Email: [sales@cathwaters.scot](mailto:sales@cathwaters.scot) Tel: 01470 521399

*Cath Waters*  
TRADE



1. **Apply for a trade account** on our website [www.cathwaters.com](http://www.cathwaters.com) for quick and easy online ordering.
2. **Log in to our trade portal** and all products available to trade buyers will be displayed with wholesale prices ex VAT.
3. Save your favourites, view previous orders and place repeat orders.
4. No payment is required to place your order online. Just checkout and we will send you a proforma or an invoice after shipping, depending on your credit terms. Most of our UK buyers are on net 30 payment terms after their first order.
5. You can also order by phone, email or send us a purchase order but please log onto your trade account before ordering to check that the products you want are available. **Not all products are available in every image.**
6. You will receive an order confirmation email and one of the team will contact you if we have any questions about your order.
7. Because we make a lot of our products to order, lead time to dispatch your order is **one to two weeks**. Due to our remote location on Skye, your UK order may be **2-5 days in transit**.



# CATH WATERS LTD

WWW.CATHWATERS.SCOT

## WORKSHOP

Cath Waters Ltd  
4 Lochside  
Dunvegan  
ISLE OF SKYE  
IV455 8WB

## ENQUIRIES

sales@cathwaters.scot  
01470 521399  
www.cathwaters.scot



OPEN A TRADE ACCOUNT  
FOR SIMPLE ONLINE ORDERING  
www.cathwaters.scot

Company No. SC505018 | VAT No. GB224173239

