



EST

1940

J M COOPER

KNITWEAR

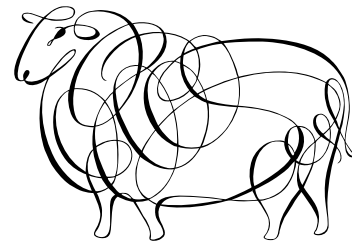
STOCK SERVICE BROCHURE

2026

ABOUT US

The introduction to knitwear in our family started during the war as a postman in a small village on the outskirts of Leicestershire began to provide families with not only their mail but with classic British wool knitwear during those harsh winter months. Many years after, he then started production on a much larger scale on several traditional knitwear styles using pure British wool to supply a number of high street retailers many of whom are still around today.

Carrying on that legacy, J M Cooper Knitwear offer a full range of knitwear styles including ladies, men's, children's and a variety of accessories. All of our products are made from 100% British wool within our factory situated in Barwell, Leicestershire in the heart of the UK.

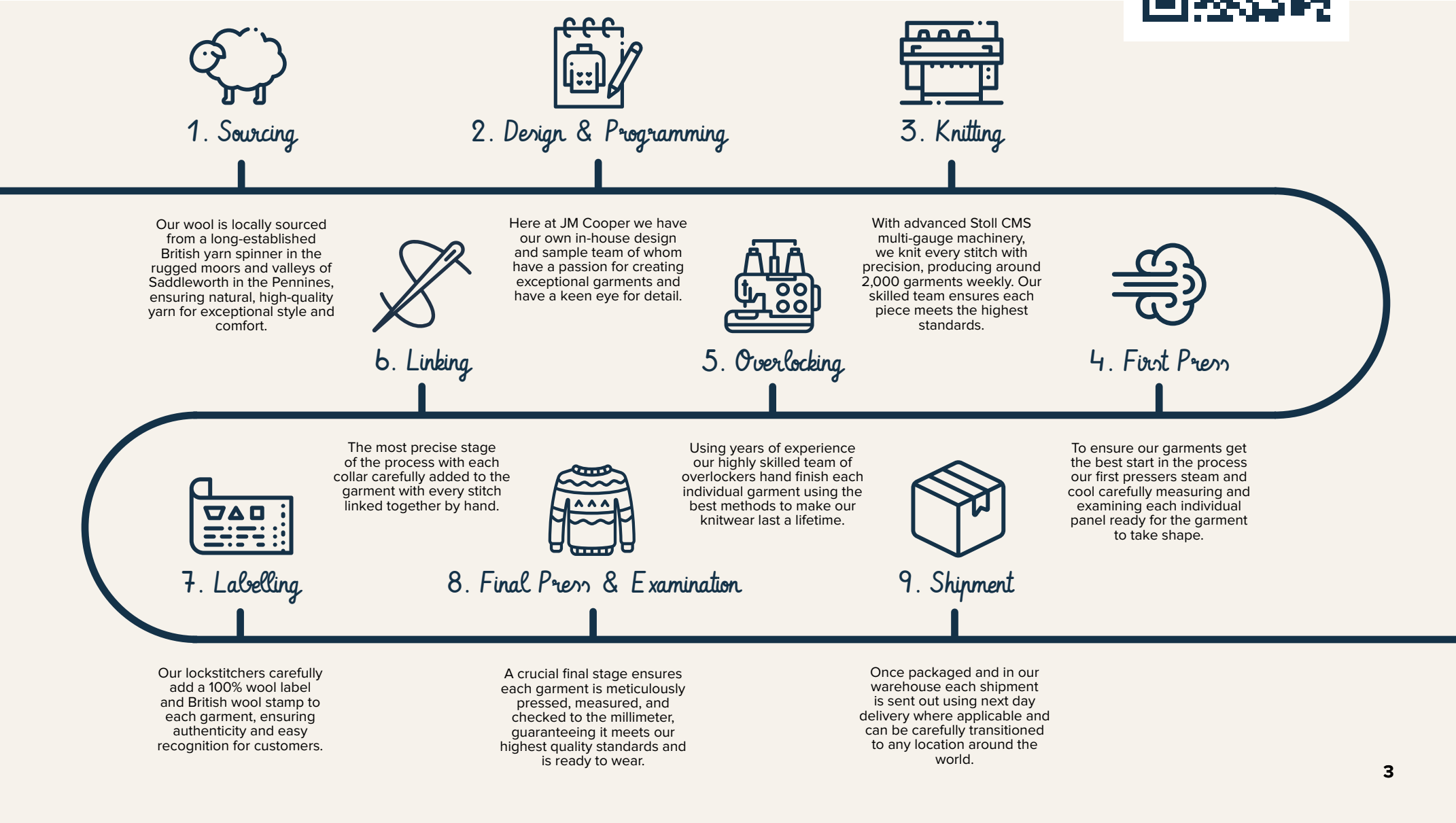


THE CAMPAIGN FOR WOOL



FROM SHEEP TO SWEATER

The nine vital stages of how we turn a raw material into the finest knitwear



WOMENS COLLECTION



Best
Seller

Ladies Buckle Cardigan
CODE SS2088



012 020 027 064



Best
Seller

Ladies Fly Collar Cardigan
CODE SS2107



001 020 027 028 064

MADE IN THE UK



Ladies Sheep Scene Cardigan

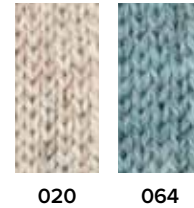
Crafted from 100% British wool our sheepscene fly collar cardigan blends classic Aran patterns with a stunning yorkshire dales landscape front and back. Using traditional 2 hole wood buttons adding a contemporary touch



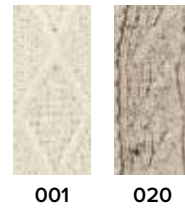
NEW PRODUCT

Ladies Black Sheep Cardigan

CODE SS5996



CODE SS6445



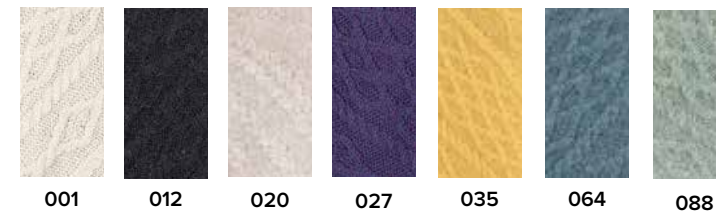
Ladies Lumber Cardigan

CODE SS1173



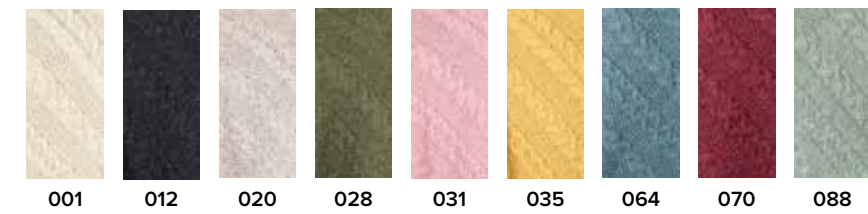
Ladies Long Neck Poncho

CODE SS2100



Ladies V-Neck Poncho

CODE SS2288



MADE IN THE UK



NEW PONCHO

Ladies Black Sheep Long Neck Poncho

Our best selling black sheep range now in a one size fits all long neck poncho.

CODE SS21467

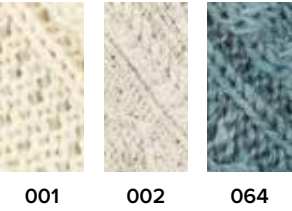


NEW PONCHO

Ladies Sheep Scene V Neck Poncho

Our new sheep scene V-neck poncho is a one size fits all garment in two of our most popular colours, Nep and Sage green.

CODE SS8809





Ladies Sheep Border Cable
CODE SS1443



002



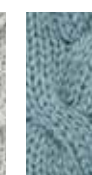
010



Ladies Cable Roll Neck
CODE SS1446



010



064



083

MADE IN THE UK



UNISEX
COLLECTION



Unisex Aran Jumper
CODE SS1175





Best Seller



NEW COLOURS

Unisex Sheep Scene Jumper

CODE SS69856



002



064



088



MADE IN THE UK

NEW PRODUCT

Unisex Highland Cow Jumper

A one off piece using an authentic image of our very own much loved highland cow.

CODE SS9778



002

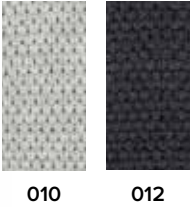


Unisex Popcorn Crew

Our new unique popcorn chunky stitch crew featuring a drop shoulder offering both comfort and style in either Haze or Charcoal colour.



CODE SS98567



Unisex Cable Zipper

Traditional style zipper with a durable longer zip is now a must have product that can be worn for both a smart or casual occasion in our much loved classic Navy and Ecru colours.

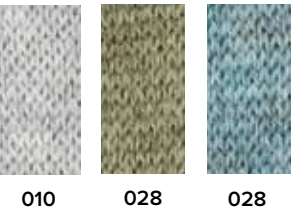


CODE SS76998



Unisex The Black Sheep Sweater

CODE SS77609





Guernsey Unisex Crew Neck Jumper, 100% British wool

Originating from the Channel Islands, the traditional Guernsey has been worn for centuries originating from the Channel Islands. Hand knitted by fishermans' wives to protect them both from the cold and sea spray. Our Polperro guernsey keeps within the classic design and techniques to bring a touch of heritage to any line of knitwear.



CODE SS2012



001



003



Unisex Breton Sweater

Our Unisex Breton is perfect for both genders with a timeless Nautical theme providing excellent warmth and style.



CODE SS2504



001



003



Submariner Jumper 100% British wool

The Submariner jumper originally supplied to the Royal Navy and now developed into an iconic British sweater. With its roll neck, deep hem and cuffs this garment is able to provide warmth, comfort and style perfect in cold conditions. As with all our products, these are manufactured from 100% pure British wool from sheep roaming the Pennine Hills.



CODE SS2401



001

003

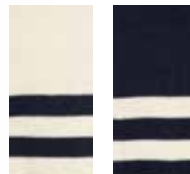


100% British Wool Breton Submariner

Inspired by the Submariner design adding our stylish Breton stripes creates an elegant piece for any wardrobe.



CODE SS2402



001

003

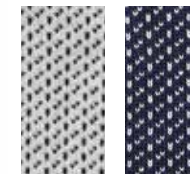


Unisex Nordic Jumper

Again, like all our jumpers, this Traditional Nordic Fisherman knit is made using 100% British Wool creating a softer feel but yet durable design.



CODE SS21041



001

003

MADE IN THE UK

NEW PRODUCT

MERINO SUBMARINER



MERINO

100% NATURAL WOOL

Merino Submariner

Using the finest merino wool our newly designed Submariner sweater combines style and comfort providing excellent warmth throughout.

CODE SS3508



001



003



MADE IN THE UK

Merino Breton Submariner

Our merino Breton Submariner adds that modern twist to a classic nautical style jumper combining a soft cosy feel with durability.



CODE SS3510



001



003



Men's Hillwalker Crew

CODE SS2115



005



072



Men's Cable Crew Neck

A classic design featuring an all over knitted cable pattern providing both durability and warmth for that casual look.



Unisex Tunic Jumper

CODE SS2106



022



072



CODE SS2356



003



021



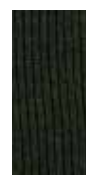
Men's Tweed Patch Crew Neck

Our woven tweed patches hand stitched on using twin needle stitching is both durable and timeless.

CODE SS2103



005



015



021



MADE IN THE UK

Men's Suede Patch Crew Jumper

CODE SS2101



014



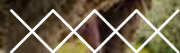
021



022



CHILDRENS COLLECTION



Children's Highland Cow
CODE SS3325



002



Children's Tractor
CODE SS6678



002



**Children's Sheep
Border Tunic**

CODE SS1180



002



**Children's Lumber
Cardigan**

CODE SS1178



001



**Children's Sheep
Scene Tunic**

CODE SS1185



002



**Children's Crew
Neck**

CODE SS1179



001



*Best
Seller*



NEW PRODUCT

**Children's The Black
Sheep Sweater**

CODE SS4489



010



028



028



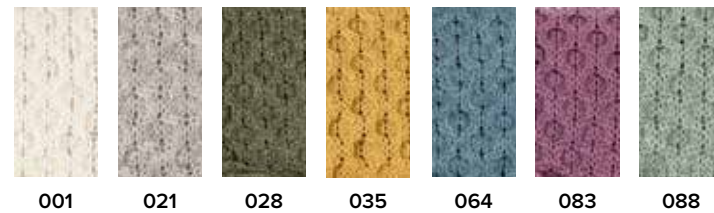
ACCESSORIES



Aran Sheep Throw

All of our throws are 5x4ft and made using our specialised CMS 822 HP wide bed multi gauge machine.

CODE SS2109



CODE SS2109/001



CODE SS2109/064



CODE SS2109/083



CODE SS2109/088

MADE IN THE UK

Custom patterns/designs are available to meet MOQs. Please enquire about POS display units for throws. Availability of some colours may vary.



Nautical Throw

All of our throws are 5x4ft and made using our specialised CMS 822 HP wide bed multi gauge machine.

CODE SS2167



Highland Cow Scarf

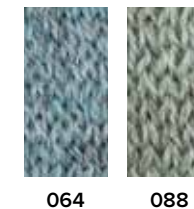
CODE SS0001



NEW PRODUCT

Black Sheep Scarf

CODE SS5663



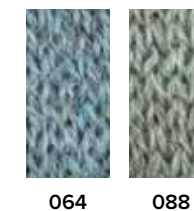
Highland Cow Hat

CODE SS0002



Black Sheep Hat

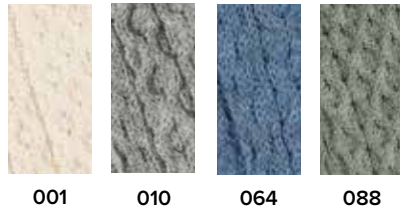
CODE SS5676



MADE IN THE UK



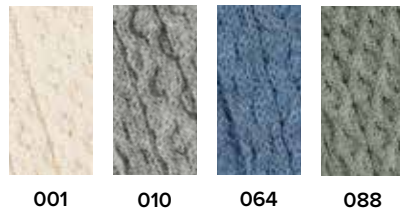
Aran Sheep Scarf
CODE SS0003



Aran Thistle Scarf
CODE SS0005



Aran Sheep Hat
CODE SS0004



Aran Thistle Hat
CODE SS0006



COLOUR SWATCHES

• Denotes Natural Undyed
Denotes up to 3% Nepp



ROSE MIX
031



AUTUMN GLOW
070



BLOSSOM
068



LUPIN
083



CASSAT
013



HEATHER
027



SUMMER STORM
064



MALLARD
072



DENIM MIX
005



NAVY
003



CHARCOAL
012



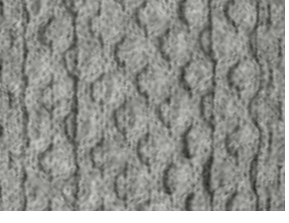
SAGE GREEN
088



ARAN NEPP
#002



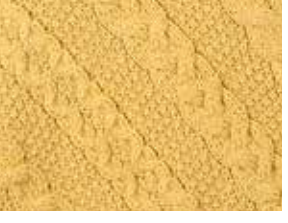
PURE ARAN
•001



HAZE
010



LIGHT GREY NATURAL
•021



SUNFLOWER
035



DARK APPLE
028



BURNT ORANGE
051



DARK GREY NATURAL
•022



SKIDDAW NEPP
#020



OATMEAL
040



DERBY TWEED
014



LODEN
015

If you would like to place an order or have any other queries please don't hesitate to contact us.

If you have any questions regarding bespoke designs or minimum order quantities (MOQs), please note that any alterations, design changes, or requests for colours different from those listed on our products will require a minimum order quantity of 48 pieces per colourway.

John Cooper

T: 01455 841660

E: cooperjm@btconnect.com

W: www.jmcooperknitwear.co.uk

Ryan Cooper

T: 01455 841660

E: cooperjm@btconnect.com

W: www.jmcooperknitwear.co.uk

Please note, any new accounts are pro forma style invoice unless agreed otherwise directly with John Cooper.

Carriage Costs

Country of Shipping	Orders Below 1000GBP Cost Per Box (Up to 20KG)	Orders Above 1000GBP Cost Per Box (Up to 20KG)	Delivery Time (Once dispatched)
United Kingdom	£10.00	FREE	Next Working Day
Northern Ireland	£15.00	£10.00	2-3 Working Days
Countries Within EU	£20.00	£15.00	2-3 Working Days
Countries Outside of EU – Transport Costs/Times may vary.			*Consignment ref Provided*

NOTES

Week	Monday	Tuesday	Wednesday	Thursday	Friday	Saturday	Sunday
1							
2							
3							
4							
5							
6							
7							
8							
9							
10							
11							
12							
13							
14							
15							
16							
17							
18							
19							
20							
21							
22							
23							
24							
25							
26							
27							
28							
29							
30							
31							
32							
33							
34							
35							
36							
37							
38							
39							
40							
41							
42							
43							
44							
45							
46							
47							
48							
49							
50							
51							
52							
53							
54							
55							
56							
57							
58							
59							
60							
61							
62							
63							
64							
65							
66							
67							
68							
69							
70							
71							
72							
73							
74							
75							
76							
77							
78							
79							
80							
81							
82							
83							
84							
85							
86							
87							
88							
89							
90							
91							
92							
93							
94							
95							
96							
97							
98							
99							
100							



GLEN
LOCH[©]



CONTEMPORARY ARAN
HERITAGE KNITWEAR

