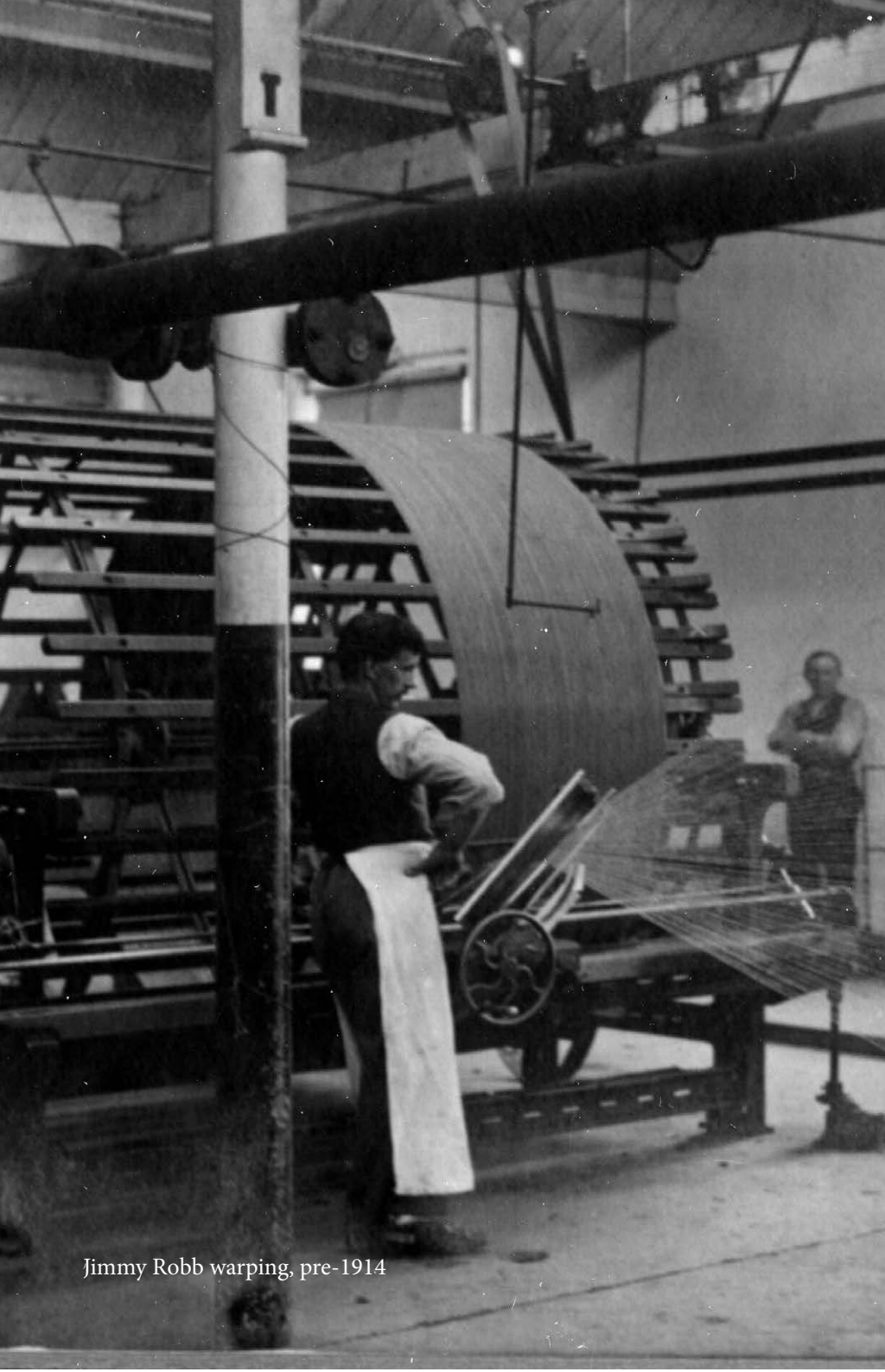


*Remony*



Early 2026

Made in Scotland  
Est. 1783



Jimmy Robb warping, pre-1914

*In 1783, on a farm called Remony*

near the banks of Loch Tay in Highland Perthshire, an enterprise was born that would go on to champion the very best in Scottish textiles for centuries to come.

From our rural beginnings, spinning the wool of the Macnaughton family flock, to being recognised around the world for beautiful fabrics and home accessories. Our story has been long, and it is still being written.

Specialising in woven woollen textiles, our mills in the Highland town of Keith and on the West Coast Isle of Bute, boast experts in their field. Dedicated and talented craftspeople behind every fabric.

Each Remony throw has been inspired by our homeland - the vibrant colours, intricate structures, exciting patterns and the welcoming soft finish. From our home to yours, enjoy a little piece of Scotland.





Loch Tay - Kenmore, Perthshire



# Throws

Auchterarder, Perthshire





Nature



THR756/009  
Highland Cow Rust

## *The Nature Collection*

A beloved Remony collection, hand drawn illustrations beautifully capture Scotland's rich nature and wildlife. Each design is then translated by our talented designers into intricate jacquard weaves, bringing them to life, in their own unique way.





THR756/006  
Stag Grey



THR756/002  
Stag Fawn



THR756/003  
Labrador Bran



THR756/007  
Hare Fawn



THR756/001  
Hare Grey



THR756/027  
Multi Dog Fawn



THR756/018  
Leaf Topaz



THR756/039  
Leaf Oatmeal



THR756/017  
Feather Blossom



THR756/040  
Feather Silver



THR756/014  
Thistle Grey



# Lunan



THR848/005  
Tidal



THR848/001  
Shore



THR848/003  
Sands



THR848/006  
Meadow



THR848/102  
Mist



THR848/002  
Bay



THR848/004  
Bracken



THR848/101  
Pebble



THR848/103  
Dune



# Duniña



THR861/001  
Natural



THR861/002  
Topaz



THR861/003  
Sorbet

100% merino lambswool ~ 140cm x 180cm, including purled fringe



# Milton



THR861/007  
Pebble



THR861/008  
Glade



THR861/009  
Melba

100% merino lambswool ~ 140cm x 180cm, including purled fringe





A close-up photograph of a red and white patterned scarf with fringes hanging from a tree branch. The scarf features a repeating geometric pattern and long, light-colored fringes. The background is a blurred forest scene with warm, golden light filtering through the trees. Another similar scarf is visible in the background on the right.

Balıntyre



THR863/001  
Sand



THR863/003  
Aquamarine



THR863/005  
Clementine



THR863/002  
Cloud



THR863/004  
Cornflower



THR863/006  
Foxglove



# Fortriu

A wooden bench with a blue and white geometric patterned blanket draped over it, situated on a rocky shore next to a body of water. The blanket features a complex, interlocking geometric design in shades of blue and white, with a fringed edge. The bench is made of light-colored wood and is positioned on a rocky shore. The water is calm, reflecting the bench and the blanket. The background is a dark, wooded area.

## *The Fortriu Collection*

Between the 4th and 10th centuries AD, the Pictish Kingdom of Fortriu ruled swathes of what would one day become Scotland.

The Picts left their lasting mark across their land, in the form of intricately carved stones. Their designs standing as a testament to the sophistication of their culture and their deep understanding of their surroundings.

The Fortriu collection captures these complex Pictish patterns, developed from the knowledge and research of artist Elaine Ogilvie.

Woven in merino lambswool from colours carefully developed to reflect what could have been naturally dyed during the time of the Picts, created from the natural palette of the bountiful landscape they lived in.

Available in three unique designs, these centuries old, enduring patterns result in a throw with exciting contemporary appeal.



THR907/002  
Woad



THR907/003  
Stone



THR907/001  
Mead

100% merino lambswool ~ 140cm x 180cm, including purlled fringe



Marée





THR756/031  
Arctic



THR756/032  
Sepia



THR756/033  
Feather



THR756/034  
Mist



THR756/030  
Driftwood

100% merino lambswool ~ 140cm x 180cm, including purled fringe



## *The Maree Collection*

A long-time favourite in the Remony collection. Inspired by the nature and biodiversity surrounding Loch Maree in Wester Ross, each throw captures exactly that. From the soft tones of the cool water and the loch's shore blanketed in thick heather; to the bright sparks of colour created by the incredible sunsets, wildlife and plants that grow and thrive in this beautiful corner of Scotland.



THR756/035  
Amethyst



THR756/036  
Ember



THR756/037  
Jade



THR756/038  
Spice

# Moraig



THR895/001  
Jade



THR895/002  
Bronze



THR895/003  
Pewter

100% merino lambswool ~ 140cm x 180cm, including purled fringe







# Carroglen



THR862/001  
Mushroom



THR862/002  
Opal



THR862/003  
Silver

100% merino lambswool ~ 140cm x 180cm, including purled fringe

# Pitnacree



THR861/004  
Stone



THR861/005  
Sea Blue



THR861/006  
Rose







Croftmore



THR896/001  
Amber



THR896/002  
Heather



THR896/003  
Seaglass

## *The Croftmore Collection*

Inspired by one of the richest chapters in Scotland's textile heritage - Fair Isle knitting patterns are recognised the world over. First established during the 18th century, these intricate geometric patterns come from their remote island namesake, knitters having been deeply influenced by their Norse heritage. Over time, Fair Isle evolved from practical knitting using yarn attractively and economically, to one of Scotland's most iconic textile traditions. Each Croftmore throw captures the essence of Fair Isle, giving it a modern twist in a beautiful palette of colours.



# Clova



## *The Clova Collection*

Our largest throw and the perfect addition to a comfortable bedroom or inviting living space. Woven to sit perfectly on a king size bed, over a larger armchair or sofa. Clova's scale, along with its beautiful merino lambswool drape and subtle hint of detail in the design, makes this collection one of Remony's most elegant. Inspired by the remote, rolling hills of Glen Clova in Angus, abundant in majestic deer and soaring eagles.



THR849/001  
Snowcap



THR849/002  
Moss



THR849/003  
Stone



THR849/004  
Silver



THR849/005  
Vicuna

100% merino lambswool ~ 140cm x 240cm, including purled fringe





Lindorés





THR747/002  
Caramel



THR747/003  
Pumpkin



THR747/004  
Mushroom



THR747/005  
Grape



THR747/006  
Cornflower



THR747/007  
Slate



# Patchwork



THR831/007  
Coastline



THR831/001  
Sunshine



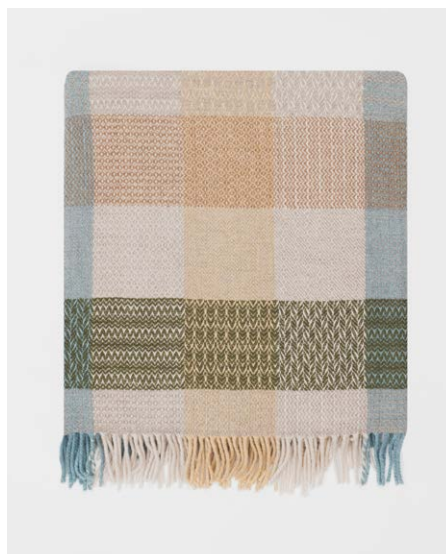
THR831/002  
Sea Breeze



THR831/003  
Croft



THR831/004  
Pasture



THR831/005  
Hayloft



THR831/006  
Moonlight





# Stoles

Potarch, Aberdeenshire

# Stoles



THR880/001/SPT  
Lunan Shore



THR880/003/SPT  
Lunan Sands



THR880/002/SPT  
Lunan Bay



THR881/004/SPT  
Lindores Mushroom





THR881/006/SPT  
Lindores Cornflower



THR879/001/SPT  
Dunira Natural



THR879/003/SPT  
Dunira Sorbet



THR879/005/SPT  
Pitnacree Sea Blue



THR881/007/SPT  
Lindores Slate



THR879/002/SPT  
Dunira Topaz



THR879/004/SPT  
Pitnacree Stone



THR879/006/SPT  
Pitnacree Rose



# Scarves

Loch Laggan, Badenoch

**MAC.N**  
BY MACNAUGHTON



## Hoy



TS909/007  
Mushroom

## Canisbay



TS909/001  
Silver

## Inchfad



TS909/004  
Silver

## Dual



TS908/001  
Charcoal/Grey



TS909/008  
Charcoal



TS909/002  
White



TS909/005  
Navy



TS908/002  
Silver/Camel



TS909/009  
Denim



TS909/003  
Navy



TS909/006  
White



TS908/003  
Navy/Denim

## Plain



TS876/401  
Camel



TS876/402  
Coal



TS876/403  
Navy



TS876/404  
Wine



TS876/405  
Cobalt



Tartans | Auðora | Skara Brae



WWS795/101  
Tartans Black Watch



WWS795/001  
Aurora Cerise



TS876/005  
Aurora Wine



WWS795/203  
Skara Brae Ruby



TS876/104  
Tartans Admiral Navy



WWS795/003  
Aurora Classic



WWS795/201  
Skara Brae Rose Quartz



WWS795/204  
Skara Brae Sapphire



TS876/105  
Tartans Uniform Grey



WWS795/004  
Aurora Mustard



WWS795/202  
Skara Brae Blue Stone



WWS795/205  
Skara Brae Opal

## Ströma



TS876/301  
Wine



TS876/302  
Grey



TS876/303  
Navy



TS876/304  
White



TS876/305  
Camel

---

100% merino lambswool ~ 30cm x 200cm, including purled fringe

## Roti & Bazaar



WWS778/101  
Roti Rogue



WWS778/102  
Roti Jean



WWS778/103  
Roti Betsy



WWS778/002  
Bazaar Starfire



WWS778/003  
Bazaar Lantern



WWS778/004  
Bazaar Storm

---

90% merino lambswool / 10% cashmere ~ 30cm x 200cm, including purled fringe





Lunan Bay, Angus

## *Make it Your Own*

All Remony throws can be labelled with your own branding including sewn labels and swing tickets.

Our talented team of designers can also work with you to create a bespoke throw or scarf design. From storytelling tartans to intricate jacquard patterns.

To discuss creating your very own design, to become a Remony customer or to place an order, please contact [sales@islemill.com](mailto:sales@islemill.com)



## Remony HQ

Macnaughton Holdings Ltd  
Tower House  
Inveralmond Industrial Estate  
Ruthvenfield Road  
Perth  
PH1 3UN

[sales@islemill.com](mailto:sales@islemill.com) | 01738 609 090

[www.remony.scot](http://www.remony.scot)  
[@remonythrows](#)

MACNAUGHTON  
**ISLE MILL**  
SCOTLAND