





THE ARAN COLLECTION



TWEED NEP BRORA LADIES JACKET



Hello from SCOTLAND!

I'm so delighted to share Chapter Two: Autumn Winter 2026 - a fresh new era for ERIBÉ. After nearly forty years designing knitwear, this collection feels especially meaningful. We've taken a thoughtful look at everything we do, listening closely to your feedback and drawing on the latest trends to refine, refresh, and realign our designs with what your customers truly love.

Chapter Two celebrates the ERIBÉ signature - modern Scottish knitwear that blends craftsmanship, comfort, and joyful colour. Expect timeless shapes, refined details, and colourways inspired by our Highlands landscape - heather, moss, and sky - chosen to bring warmth and happiness wherever they're displayed or worn.

To our wonderful stockists around the world - from bustling cities to quiet coastal shops - thank you for being part of our journey. Your enthusiasm inspires us daily, and this new collection is designed to support your continued success.

I hope you'll feel the same spark of excitement and optimism that we do. Here's to a cosy, colourful, and prosperous season ahead.

Warmly,

A handwritten signature in dark ink, reading "Rosemary Eibé". The script is fluid and cursive, with a large, stylized 'R' and 'E'.

Founder & Creative Director
ERIBÉ Knitwear





WESTRAY VEST / ERICA



STOBO GRAFFITI SWEATER / BIRLIE



WESTRAY SWEATER / FERRIS



TWEED NEP BRORA LADIES JACKETS



ALPINE SHORT SWEATER / HAZEL



MONTROSE TOP / MUSHROOM



ALPINE SHORT CARDIGAN / EBONY



ALLOA ACCESSORIES / BRAEMAR-OAKLEY



ALPINE CLASSIC CARDIGAN / OAKLEY



STONEYBREK SWEATER / SANDSTORM



KINROSS SWEATER / LATTE



VAILA LACE SWEATER / OATMEAL



SOLWAY LACE SWEATER / OATMEAL



ARAN CARDIGAN / OATMEAL



WESTRAY SWEATER / ROSLYN



CORRY HOODY / LINEN



BRORA LADIES JACKET / SAND



STOBO GRAFFITI SWEATER / DAPPER



KINROSS COLLECTION / MELISSA

ERIBÉ

11



WESTRAY SWEATER / GLENCOE



WESTRAY BLOCK SWEATER / MACDUFF



MONTROSE TOP / SAGE



CORRY RAGLAN / ORCHARD



STONEYBREK SWEATER / HIGHLAND



ALPINE ROLL COLLAR SWEATER / ROMANCE



NORWICK LACE SWEATER / PANSY



WESTRAY SWEATER / BALMORAL



TWEED NEP SWEATER / PANSY



CORRY HOODY / STARBURST



KINROSS CREW NECK VEST / SEA-HOLLY



SOLWAY LACE CARDIGAN / SARI



STOBO GRAFFITI SWEATER / CRACKIN



CORRY RAGLAN / MONTEGO BAY



ARAN CARDIGAN / SARI



SOLWAY LACE SWEATER / PUNK



ALPINE SHORT CARDIGAN / SALSA



FAIRISLE NECKERCHIEF / SALSA-TANGO



TREELINE WRAP / STARBURST



CORRY RAGLAN / HONESTY





KINROSS CREW NECK VEST / FLAME



VAILA LACE CARDIGAN / ELECTRIC RED



STOBO GRAFFITI BUCKET HAT / CRACKIN



MELROSE TWEED CARDIGAN / FRASER



CORRY RAGLAN / INFERNO



STOBO GRAFFITI SWEATER / COORIE



ALPINE CARDIGAN CLASSIC / AMELIA



THE ARAN COLLECTION



STOBO GRAFFITI SWEATER / BRAW



CORRY RAGLAN SWEATER / LUSCIOUS LIME



ARAN CARDIGAN / PUNCH



SOLWAY LACE CARDIGAN / SOFT DENIM



ARAN CARDIGAN / SOFT DENIM



ALPINE HOODY / CHARM



ALPINE ROLL COLLAR SWEATER / GRACE



KINROSS CREW NECK VEST / CHAKRA



STONEBREK SWEATER / CHARM



TWEED NEP SWEATER / DELPHINIUM



STONEYBREK SWEATER / GRACE



TWEED NEP SWEATER / THUNDER



WESTRAY SWEATER / FERRIS



BRORA LADIES JACKET / THUNDER



BRORA LADIES JACKET / BARK



KINROSS CREW NECK VEST / PRELUDE



ALPINE ROLL COLLAR SWEATER / BLUE MORNING
ALPINE SHORT CARDIGAN / GRACE



STONEBREK SWEATER / VELVET-WOODS



KINROSS CREW NECK VEST / SAPPHIRE



MELROSE TWEED DRAPE TOP / MUIR



ALPINE SHORT SWEATER / THISTLE

ERIBÉ

31



OUR YARNS

ERIBÉ is all about the people involved; from our wonderful in-house team, wool producers, spinners, mills and suppliers, to our agents, buyers and customers. We place great importance on every person involved in our supply chain, ensuring the highest standards of ethical production throughout.

All our woollen yarns are:

Ethically sourced from leading producers who handle the fibre with passion and care at every stage of the process.

Mulesing free, protecting animal welfare and preventing “fly strike” through humane methods.

Dyed according to EU REACH and OEKO-TEX® regulations, ensuring safety for people and the environment.

Majority are certified to RWS (Responsible Wool Standard) and Control Union standards.



KIND TO
ANIMALS



ENVIRONMENTAL
& SUSTAINABLE



QUALITY
ASSURED



ALWAYS
TRACEABLE



SOCIALLY
RESPONSIBLE



NON-MULESED
WOOL



MERINO LAMBSWOOL

The Merino Lambswool we use for our ALPINE, STOBO, CORRY, MONTROSE and STONEYBREK styles is spun in Yorkshire by a family-owned company who have been spinning yarn for over 200 years. The fibre is dyed before it is spun, a gentle process that gives a superior colour result and beautifully soft handle. They source natural fibres that meet the highest standards of animal welfare and take sustainability seriously. Their Yorkshire mill uses energy-efficient technology to reduce power consumption, and all wood, paper, plastic, metal and fibre waste is fully recycled.

SUPERFINE LAMBSWOOL & EXTRAFINE MERINO

KINROSS garments along with our new SOLWAY LACE and ARAN CABLE styles, are made using a premium, Scottish-spun, fully traceable, and guaranteed non-mulesed RWS Certified superfine Lambswool. This yarn is soft, lightweight, and sustainably produced. The spinner uses water drawn from nearby Loch Leven. The dyes used are environmentally friendly, and after dyeing, the water is thoroughly cleaned and returned to the loch – a protected nature reserve for birds and fish. MELROSE garments are crafted from a luxurious extrafine Merino, offering an even softer and lighter finish. This yarn is sourced from exceptionally fine Merino wool for comfortable wear in all weather conditions. It is also Responsible Wool Standard Certified, fully traceable and ethically produced.



SOFT SHETLAND

The Responsible Wool Standard (RWS) aims to improve the welfare of sheep and the land they graze on. It requires certification for all sites along the supply chain, from wool farmers to the final business-to-business seller. RWS farmers must meet strict standards for animal welfare, land management, and social responsibility.

Our Soft Shetland wool is spun in Yorkshire using New Zealand wools sourced from suppliers who uphold the highest animal welfare practices in the farming of their sheep, ensuring they are mulesing-free. All dyes and chemicals used in the manufacturing process comply with the latest EU REACH and OEKO-TEX® regulations.



LUXURY SOFT YARNS

Our mohair is sourced responsibly through partners who ensure ethical and sustainable farming practices, with full traceability and high standards of animal welfare. The angora used in our classic Alpines is ethically sourced and of the very best quality.

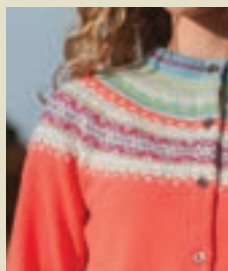


KINROSS CREW NECK VEST / LODEN

CHAPTER TWO : AW 2026/27



WHAT'S NEW
Page 36



The ALPINE
Page 38



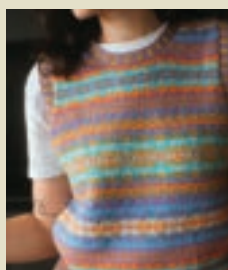
The MONTROSE
Page 48



The STONEYBREK
Page 54



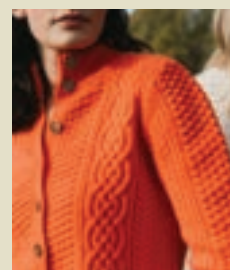
The WESTRAY
Page 56



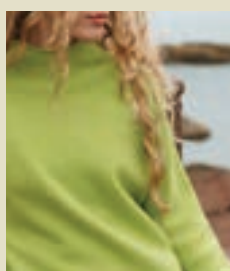
The KINROSS
Page 62



The STOBO
Page 68



The ARAN
Page 72



The CORRY
Page 74



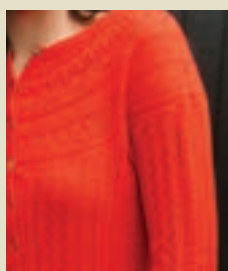
The SOLWAY LACE
Page 80



The MELROSE TWEED
Page 84



The TWEED NEP
Page 88



The VAILA LACE
Page 94



The ACCESSORIES
Page 98



NEW: THE ARAN COLLECTION



NEW: THE MELROSE TWEED DRAPE TOP



NEW: THE NORWICK LACE



NEW: THE SOLWAY LACE COLLECTION



NEW: BRORA LADIES JACKET



NEW: THE STOBO GRAFFITI SWEATER



NEW: THE KINROSS COWL SWEATER



NEW: THE MONTROSE TOP



NEW: THE KINROSS CREW NECK VEST



The ALPINE

Our Iconic ERIBÉ Collection.

The Alpine is a stylish, colourful, cosy knit, rich in Scottish history offering a modern vibrant approach in its colours. An eye-catching addition to your store's interior layout. Customers love the comfort and luxury of the fine micron, woollen spun Merino yarn, the meticulous attention to detail, unique number of colours and construction of the beautiful Fairisle yoke. The design inspiration for this collection comes from late 18th century handknit found in the very North of Scotland. The design is technically complex requiring high levels of hand skills.





ALPINE SWEATER *Classic*

STYLE NO: P3974

96% Merino Lambswool 4% Angora / 7gg

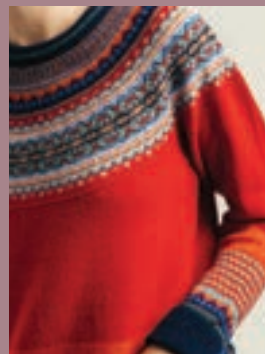
MADE IN EU

SIZES: XS / S / M / L / XL / XXL

REGULAR FIT

A Fairisle patterned yoke sweater featuring double patterned detail on the hem and cuffs, finished with a touch of luxurious Angora in the yoke for added indulgence and a soft, textured feel. Designed with an extra-long cuff to keep hands warm and a gently shaped waist for a flattering fit.

AVAILABLE IN 16 COLOURS WITH COMPLEMENTARY ACCESSORIES



ALPINE CARDIGAN *Classic*

STYLE NO: C3735

96% Merino Lambswool 4% Angora / 7gg

MADE IN EU

SIZES: XS / S / M / L / XL / XXL

SLIM FIT

A Fairisle yoke cardigan with shell buttons, featuring patterned detail on the hem and cuffs, finished with a touch of luxurious angora in the yoke for added indulgence and a soft texture. Designed with an extra-long cuff to keep hands warm, and a gently shaped waist for a flattering fit.

AVAILABLE IN 16 COLOURS WITH MATCHING ACCESSORIES





ALPINE SHORT SWEATER

STYLE NO: P4250

100% Merino Lambswool from Yorkshire / 7gg

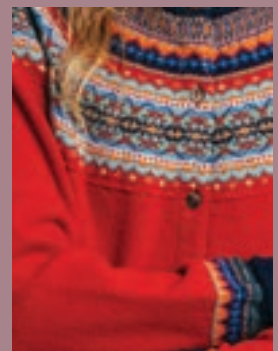
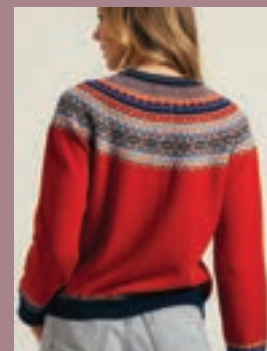
MADE IN EU

SIZES: XS / S / M / L / XL / XXL

SLIM FIT

The short sweater features Fairisle pattern detailing on the shoulders and cuffs, with a hip-length cut and long cuffs for added warmth. Designed to sit with high-waisted trousers, skirts, and dresses, it offers a flattering fit for a shorter body length.

AVAILABLE IN 16 COLOURS WITH MATCHING ACCESSORIES



ALPINE SHORT CARDIGAN

STYLE NO: C4249

100% Merino Lambswool from Yorkshire / 7gg

MADE IN EU

SIZES: XS / S / M / L / XL / XXL

SLIM FIT

The short cardigan features Fairisle pattern detailing on the shoulders and cuffs, with a hip-length cut, long cuff and shell buttons. Designed to sit with high-waisted trousers, skirts and dresses, it offers a flattering fit for a shorter body length.

AVAILABLE IN 16 COLOURS WITH MATCHING ACCESSORIES

The ALPINE Colours



Sage



Braemar



Grace



Thistle



Lugano



Cherry



Tyrian



Ebony

CLASSIC SWEATER / CLASSIC CARDIGAN
SHORT SWEATER / SHORT CARDIGAN



Taurus



Amelia*



Romance



Charm*



Salsa



Oakley



Blue Morning



Hazel

* This colourway is limited run due to the unique nature of this yarn. Order early to avoid disappointment.



ALPINE ROLL COLLAR SWEATER

STYLE NO: P4128

96% Merino Lambswool 4% Angora / 7gg

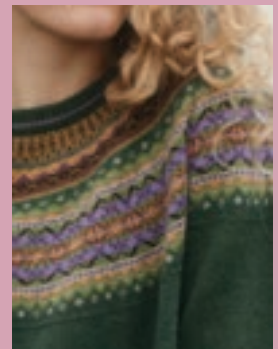
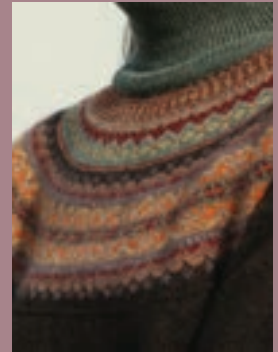
MADE IN EU

SIZES: XS / S / M / L / XL / XXL

REGULAR FIT

A regular-fit roll-neck sweater with a slightly shaped waist for a flattering silhouette. Features Fairisle and tweed patterning around the shoulders, above the cuffs and along the hem. Designed with extra-long cuffs to keep hands warm.

AVAILABLE IN 6 COLOURS WITH MATCHING ACCESSORIES.



ALPINE BREEZE SWEATER

STYLE NO: P4226

100% Merino Lambswool / 7gg

MADE IN EU

SIZES: SHORT (S-L) LENGTH: 63CM TALL (M-XXL) LENGTH: 70CM

RELAXED FIT

Our classic Fairisle yoke pullover is simplified and reimagined in a looser shape for a relaxed fit, featuring firmer, thicker and more defined ribs. Available in two sizes, designed according to height. The Fairisle pattern appears only on the shoulders, with the rib cuffs and hem in the main colour.

AVAILABLE IN 8 COLOURS WITH MATCHING ACCESSORIES.

The ALPINE Colours

ROLL COLLAR SWEATER



Taurus



Grace



Blue Morning



Tyrian



Lugano



Oakley

BREEZE SWEATER



Grace



Charm*



Taurus



Tyrian



Thistle



Lugano



Blue Morning



Sage

* This colourway is limited run due to the unique nature of this yarn. Order early to avoid disappointment.

The ALPINE Colours

ALPINE HOODY



Taurus



Grace



Charm*



Amelia*



Lugano



Oakley

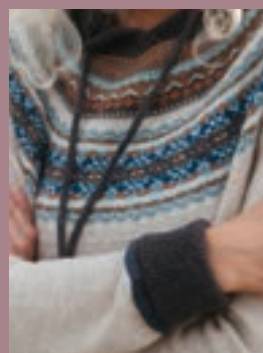


Ebony



Tyrian

* This colourway is limited run due to the unique nature of this yarn. Order early to avoid disappointment.



ALPINE HOODY

STYLE NO: P4255

100% Merino Lambswool / 7gg

MADE IN EU

SIZES: XS / S / M / L / XL / XXL

REGULAR FIT

A refreshingly sporty take on our Fairisle classic, featuring with extra-long cuffs, a hood and knitted ties. The Fairisle and tweed pattern appears around the shoulders only. No pockets.

AVAILABLE IN 8 COLOURS WITH
MATCHING ACCESSORIES.



MONTROSE COWL NECK SWEATER / SAGE

The MONTROSE

Three relaxed-fit knits in eye-catching designs and solid colours, easy to wear and featuring unique vertical pattern details such as Guernsey rib, tweed textures and the special 'Milkchurn' Fairisle pattern. Made from 100%

Merino lambswool, this knitting technique creates a flattering drape, offering both comfort and individuality in the Blanket Coat, Cowl Neck Sweater and featuring the new top style.





MONTROSE BLANKET COAT

STYLE NO: C4141

100% Merino Lambswool / 7gg

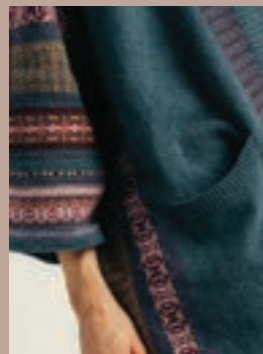
MADE IN EU

ONE SIZE (CHEST: 80CM, LENGTH: 77CM)

OVERSIZED FIT

A versatile mid-thigh length garment that can be worn as a coat, jacket or throw-on, featuring practical deep pockets. Turn it upside down for extra warmth around the shoulders or wear it elegantly as a shrug over a dress. This piece can be styled like a blanket, making it ideal for temperature-changing moments, a wonderful live-in garment for all occasions.

AVAILABLE IN 6 COLOURS.



MONTROSE COWL NECK SWEATER

STYLE NO: P4332

100% Merino Lambswool / 7gg

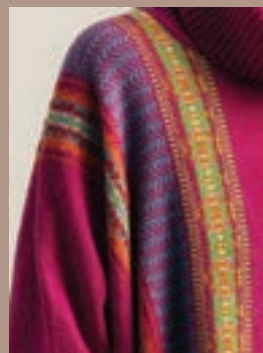
MADE IN EU

ONE SIZE (WIDTH: 88CM, FRONT BODY LENGTH: 65CM)

OVERSIZED FIT

Providing effortless elegance and comfort for all body shapes, this versatile mid-thigh length throw-over sweater features a loose yet cosy cowl neck and a flattering draped design. A beautiful mix of Fairisle, tweed and tasteful colour-block patterns compliments every skin tone. Styled like a blanket, it's perfect for temperature-changing moments – a wonderful live-in piece for all occasions.

AVAILABLE IN 6 COLOURS.



The MONTROSE Colours

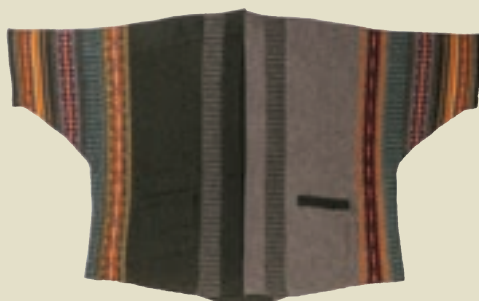
BLANKET COAT / COWL NECK SWEATER / TOP



Mushroom



Starburst



Bracken



Hunter



Sage



Hermes



MONTROSE TOP

STYLE NO: P4397

100% Merino Lambswool / 7gg

MADE IN EU

SIZES: SHORT (FRONT BODY LENGTH: 52.5cm)

TALL (FRONT BODY LENGTH: 58cm)

OVERSIZED FIT

A must-have garment that you can throw on for effortless comfort and style. This versatile hip-length top features a loose, flattering draped shape and short sleeves with subtle Fairisle and tweed pattern details. It offers lightweight warmth and a universally flattering fit. Available in two sizes, designed according to height.

AVAILABLE IN 6 COLOURS.



MONTROSE BLANKET COAT / SAGE

The STONEYBREK

The Stoneybrek sweater combines the comfort and warmth of beautifully soft Merino lambswool with signature ERIBÉ styling to create a year-round staple you'll turn to time and time again. Featuring a flattering circular Fairisle yoke and a chunky hand-knit appearance, the Stoneybrek is ideal for outdoor activities or relaxing at home.

Made in the EU.





STONEYBREK SWEATER

STYLE NO: P3987

SIZES 100% Merino Lambswool / 5gg

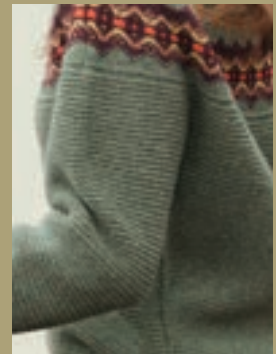
MADE IN EU

SIZES: XS / S / M / L / XL / XXL

RELAXED FIT

A round-neck sweater featuring a distinctive graphic yoke for a hand-knitted look. Warm, comfortable and effortless.

AVAILABLE IN 6 COLOURS.



The STONEYBREK Colours



Cornflower



Sandstorm



Charm*



Grace



Velvet Woods

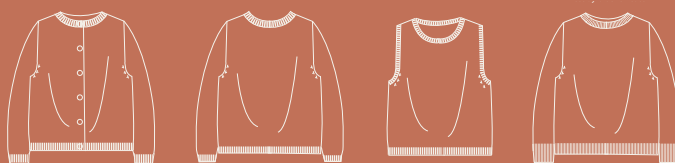


Highland

* This colourway is limited run due to the unique nature of this yarn. Order early to avoid disappointment.

The WESTRAY

A true heritage icon without the heavy weight and scratchy handle. The colours and patterns are blended to reflect Scotland's natural beauty. Inspired by traditional Fairisle designs and handknit techniques from Shetland, in the far northeast of Scotland. Crafted from a modern version of Shetland wool, it offers a contemporary Scottish look and feel. The soft wool naturally moulds to your body over time — or size up if you prefer a looser fit. These authentic Scottish garments are made in Scotland in our own factory.





WESTRAY CARDIGAN

STYLE NO: C4199

100% Soft Shetland Wool / 5gg

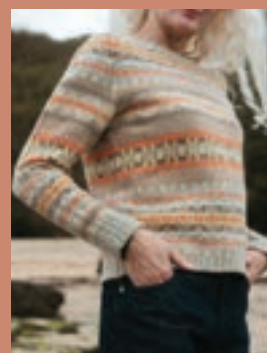
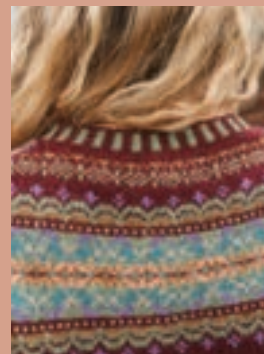
MADE IN SCOTLAND

SIZES: XS / S / M / L / XL

REGULAR FIT

An over-hip length Fairisle cardigan with horn buttons and traditional striped pattern detailing on the hem and cuffs. Knitted in 100% soft Shetland wool, it offers warmth, comfort, and timeless style.

AVAILABLE IN 10 COLOURS.



WESTRAY SWEATER

STYLE NO: P4202

100% Soft Shetland Wool / 5gg

MADE IN SCOTLAND

SIZES: XS / S / M / L / XL

REGULAR FIT

An over-hip length Fairisle sweater featuring traditional striped accents on the hem and cuffs. Knitted in 100% soft Shetland wool for a comfortable, timeless finish.

AVAILABLE IN 10 COLOURS.

The WESTRAY Colours

SWEATER / CARDIGAN / VEST



Mallaig



Roslyn



Glencoe



Erica



Huntley



Balmoral



Ferris



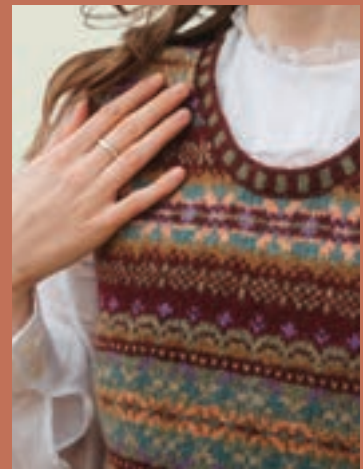
MacDuff



Caithness



Aberfoyle



WESTRAY VEST

STYLE NO: V4247

100% Soft Shetland Wool / 5gg

MADE IN SCOTLAND

SIZES: XS / S / M / L / XL

REGULAR FIT

A Fairisle vest with scoop round neck and straight silhouette, featuring traditional striped detailing on the hem and armholes. Knitted in soft Shetland wool for a comfortable classic finish.

AVAILABLE IN 10 COLOURS.



WESTRAY BLOCK SWEATER

STYLE NO: P4331

100% Soft Shetland Wool / 5gg

MADE IN SCOTLAND

SIZES: S / M / L / XL

RELAXED FIT

A modern colour-block interpretation of our Westray Sweater, presented in a contemporary boxy cut. The collar, cuffs, sleeves and back panel feature block colours taken from the front Fairisle pattern. Knitted in 100% soft shetland wool for warmth, comfort and a timeless style.

AVAILABLE IN 5 COLOURS



The WESTRAY Colours

BLOCK SWEATER



Mallaig



Glencoe



Aberfoyle



Balmoral



MacDuff



WESTRAY CARDIGAN / HUNTLEY

The KINROSS

Inspired by the natural beauty of our Scottish landscape and traditional patterns from Shetland and Fair Isle. Kinross garments are lovingly crafted from premium ultra-soft superfine lambswool that feels like cashmere — soft, lightweight and luxurious. Kinross styles combine traditional techniques with signature ERIBÉ colouring, creating contemporary statement pieces that stand out from the crowd.

The land and animals are ethically cared for, with regular farm visits to support the farmers. This wool is RWS certified, meaning your customers can trust it comes from ethical, sustainable practices that prioritise fair trade, animal welfare, and land stewardship. The RWS trademark recognises the most responsible and reliable farmers worldwide.

Made in the EU with Scottish-spun yarn, fully traceable, guaranteed non-mulesed and crafted from 100% Superfine Lambswool.





KINROSS SWEATER

STYLE NO: P4218

100% Superfine Lambswool / 5gg

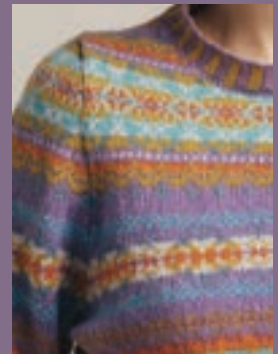
MADE IN EU

SIZES: S / M / L / XL / XXL

REGULAR FIT

An ultra-soft, colourful Fairisle sweater crafted from premium, superfine lambswool. Features distinctive striped trims and graphic motifs inspired by traditional hand-knitted Shetland Fairisles. Authentic floats on the inside of the garment provide an extra layer of warmth.

AVAILABLE IN 10 COLOURS.



KINROSS CARDIGAN

STYLE NO: C4302

100% Superfine Lambswool / 5gg

MADE IN EU

SIZES: S / M / L / XL / XXL

REGULAR FIT

Cardigan version of our ultra soft Fairisle Kinross Sweater, finished with horn buttons and traditional striped pattern detail on the hem and cuffs.

AVAILABLE IN 10 COLOURS.

The KINROSS Colours

SWEATER / CARDIGAN / VEST



Blush



Flame



Melissa



Chakra



Latte



Pistachio



Sea-holly



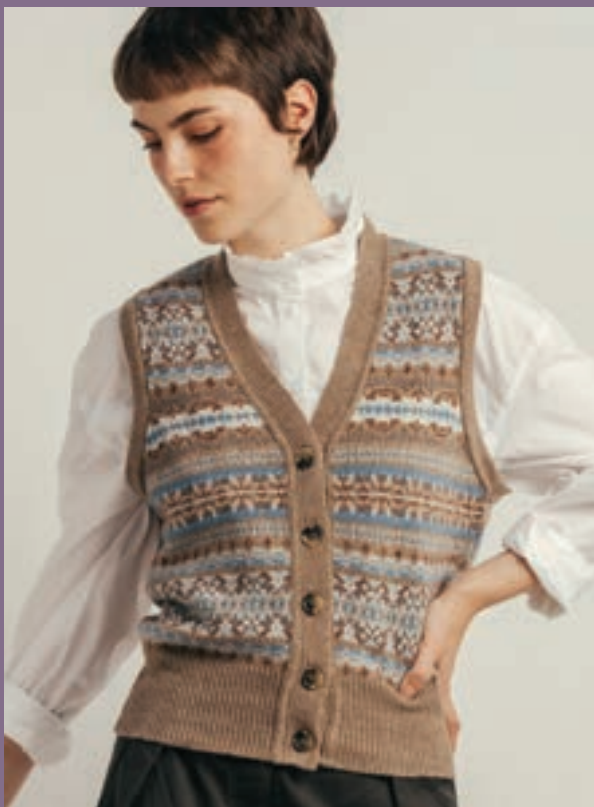
Sapphire



Loden



Prelude



KINROSS WAISTCOAT

STYLE NO: V4318

100% Superfine Lambswool / 5gg

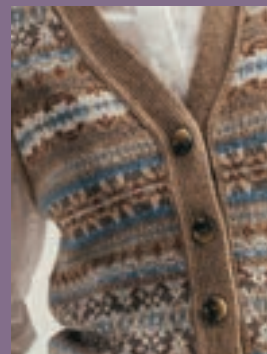
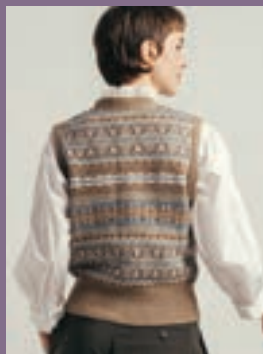
MADE IN EU

SIZES: XS / S / M / L / XL

SLIM FIT

A vintage-inspired slim fit, V-neck waistcoat that offers a stylish, flattering silhouette, with a long rib hem that gently hugs the hips. Soft as cashmere, yet slightly thicker than the Corry collection for extra warmth and structure.

AVAILABLE IN 10 COLOURS.



KINROSS CREW NECK VEST

STYLE NO: V4420

100% Superfine Lambswool / 5gg

MADE IN EU

SIZES: XS/S, S/M, M/L, L/XL, XL/XXL

UNISEX

Our new soft luxury vest, designed for both women and men, is tasteful and contemporary, inspired by our Scottish heritage. A true head-turner, it offers comfort and gentle warmth throughout the day and effortless style into the evening.

AVAILABLE IN 10 COLOURS.

The KINROSS Colours

WAISTCOAT



Blush



Flame



Melissa



Chakra



Latte



Pistachio



Sea-holly



Sapphire



Loden



Prelude



KINROSS COWL NECK SWEATER

STYLE NO: P4404

100% Superfine Lambswool / 7/5gg

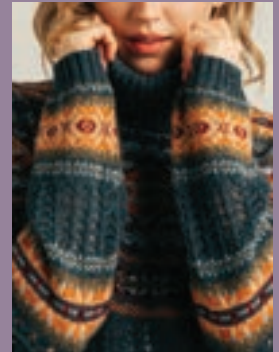
MADE IN EU

SIZES: S / M / L / XL / XXL

REGULAR FIT

Soft as cashmere, this new Fairisle and lace combination brings elegance, comfort and a touch of romance and glamour. This sweater gently moulds to your body shape, making it an instant favourite.

AVAILABLE IN 4 COLOURS.



The KINROSS Colours

COWL NECK SWEATER



Melissa



Blush



Chakra



Prelude

The STOBO

There is a bright, infectious joy in our new Stobo garments. Combining Fairisle, stripes and unique colour combinations, they bring an uplifting, stylish feel to your look and a skip in your step! Named after a very beautiful and colourful area in the Scottish Borders, Stobo garments feature striped and Fairisle patterns with a bold contrast colour-block stripe rib cuff.

Cleverly designed, they can be worn front to back or back to front, allowing you to choose colours or patterns to suit your mood or outfit. Made from soft 100% Merino Lambswool, spun in Yorkshire in the North of England. Available in 5 fun and versatile colourways.





STOBO STRIPE SWEATER *Reversible*

STYLE NO: P4313

100% Merino Lambswool / 7gg

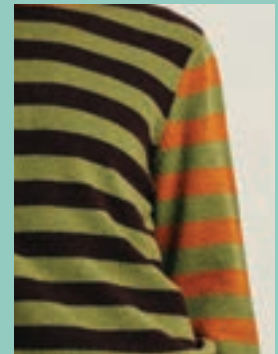
MADE IN EU

SIZES: S / M / L / XL

REGULAR FIT

A striped, geometric design that captures the fun and stylish essence of ERIBÉ's signature colour combinations. The Stripe Sweater is two garments in one, offering a choice of colourful stripe combinations that can be worn to the front. It features a round neck shaped for comfort and distinctive contrasting rib cuffs that add a touch of flair.

AVAILABLE IN 5 COLOURS



STOBO GRAFFITI SWEATER *Reversible*

STYLE NO: P4383

100% Merino Lambswool / 7gg

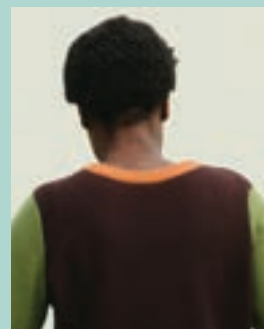
MADE IN EU

SIZES: S / M / L / XL

REGULAR FIT

Where heritage meets daring design, this Fairisle pattern and bold play of colour take inspiration from contemporary graffiti art. Designed for versatility, it can be worn with the pattern at the front or back, depending on your mood. Each colourway named is after a Scottish word, and the round neck is shaped for comfort whichever way you choose to wear it, letting you showcase your favourite colours every day.

AVAILABLE IN 5 COLOURS



The STOBO Colours

STRIPE SWEATER



Dapper



Braw



Crackin



Birlie



Coorie

GRAFFITI SWEATER



Dapper



Braw



Crackin



Birlie



Coorie



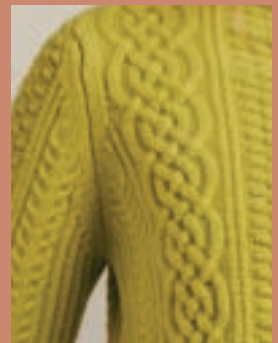
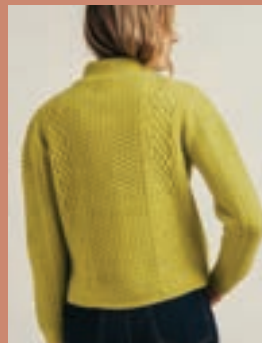
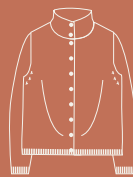
STOBO GRAFFITI SWEATER / BRAW

ERIBÉ

71

The ARAN

An old favourite inspired by our own handknit archive. After 40 years of knitwear design we have such a wonderful array of designs in our own archive to take style and technique influence from. This unique all-over cable pattern has been re-imagined. Each piece takes hours to knit and is crafted from top quality superfine lambswool. To celebrate 40 years of ERIBÉ joy, it is offered in a range of stunning colours that will brighten up any wardrobe.



ARAN CARDIGAN

STYLE NO: C4409

100% Superfine Lambswool / 5gg

MADE IN EU

SIZES: S / M / L / XL

SLIM FIT

Hip-length, super-soft, and cosy, this Aran high-neck cardigan is as versatile as it is luxurious. It can be worn as a heavier-weight outer layer or comfortably next to the skin as a classic cardigan. The high neck design provides extra warmth and a flattering silhouette, while the traditional Aran knit patterns add texture, character, and timeless style. Perfect for layering or wearing on its own.

AVAILABLE IN 6 COLOURS.

The ARAN Colours



Punk



Punch



Oatmeal



Sari



Soft Denim



Orange Gloss

The CORRY

Our Luxe-Leisure collection is crafted from the softest 100% Merino lambswool, spun in Yorkshire. Designed for comfort and versatility, these garments are perfect for wearing on any occasion. The collection also showcases ERIBÉ's vibrant colours without pattern, adding diversity to your store display.

With sustainability at its heart, these pieces are designed to replace cotton basics and encourage conscious wearing. Wool's breathable qualities can regulate body temperature and requires less frequent washing. The source material ensures sustainability, and a far lower environmental footprint than typical cotton alternatives.





CORRY LADIES RAGLAN SWEATER

STYLE NO: P4130

100% Merino Lambswool / 7gg

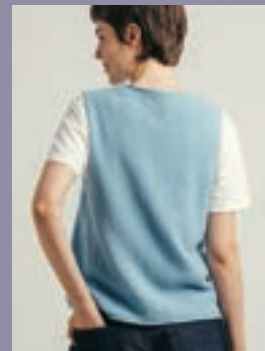
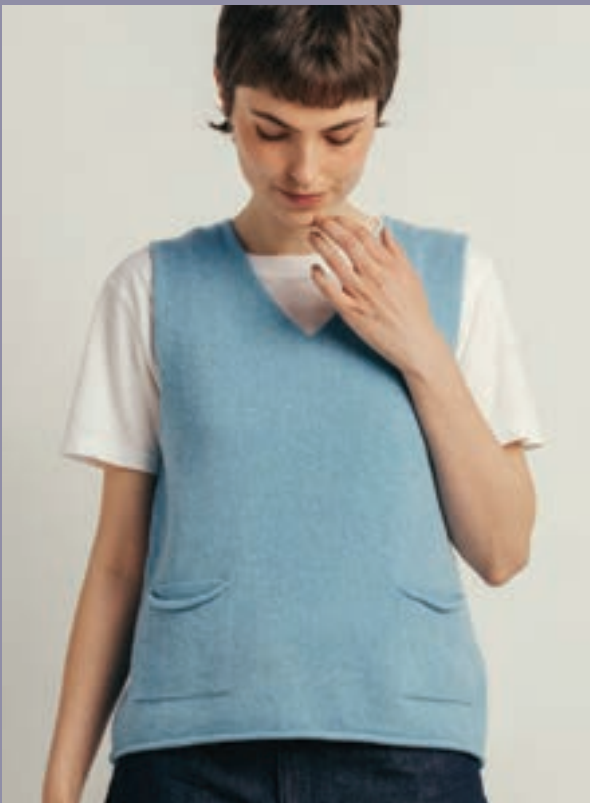
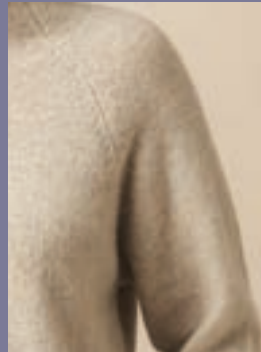
MADE IN SCOTLAND

SIZES: XS / S / M / L / XL / XXL

RELAXED FIT

This ERIBÉ classic shape is inspired by the artist's smock top. Designed in a comfortable raglan style, it features adjustable collar, and hems can be rolled inside or out and lengthened or shortened to suit your style. Side splits at the hem provide extra movement and ease, making this piece both versatile and effortlessly comfortable.

AVAILABLE IN 13 COLOURS.



CORRY V-NECK TANK TOP

STYLE NO: V4232

100% Merino Lambswool / 7gg

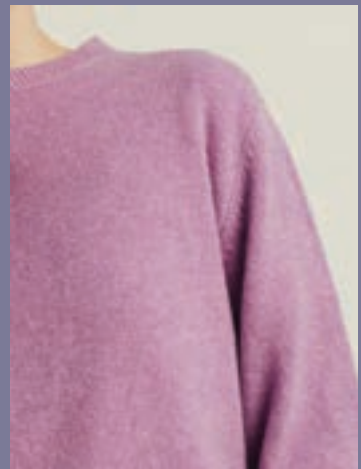
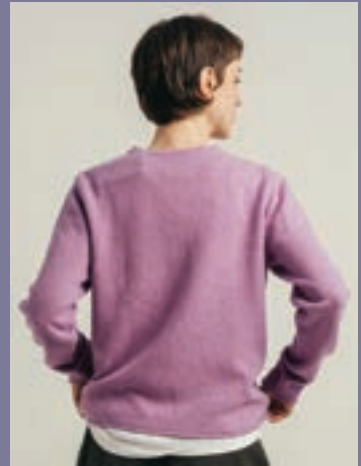
MADE IN SCOTLAND

SIZES: XS/S, S/M, M/L, L/XL, XL/XXL

SLIM FIT / RELAXED FIT

Minimalist and functional, this V-neck Tank top features two pockets and is perfect to layer over a dress, shirt, or t-shirt for added warmth and effortless style. The dual-size design allows you to choose between slim fit or regular fit, offering versatility for every wardrobe.

AVAILABLE IN 13 COLOURS.



CORRY T-SHIRT SWEATER

STYLE NO: P4271

100% Merino Lambswool / 7gg

MADE IN SCOTLAND

SIZES: XS / S / M / L / XL / XXL

RELAXED FIT

A fine woollen long sleeve t-shirt that is soft, comfortable and flattering. With a small rib collar and no trims on cuffs or hips for easy wear and a relaxed stylish look. This garment is unisex with a boyfriend fit. For womenswear this garment can be sized down from usual size.

AVAILABLE IN 13 COLOURS.

The CORRY Colours

RAGLAN SWEATER / V-NECK TANK TOP
T-SHIRT SWEATER



Starburst



Luscious Lime



Montego Bay



Linen



Honesty



Caspian



Orchard



Driftwood



Inferno



Jeans



Seaweed



Regatta



Metallic



CORRY HOODY SWEATER

STYLE NO: P4273

100% Merino Lambswool / 7gg

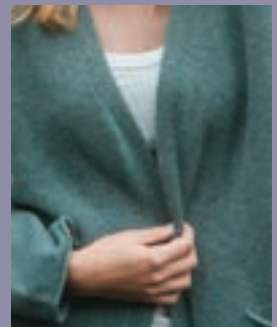
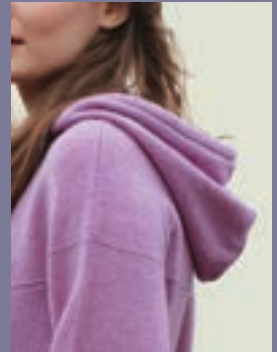
MADE IN EU

SIZES: XS/S / S/M / M/L / L/XL / XL/XXL / XXL

RELAXED FIT

This hoody is soft, flattering, and effortlessly stylish, featuring chunky knitted ties in a contrasting colour. Subtle shaping around the chest and shoulders with a rib-free finish makes it easy to wear. The perfect luxe loungewear for comfort, travel, and everyday style. Size up for a looser fit.

AVAILABLE IN 9 COLOURS.



CORRY LOFT CARDIGAN

STYLE NO: C4385

100% Merino Lambswool / 7gg

MADE IN SCOTLAND

SIZES: XS/S, M/L, XL/XXL

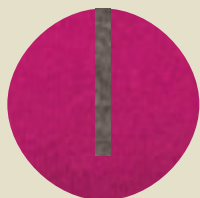
LOOSE FIT

A lightweight, over-the-knee length coat featuring practical extra-large pockets. The V-neck and front-edge ribs are seamlessly integrated, and all trims are kept simple for easy wear and a contemporary look. Side splits add freedom of movement for effortless layering. Pair with the matching Corry T-Shirt or V-neck tank for a modern twinset with a luxe-leisure vibe. Choose a smaller size for a shorter length.

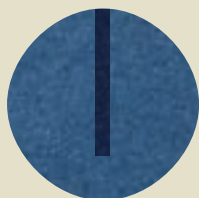
AVAILABLE IN 9 COLOURS.

The CORRY Colours

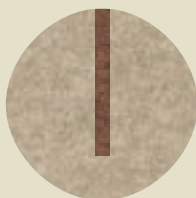
HOODY



Honesty (BASE) /
Grey Mix (CONTRAST)



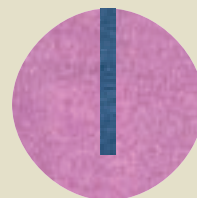
Jeans (BASE) /
Regatta (CONTRAST)



Linen (BASE) /
Tobacco (CONTRAST)



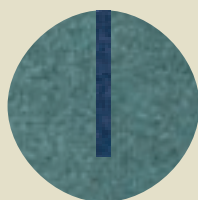
Montego Bay (BASE) /
Regalia (CONTRAST)



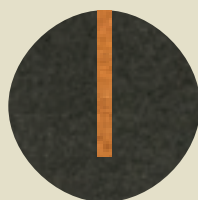
Starburst (BASE) /
Jeans (CONTRAST)



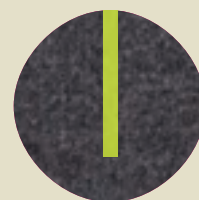
Regatta (BASE) /
Tobacco (CONTRAST)



Caspian (BASE) /
Rhapsody (CONTRAST)



Seaweed (BASE) /
Gazelle (CONTRAST)



Metallic (BASE) /
Luscious Lime (CONTRAST)

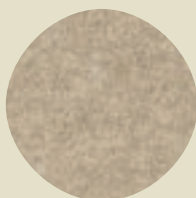
LOFT CARDIGAN



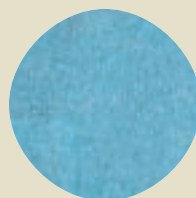
Honesty



Jeans



Linen



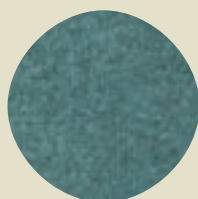
Montego Bay



Starburst



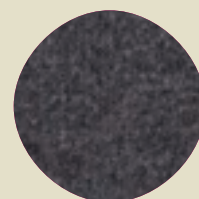
Regatta



Caspian



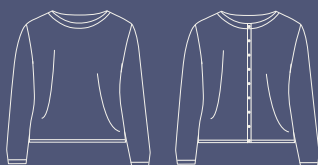
Seaweed



Metallic

The SOLWAY LACE

Taken from our 40-year knit archive, the Solway Lace combines romance with luxurious softness and warmth next to the skin. These slim-fitting designs create an elegant yet contemporary look, while the garments quickly mould to your body shape. Easy to care for, making them a practical and beautiful addition to any collection.





SOLWAY LACE CARDIGAN

STYLE NO: C4416

100% Superfine Lambswool / 5gg

MADE IN EU

SIZES: S / M / L / XL

SLIM FIT

A knitted lace cardigan combining romance with luxurious softness and warmth. Shell buttons and a slim-fitting design create an elegant yet contemporary look.

AVAILABLE IN 6 COLOURS.



SOLWAY LACE SWEATER

STYLE NO: P4417

100% Superfine Lambswool / 5gg

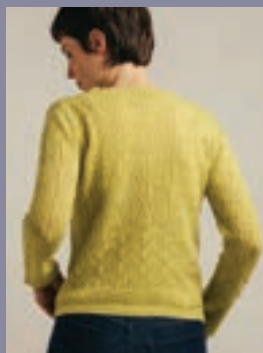
MADE IN EU

SIZES: S / M / L / XL

SLIM FIT

A knitted lace pullover combining romance with luxurious softness and warmth. Designed to be slim-fitting for a contemporary look.

AVAILABLE IN 6 COLOURS.



The SOLWAY LACE Colours

CARDIGAN / SWEATER



Pink



Punch



Oatmeal



Sari



Orange Gloss



Soft Denim



SOLWAY LACE SWEATER / OATMEAL
FAIRISLE NECKERCHIEF / HAZEL-GRACE

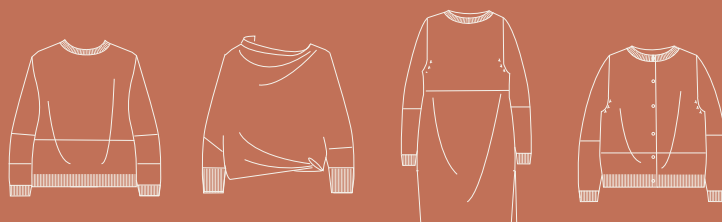
The MELROSE TWEED

Taking inspiration from the texture and colour-play of Scotland's rich ancestral cloth, 'Tweed', these new garments are a fun, colourful and super-soft collection with heritage roots.

Melrose is ERIBÉ's hometown in the Scottish Borders, a perfect historical Abbey-town surrounded by rolling countryside, a Roman fort and the Eildon hills.

The Tweed name of this collection holds double meaning – 'The Tweed' is one of Scotland's famous rivers that runs through Melrose. But also, we combined 'Scottish Tweed' cloth textures and colour play with our own colour blocking to create a garment that is stylish and directional while carrying complex heritage-inspired design and texture. The extrafine 100% Merino wool, knitted in this super-lightweight finish, makes these garments luxury pieces that are a pleasure to wear.

Designed in Scotland. Knitted in our super-soft, extrafine 100% Merino wool spun in Italy.





MELROSE TWEED SWEATER

STYLE NO: P4380

100% Extrafine Merino / 12gg

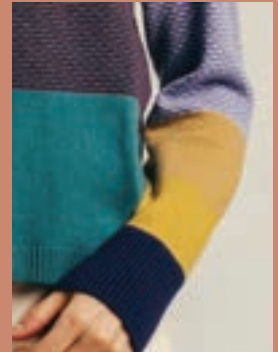
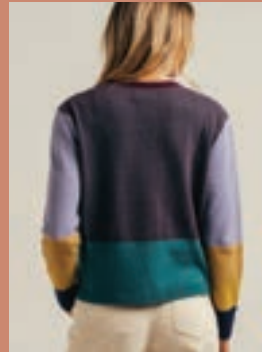
MADE IN EU

SIZES: S / M / L / XL / XXL

RELAXED FIT

A contemporary Scottish take on classic tweed patterns, enhanced with colour blocking for a relaxed, easy-to-wear shaped sweater. Knitted in a fine gauge, it feels luxuriously soft like cashmere. Heavier ribbed cuffs and hem add structure, quality and individuality.

AVAILABLE IN 4 COLOURS.



MELROSE TWEED CARDIGAN

STYLE NO: C4379

100% Extrafine Merino / 12gg

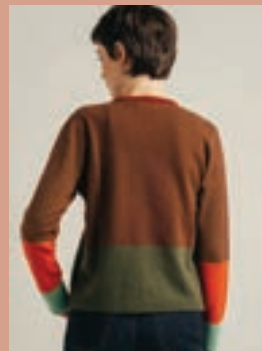
MADE IN EU

SIZES: S / M / L / XL / XXL

RELAXED FIT

A contemporary Scottish take on tweed patterns, enhanced with colour blocking for an easy to wear, regular fit cardigan. The button placket is lined with grosgrain ribbon for added durability and a refined finish. Knitted in a fine gauge, it feels luxuriously soft like cashmere. Heavier ribbed cuffs and hem add structure, quality and individuality.

AVAILABLE IN 4 COLOURS.





MELROSE TWEED TUNIC *Reversible*

STYLE NO: P4381

100% Extrafine Merino / 12gg

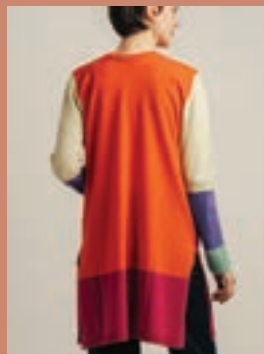
MADE IN EU

SIZES: S / M / L / XL / XXL

RELAXED FIT

A flattering, fine-gauge tunic dress that feels as soft as cashmere. The subtle Scottish tweed pattern, combined with modern colour blocking, creates a contemporary, easy-to-wear design that's also fully reversible. Heavier ribbed cuffs and hems add structure, quality and individuality.

AVAILABLE IN 4 COLOURS.



MELROSE TWEED DRAPE TOP *Reversible*

STYLE NO No: P4392

100% Extrafine Merino / 12gg

MADE IN EU

TWO HIP SIZES: XS/M (HIP:44CM), M/XXL (HIP:54CM)

LOOSE FIT

A versatile, multi-wear asymmetrical top with a flattering slash neckline which drapes across the chest and shoulders, designed for comfort and effortless style. This contemporary take on Scottish tweed patterns features modern colour blocking and is fully reversible. Knitted in fine-gauge Merino wool that feels luxuriously soft like cashmere and is finished with a heavier rib cuff for added quality and definition.

AVAILABLE IN 4 COLOURS.



The MELROSE TWEED Colours

SWEATER / CARDIGAN / TUNIC / DRAPE TOP



Musselburgh



Fraser



Muir



Dundee

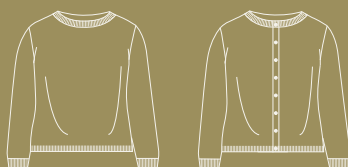
The TWEED NEP Collections

Knitted in our modern version of Shetland wool, these collections features an exclusive ERIBÉ yarn developed from a very old and favourite garment from our archive. The yarn blends multiple colours with a distinctive tweed nep, creating a colourful speckle that adds depth, texture and a beautifully “tweedy” character. Lighter in weight than traditional Donegal yarn yet similar in handle and appearance, it’s perfectly suited to today’s milder climate.

Designed in a simple, utility-inspired style, the garments feature playful contrasting trims on the pockets, ribs and neckline, highlighting the colours within the yarn itself. Garter-stitched shoulders and elbow patches add a crafted touch, while the colour palette draws inspiration from the rugged Scottish landscape, bringing a nostalgic, homespun warmth to the collections. Enjoy TWEED NEP, BRORA and NORWICK LACE in this special yarn.



Norwick Lace garments look and feel like a 1950’s hand-knitted original garment. Knitted in our exclusive fine, soft Shetland with multicoloured tweed neps.





TWEED NEP VEST

STYLE NO: V4353

100% Soft Shetland Wool with multi coloured flecks / 5gg

MADE IN SCOTLAND

SIZES: XS / S / M / L / XL / XXL

RELAXED FIT

A versatile sleeveless vest featuring textured shoulder detailing, practical front pockets, and contrast-colour rolled trims at the hem and pocket.

AVAILABLE IN 7 COLOURS.



TWEED NEP SWEATER

STYLE NO: P4354

100% Soft Shetland Wool with multi coloured flecks / 5gg

MADE IN SCOTLAND

SIZES: XS / S / M / L / XL / XXL

RELAXED FIT

A contemporary, boxy-shaped sweater featuring subtle textured elbow patches and practical front pockets. Finished with contrast-colour rolled trims at the cuffs, neckline and pockets.

AVAILABLE IN 7 COLOURS.

The TWEED NEP Colours

VEST / SWEATER / BRORA LADIES JACKET



Sand



Pansy



Delphinium



Thunder



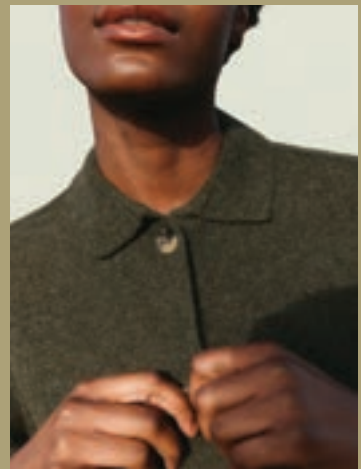
Gravel



Green Lichen



Bark



BRORA LADIES JACKET

STYLE NO: J4361

100% Soft Shetland Wool with multi coloured flecks / 5gg

MADE IN SCOTLAND

SIZES: XS / S / M / L / XL

RELAXED FIT

A contemporary, utilitarian jacket cut to a flattering hip length, featuring front pockets and classic horn buttons. Crafted from soft Shetland wool with subtle multi-coloured flecks, it captures the rustic charm of the Scottish landscape while offering warmth and comfort. Perfect for layering across the seasons.

AVAILABLE IN 7 COLOURS.



The NORWICK LACE Colours

CARDIGAN / SWEATER



Sand



Gravel



Pansy



NORWICK LACE CARDIGAN

STYLE NO: C4414

100% Soft Shetland Wool with multi coloured flecks / 5gg

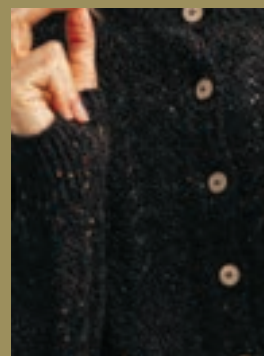
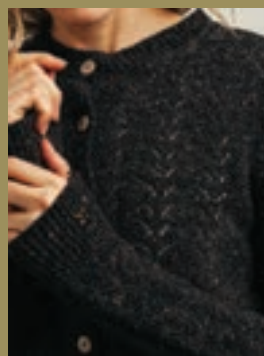
MADE IN SCOTLAND

SIZES: S / M / L / XL

REGULAR FIT

A romantic lace cardigan that feels like a 1950s hand-knitted original garment. Crafted from our exclusive fine, soft Shetland yarn, it features delicate multicoloured tweed neps for subtle texture. Lightweight yet cozy, this sweater is perfect for layering or wearing on its own as a statement piece.

AVAILABLE IN 3 COLOURS.



NORWICK LACE SWEATER

STYLE NO: P4415

100% Soft Shetland Wool with multi coloured flecks / 5gg

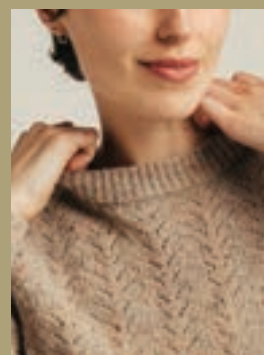
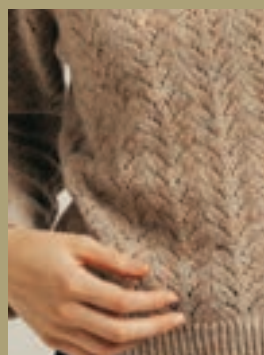
MADE IN SCOTLAND

SIZES: S / M / L / XL

REGULAR FIT

A romantic lace sweater that feels like a 1950s hand-knitted original garment. Crafted from our exclusive fine, soft Shetland yarn, it features delicate multicoloured tweed neps for subtle texture. Lightweight yet cozy, this sweater is perfect for layering or wearing on its own as a statement piece.

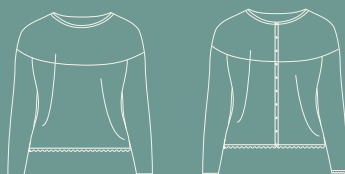
AVAILABLE IN 3 COLOURS.



The VAILA LACE

Taking inspiration from vintage Shetland hand-knitted fine lace shawls, these romantic and nostalgic lace garments are a new and unique design that follows in the footsteps of ERIBÉ's iconic yoke patterns. Resembling delicate hand-knits, each intricate piece is crafted from extra-fine, lightweight Merino wool for a luxurious, airy feel.

The collection is named after Vaila, a beautiful and remote island in Shetland, north of Scotland. Situated south of the Westland peninsula of the Shetland Mainland, Vaila covers 327 hectares and is home to just one house. Rising 95 metres at its highest point, the island hosts an organic sheep farm and is also known for its mountain hares, a true reflection of Shetland's wild and unspoiled charm.





VAILA LACE SWEATER

STYLE NO: P4382

100% Merino Wool / 12gg

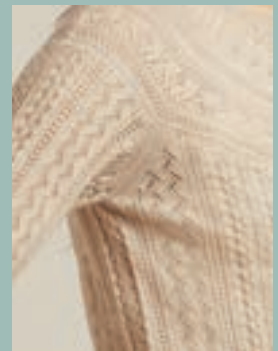
MADE IN EU

SIZES: S / M / L / XL / XXL

SLIM FIT

A fine lace yoke sweater, round neck with long sleeves. Beautifully made with fine merino lace knit, featuring scalloped edging on the collar, cuffs and rib, with yoke detail.

AVAILABLE IN 4 COLOURS.



VAILA LACE CARDIGAN

STYLE NO: C4377

100% Merino Wool / 12gg

MADE IN EU

SIZES: S / M / L / XL / XXL

SLIM FIT

A fine lace yoke crew neck cardigan, round neck with long sleeves and pearl button detailing. Beautifully crafted with fine merino lace knit, featuring scalloped edging on the collar, cuffs, and hem, complemented by yoke detailing.

AVAILABLE IN 4 COLOURS.

The VAILA LACE Colours

SWEATER / CARDIGAN



White



Oatmeal



Electric Red



Soft Denim



VAILA LACE CARDIGAN / WHITE



TREELINE WRAP / STARBURST

The ACCESSORIES

Our colourful scarves, wraps, hats and gloves offer an unrivalled variety of texture, colour and pattern to bring joy to your customers.

ERIBÉ's accessory collection complements the full range in both colour and design, allowing you to merchandise the accessories to suit your retail collection. The accessories add pattern to plain garments and combine stripes with Fairisle to create a contemporary feel with a heritage twist.

We offer a wide selection of colours to match all garments available.



ALLOA BEANIE

STYLE NO: H4322

100% Merino Lambswool / 7gg

MADE IN SCOTLAND

ONE SIZE

Colourblock beanie hat with Fairisle stripe detail.

AVAILABLE IN 8 COLOURS.

ALLOA GLOVES

STYLE NO: G4207

100% Merino Lambswool

MADE IN SCOTLAND

ONE SIZE

Fairisle gloves with contrast inner cuff colour.

AVAILABLE IN 8 COLOURS.

ALLOA FINGERLESS GLOVES

STYLE NO: G4321

100% Merino Lambswool / 7gg

MADE IN SCOTLAND

ONE SIZE

Graphic pattern fingerless gloves.

AVAILABLE IN 8 COLOURS.

ALLOA OPEN MITT

STYLE NO: M4206

100% Merino Lambswool / 7gg

MADE IN SCOTLAND

ONE SIZE

Fairisle patterned mitts with contrast inner cuff colour.

AVAILABLE IN 8 COLOURS.

The ALLOA ACCESSORIES Colours

BEANIE / FINGERLESS GLOVES / GLOVES / OPEN MITT



Salsa-Tango



Ebony



Hazel-Grace



Tyrian-Thistle



Charm-Bonnie



Classic



Braemar-Oakley



Velvet



ALLOA BERET

STYLE NO: H4062

100% Merino Lambswool / 7gg

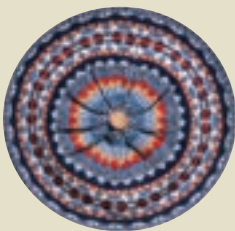
MADE IN SCOTLAND

ONE SIZE

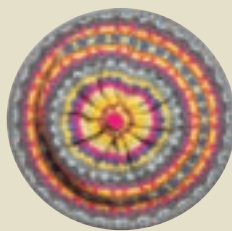
Circular knit Fairisle beret with a small pom-pom and rib hem. It can be worn like a beanie or in true French style.

AVAILABLE IN 8 COLOURS.

The ALLOA BERET Colours



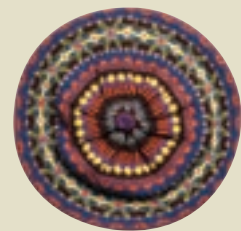
Classic



Charm-Bonnie



Tyrian-Thistle



Ebony



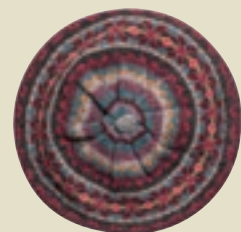
Salsa-Tango



Braemar-Oakley



Hazel-Grace



Velvet

Classic

Tyrian-Thistle

Velvet

Braemar-Oakley

Charm-Bonnie



FAIRISLE SCARF

STYLE NO: S4422

100% Merino Lambswool / 7gg

MADE IN SCOTLAND

ONE SIZE (170 X 23CM)

Scottish Fairisle patterns in a kaleidoscope of ten colours, designed to match the collection and a variety of outfits. Finished with garter stitch edges and a soft handle.

AVAILABLE IN 5 COLOURS.

FAIRISLE NECKERCHIEF

STYLE NO: S4401

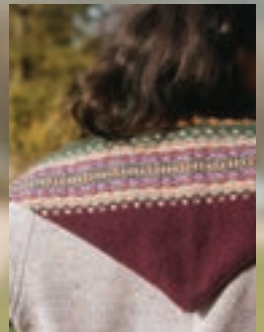
100% Merino Lambswool / 7gg

MADE IN SCOTLAND

ONE SIZE (85 x 31.5cm)

This charming new neckerchief, featuring our Alpine Fairisle pattern blended with two block colours, will accessorise any outfit. Wear it around your neck or head in several ways.

AVAILABLE IN 8 COLOURS.

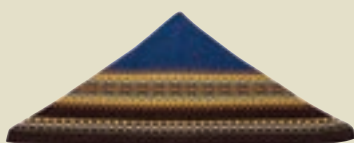




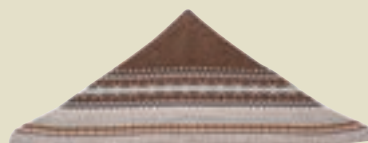
The FAIRISLE NECKERCHIEF Colours



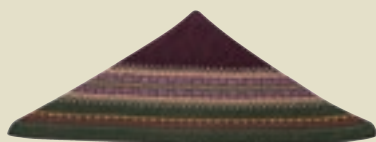
Charm-Bonnie



Ebony



Hazel-Grace



Tyrian-Thistle



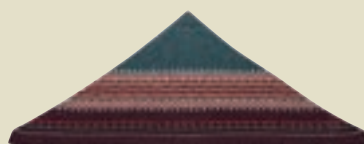
Salsa-Tango



Classic



Braemar-Oakley



Velvet

The ALPINE ACCESSORIES Colours

BEANIE / GLOVES



Amelia



Ebony



Sage



Tyrian



Charm



Blue Morning



ALPINE BEANIE

STYLE NO: H4281

100% Merino Lambswool / 7gg

MADE IN SCOTLAND

ONE SIZE

Fully fashioned shaped beanie to match the collection. Suitable for both women and men.

AVAILABLE IN 6 COLOURS.



ALPINE GLOVES

STYLE NO: G4280

100% Merino Lambswool / 7gg

MADE IN SCOTLAND

ONE SIZE

Fairisle gloves with long cuffs, small rib, and block colour fingers to match the collection.

AVAILABLE IN 6 COLOURS.



Charm

Blue Morning

Ebony

Sage

Amelia

Tyrian



ALPINE SCARF

STYLE NO: S3972

100% Merino Lambswool / 7gg

MADE IN EU

ONE SIZE (172 x 32cm)

Intricate, embroidery-like Fairisle pattern with two-tone tweed textured base and scalloped edges.

AVAILABLE IN 6 COLOURS.



ALPINE SCARF / BLUE-MORNING



BOWDEN RIB BERET

STYLE NO: H4264

100% Merino Lambswool / 7gg

MADE IN SCOTLAND

ONE SIZE

Attractive moving rib beret to complete each outfit.
Matches all accessories and garments.

AVAILABLE IN 4 COLOURS.

BOWDEN RIB OPEN MITT

STYLE NO: G4265

100% Merino Lambswool / 7gg

MADE IN SCOTLAND

ONE SIZE

Rib open mitts with weave pattern detail. Fold back from fingers when active. Wear with the collection.

AVAILABLE IN 4 COLOURS.

The BOWDEN ACCESSORIES Colours

BERET / OPEN MITT



Denim



Orange Soda



Orchard



Berry

Denim

Orange Soda

Orchard

Berry



BOWDEN 3 COLOUR BLOCK STOLE

STYLE NO: S4413

100% Merino Lambswool / 7gg

MADE IN SCOTLAND

ONE SIZE (178 x 68cm)

Elegant and versatile, can be worn as a shawl, scarf, wrap, or blanket. Adds colour while keeping warm.

AVAILABLE IN 4 COLOURS.



ARAN OPEN MITT

STYLE NO: M4391

100% Merino Lambswool / 7gg

MADE IN SCOTLAND

ONE SIZE

New Aran cable mittens with rib hem and cuff to match the collection. Available in unique colours to attract attention while keeping you warm.

AVAILABLE IN 5 COLOURS.



ARAN BUCKET HAT

STYLE NO: H4389

100% Merino Lambswool / 7gg

MADE IN SCOTLAND

ONE SIZE

A brand-new Aran cable bucket hat with a highlight colour on the inside brim that can be turned up as desired. Unique and fun in bright colours to attract attention. Matches the collection.

AVAILABLE IN 3 COLOURS.

The ARAN ACCESSORIES Colours

OPEN MITT



Jeans



Orange Soda



Kelly Green



Piccalilli



Afterglow

BUCKET HAT



Jeans



Orange Soda



Kelly Green



STOBO GRAFFITI BUCKET HAT

STYLE NO: H4390

100% Merino Lambswool / 7gg

MADE IN SCOTLAND

ONE SIZE

Add a wow to any outfit with this new bold Fairisle bucket hat. The underside of the brim has a highlight colour to turn up as desired. Unique, fun and practical that attracts attention.

AVAILABLE IN 5 COLOURS.

STOBO GRAFFITI MINI SCARF

STYLE NO: S4402

100% Merino Lambswool / 7gg

MADE IN SCOTLAND

ONE SIZE (115 x 16cm)

Stobo stripe with a graphic Fairisle pattern, featuring garter stitch edging and rib hem. This mini scarf will accessorise any outfit and keep you warm. Inspired by graffiti artists.

AVAILABLE IN 5 COLOURS.



STOBO OPEN MITT

STYLE NO: M4346

100% Merino Lambswool / 7gg

MADE IN SCOTLAND

ONE SIZE

Cute open knitted mittens in the Stobo collection colourways with signature stripes and Fairisle details.

AVAILABLE IN 5 COLOURS.

The STOBO ACCESSORIES Colours

GRAFFITI MINI SCARF / GRAFFITI BUCKET HAT / OPEN MITT



Coorie



Crackin



Braw



Birlie



Dapper



Braw

Coorie

Crackin

Birlie

Dapper

STOBO SCARF

STYLE NO: S4348

100% Merino Lambswool / 7gg

MADE IN SCOTLAND

ONE SIZE (191 x 19cm)

Stobo stripe and Fairisle detail in a generous long scarf for winter cosiness and style.

AVAILABLE IN 5 COLOURS.



STOBO SCARF / CRACKIN



KINROSS SCARF

STYLE NO: S4406

100% Superfine Lambswool / 7/5gg

MADE IN EU

ONE SIZE (163 x 29CM)

This luxurious, soft scarf blends the romance of lace with blended colourful Fairisle patterns in a new Scottish heritage design. Wear it as a scarf, shawl, knee rug, or wrap it around your head and neck to keep you cosy.

AVAILABLE IN 4 COLOURS.



The KINROSS SCARF Colours



Melissa



Chakra



Blush



Prelude



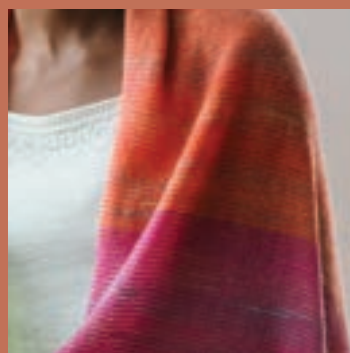
Classic

Braemar

Starburst

Hermes

Romance



TREELINE WRAP

STYLE NO: S4152

80% Lambswool 20% Kid Mohair / 5gg

MADE IN SCOTLAND

ONE SIZE (185 x 85cm)

A beautifully soft and lightweight wrap, giving volume in subtly changing colours and block stripes with a touch of luxury super-kid mohair.

AVAILABLE IN 5 COLOURS.



SUSTAINABILITY

Since the beginning (in 1986), ERIBÉ has been mindful of the environment, choosing to use the best ecological natural yarns and promote sustainable fashion in every collection. Our colourful knitwear never goes out of style. In a world of throw-away clothing, this is slow fashion at its very best, our products are designed to last.

Embedded in our 40-year ERIBÉ culture is a deep-rooted commitment to using, re-using, recycling, sharing and donating. We have always been an eco-first business, where waste is simply unacceptable. Wool is nature's miracle fibre. By choosing wool first, we encourage sustainability, it's renewable, biodegradable and traceable. In short, we create beautiful clothes with a responsible and positive environmental impact.

.....

FOR MORE INFORMATION ON THE UNIQUE PROPERTIES OF WOOL AND WHAT MAKES IT
ONE OF THE BEST FIBRES FOR SUSTAINABLE, LOW IMPACT CLOTHING VISIT:

WWW.WOOLMARK.COM/ENVIRONMENT/OUR-VISION

WWW.WOOLMARK.COM/ENVIRONMENT/FASHIONS-ENVIRONMENTAL-IMPACT

WWW.CAMPAIGNFORWOOL.ORG/ABOUT-WOOL WWW.CAMPAIGNFORWOOL.ORG/WHYWOOLMATTERS

Below are just some of the steps we have taken to reduce our environmental impact across all areas of the business. We are constantly seeking to improve our sustainability to help us achieve our environmental goals.



RAW MATERIALS

We use yarn which breaks down into its component parts at the end of its life and can even be composted. The many unique properties of natural wool make it one of the best sustainable fibres:

- 100% NATURAL
- BIODEGRADABLE
- RENEWABLE AND SUSTAINABLE
- STRONG AND DURABLE
- LOW CARBON IMPACT
- RECYCLABLE



MANUFACTURING

We use green energy produced by solar panels to power our factory. Our state-of-the-art washing machines (used for 20% of our collection) use minimal water and soft Scottish water reduces the amount of chemicals required.

The high spin cycle has reduced drying time. Faulty garments are mended wherever possible to prevent re-making.

Our suppliers and manufacturing partners are chosen for their high environmental standards and ethical working practices.



PACKAGING

We use pins and cotton strings to attach swing tags rather than plastic kimbles. We have replaced our plastic garment bags with biodegradable alternatives that leave zero harmful waste or microplastics behind.



REDUCING WASTE

We only make to order, unlike fast fashion retailers who often overproduce, leading to excess stock that must be heavily discounted or sent to landfill. Knitting is much kinder than cut & sew in woven fabrics. Nearly all of the raw material is used, as each garment panel is knitted to size, resulting in virtually zero waste.



RE-USE & RE-CYCLE

Faulty panels are either re-wound back into yarn for future knitting or repurposed into new products. We also make use of surplus yarn and discontinued colours by creating scarves and garments, which are sold at discounted prices or donated to charities.



DESIGN

Our timeless knitwear is designed to outlast short-lived fashion trends. We thoughtfully build on proven designs with fresh colours and only introduce new styles we know our customers will love. Every element, from our yarn to our buttons and trimmings, is carefully selected to minimise environmental impact.

Size INFORMATION

ERIBÉ uses size labels 'XS-XXL' but as a rough guide, these relate to national sizes (see below). We also offer 'split sizing' on certain styles, which fall between the two 'full' sizes, the wear of the smaller size is a snugger fit, and the larger is more relaxed.

WOMENS

ERIBÉ SIZES	XS	S	M	L	XL	XXL
UK / AUS	6-8	8-10	10-12	12-14	14-16	16-16
EUROPEAN	36	38	40	42	44	46
US	4-6	6-8	8-10	10-12	12-14	14-16

We offer a range of different fits dependent on individual styles, each with the approximate measurements as the charts below. Some styles will differ, such as 'longline' styles with added length. Due to the natural properties of wool, guideline for size, tolerance up to 2cm.



WOMEN'S SLIM FIT

STYLES:

ALPINE CARDIGAN, ALPINE SHORT CARDIGAN, ALPINE SHORT SWEATER, KINROSS WAISTCOAT, ARAN CARDIGAN, SOLWAY LACE CARDIGAN, SOLWAY LACE SWEATER, VAILA LACE CARDIGAN, VAILA LACE SWEATER, VAILA LACE CAMISOLE.

ERIBÉ SIZES	XS	S	M	L	XL	XXL
CHEST WIDTH	41cm	44cm	47cm	50cm	53cm	56cm

WOMEN'S REGULAR FIT

STYLES:

ALPINE SWEATER, ALPINE ROLL COLLAR SWEATER, ALPINE HOODY SWEATER, WESTRAY CARDIGAN, WESTRAY SWEATER, WESTRAY VEST, KINROSS SWEATER, KINROSS CARDIGAN, KINROSS COWL NECK SWEATER, STOBO STRIPE SWEATER, STOBO GRAFFITI SWEATER, NORWICK LACE CARDIGAN, NORWICK LACE SWEATER.

ERIBÉ SIZES	XS	S	M	L	XL	XXL
CHEST WIDTH	44cm	47cm	50cm	53cm	56cm	59cm

WOMEN'S RELAXED FIT

STYLES:

ALPINE BREEZE SWEATER, STONEYBREK SWEATER, WESTRAY BLOCK SWEATER, CORRY LADIES RAGLAN SWEATER, CORRY TANK TOP, CORRY HOODY SWEATER, CORRY T-SHIRT SWEATER, CORRY LOFT CARDIGAN, MELROSE TWEED SWEATER, MELROSE TWEED CARDIGAN, MELROSE TWEED TUNIC, MELROSE TWEED DRAPE TOP, TWEED NEP SWEATER, TWEED NEP VEST, BRORA LADIES JACKET.

ERIBÉ SIZES	XS	S	M	L	XL	XXL
CHEST WIDTH	48cm	51cm	54cm	58cm	61cm	64cm

PLEASE NOTE: ALL SIZE CHARTS SHOWN ARE A GUIDELINE ONLY.
FOR MORE DETAILED SIZE GUIDES, PLEASE REFER TO OUR NEW TRADE PORTAL.

Caring for your ERIBÉ KNITWEAR

It is perfectly normal that when you first wear a pure wool garment, loose fibres near the surface rub together during movement and form little balls of wool known as pilling or bobbling. We have put together this simple guide to help you beat the bobbles and keep your ERIBÉ garment looking fantastic for many years to come...



HANDWASH IS BEST

THIS IS THE GENTLEST WAY TO WASH YOUR KNITWEAR AND THE BEST WAY TO AVOID SHRINKAGE AND MINIMISE PILLING. WASH BY HAND IN TEPID WATER.



WASH INSIDE OUT

ANY PILLING CAUSED BY WASHING WILL BE ON THE INSIDE NOT THE OUTSIDE.



USE LIQUID SOAP

ADD A SMALL AMOUNT OF LIQUID HAND SOAP AND SOAK THE GARMENT IN LUKEWARM WATER FOR 5 MINUTES. NEVER USE REGULAR WASHING DETERGENT AS THIS CAN DAMAGE THE FIBRES.



SQUEEZE, DON'T RUB

TO WASH THE GARMENT YOU MUST GENTLY SQUEEZE, WITHOUT RUBBING, THE GARMENT IN THE WATER. LAY YOUR DAMP GARMENT ON A LARGE BATH TOWEL. GENTLY ROLL THE TOWEL AND THE GARMENT TOGETHER MUCH LIKE A SWISS ROLL TO REMOVE THE EXCESS WATER.



AIR DRY FLAT

PULL GENTLY TO SIZE AND ALLOW TO DRY FLAT ON A CLEAN TOWEL AWAY FROM DIRECT HEAT SOURCES SUCH AS RADIATORS. WHEN DRY, PRESS TO SHAPE USING A DAMP TOWEL OR LIGHTLY STEAM BY HOLDING A STEAM IRON JUST ABOVE THE SURFACE OF THE GARMENT.



REMOVE ANY PILLING

WHEN THE GARMENT IS COMPLETELY DRY, GENTLY REMOVE THE SMALL PILLS EITHER BY HAND OR WITH A HAND-HELD SWEATER COMB – NEVER USE SCISSORS. BY DOING THIS AFTER EACH OF THE FIRST 3-4 WASHES, YOU WILL FIND THAT THE PILLING SUBSIDES AND WILL EVENTUALLY DISAPPEAR.

Forward ORDERING DEADLINES : June 2026 onwards

At ERIBÉ, all garments are created on a made-to-order basis. This means that once your selection is confirmed, each piece is individually crafted with care specifically for you. Due to the handcrafted nature of our knitwear and our use of high-quality natural fibres, which must be pre-purchased, production requires several months to complete.

To secure a place in our production schedule, we recommend submitting your requirements as early as possible. Our capacity is limited, and we may need to close our booking window once we reach full workload, or alternatively offer delivery dates later than initially requested. With our extensive range of styles and colourways, we also provide phased delivery options.

As availability and timing may evolve, please refer to your Agent or Sales contact for the most current information, and ensure you are subscribed to our newsletter for updates on production windows and new opportunities throughout the season.

CHAPTER TWO : 2026 ORDER DEADLINES

FULL COLLECTION

Order by 27th February and choose your own delivery month from July – October 2026.

LIMITED RUN GARMENTS (AMELIA AND CHARM ALPINES AND STONEYBREK)

Order as early in the sales window as possible to ensure your allocation of these garments as numbers will be limited due to rarity of yarn colour.

WORKING WITH ERIBÉ IN 2026 / 2027

- There is a minimum of 2 pcs per colour on all products ordered.
- £2,000 / €2,000 / \$4,000 AUS minimum spend to order with us.
- New customers will be on proforma terms and can apply for 30-day credit terms following first year review.
- Payments must be made in the currency on the invoice, and to the corresponding bank account.
- Orders totalling over £2,500 / €3,000 come with free carriage within the EU.
- Customer will have 7 days from receipt of order confirmation, or by the next order deadline, whichever is sooner to check any discrepancies, thereafter the order will be deemed accepted and confirmed.
- If customer cancels order more than 8 working days after receiving confirmation, they are responsible to pay a cancellation cost valued at 30% of their order.

If the customer order is received less than 8 days before the deadline, the number of days to cancel is reduced accordingly – orders cannot be changed or cancelled more than one day after the order deadline.

PLEASE SEE FULL TERMS AND CONDITIONS OF ORDERING FOR FULL DETAILS.

HOW TO CONTACT ERIBÉ

SALES / DESIGN / MARKETING / ACCOUNTS / SHOWROOM / DESPATCH / MANUFACTURING

ERIBÉ Knitwear Ltd, Rose House, Dingleton Road, Melrose, TD6 9QY Scotland, UK.

SALES ENQUIRIES: +44 (0)1896 755540 EMAIL: sales@eribe.com

ALL OTHER ENQUIRIES: +44 (0)1896 750952

Placing an ORDER

Please contact sales@eribe.com to get your sign in details and user guide for our Trade Portal.
View images of all styles and prices in your currency on your own private account.

To place an order and for details on how to set up your
own ERIBÉ Trade Portal account please contact:

Tel: +44 (0)1896 755540 Email: sales@eribe.com

AGENTS - UK, EUROPE AND BEYOND



SOUTHERN ENGLAND

CONTACT: Andy Nicholls

TEL: 07967 096 734 EMAIL: andy@eribe.com



SPAIN / RAMON MONTIEL GOMEZ

CONTACT: Ramon Montiel

ADDRESS: c. Sepulveda, 185, 2-2a 08011 Barcelona, Spain

TEL: (+34) 93 451 21 94 / MOB: (+34) 670 09 38 77

EMAIL: rmontiel740@gmail.com

www.luxknitshowroom.com



ITALY / HEDA SHOWROOM MILANO

CONTACT: Hera Colombo / Daniele Zanardi

EMAIL: h.colombo@heda.it MOB: +39 331 8997882

EMAIL: d.zanardi@heda.it MOB: +39 347 2820751

SHOWROOM TEL: +39 02 54123995

EMAIL: showroom@heda.it

ADDRESS: Heda Showroom, Via Macedonio

Melloni 37 20129 Milano

Insta: @heda.showroom



AUSTRIA | FREE MOUNTAIN GMBH

CONTACT: Andreas Schmied

ADDRESS: Rupertgasse 4, 5020 Salzburg, Austria

TEL: +43 662 876 108 / MOB: +43 664 2230 640

EMAIL: office@freemountain.at / www.freemountain.at



SOUTH GERMANY | AGENTUR ELKE WIRICHS

CONTACT: Elke Wirichs

ADDRESS: Heinrich-Kley-Str. 12, 80807

München Schwabing, Germany

TEL: +49 89 3230 8100 / MOB: +49 177 3236 627

EMAIL: info@elke-wirichs.com / www.elke-wirichs.com

NORTH GERMANY | WOLLAGENTEN - AGENTUR MUMME

CONTACT: Carsten Mumme

ADDRESS: Kaethe-Kollwitz-Str. 115, 04109 Leipzig, Germany

TEL: +49 151 4190 5377 EMAIL: post@wollagenten.de

www.wollagenten.de



DENMARK / SWEDEN | AN APPAREL AGENCY

CONTACT: Sophie Vang

ADDRESS: Baunevej 19, 3400 Hillerød, Denmark

TEL: +45 53 73 10 11

EMAIL: sophie@anapparel.agency



NORWAY - HELENE AABY AGENTURER

CONTACT: Helene Aaby

ADDRESS: Torvveien 5, 1383 Asker, Norway

TEL: +47 913 03 037 EMAIL: helene@aabyagenturer.no

Insta: @heleneaabyagenturer



THE NETHERLANDS / MAAK! FASHION AGENCY

CONTACT: Lucas Hubrecht & Akke Ottenbros

ADDRESS: Utrechtseweg 186, 6862 AV Oosterbeek (Nederland)

TEL: +31 (0) 644 100 659 EMAIL: info@maakagency.nl

www.maakagency.nl



SWITZERLAND | THE FERRARI AGENCY

CONTACT: Heidy & Peter Ferrari

ADDRESS: Muehlethalstrasse 17, 4800 Zofingen, Switzerland

TEL: +41 076 587 61 53 / TEL: +41 076 593 88 67

EMAIL: theferrariagency@gmail.com

www.theferrariagency.com



AUSTRALIA & NEW ZEALAND | LE BUREAU FASHION MARKETING

CONTACT: Kim Amber Rossouw

ADDRESS: Suite 7, 112 McEvoy Street, Alexandria,

NSW 2015, Sydney

TEL: +61 (02) 96984450 / MOB: +61 (0) 407227659

EMAIL: kim@lebureauofashion.com

www.lebureauofashion.com











ROSE HOUSE, DINGLETON ROAD, MELROSE,
SCOTTISH BORDERS, UK TD6 9QY
TEL: +44 (0)1896 755540
EMAIL: SALES@ERIBE.COM

WWW.ERIBE.COM
INSTAGRAM: @ERIBE.KNITWEAR