



Education Estates® SEND Conference

05 February 2026 | ExCeL London



EDUCATION ESTATES® SEND CONFERENCE PARTNERS

 AtkinsRéalis

 BAILY
GARNER

 GallifordTry

 mcavoy

NOVIUN
ARCHITECTS

 TG ESCAPES
modular eco-buildings

 VISION
BUILT
A SISK COMPANY

Making Space for SEND: Thinking Digitally with Centralised Estate Data

CHAIR: Paul Turpin, Principal, Education - Arcadis

Speakers:

Sue Corbett, Head of Capital Programmes, Star Academies

Samantha Smith, Director, AHR

Sarah Primarolo, Partner / Architect, Playle & Partners LLP

Kate Persaud, Headteacher, Elmfield School for Deaf Children

Roksana Wyrwa, Architectural Designer, Arcadis

EDUCATION ESTATES® SEND CONFERENCE PARTNERS



Education Estates SEND Conference

Designing Schools for Tomorrow's Needs: Rethinking Mainstream Estates for Future SEND Adaptations

05 February 2026









Pinball Game

Lesson 5

You will need:

- Pinball game
- Pinball game
- 10 shapes
- Sandpaper
- Pens

Task:

1. Sanding 10 shapes into
2. Initial all 10 shapes.
3. Colour the top side of
4. Leave to dry.

10 Shapes

We can help your project make a positive impact



www.ahr.co.uk

Stay in touch



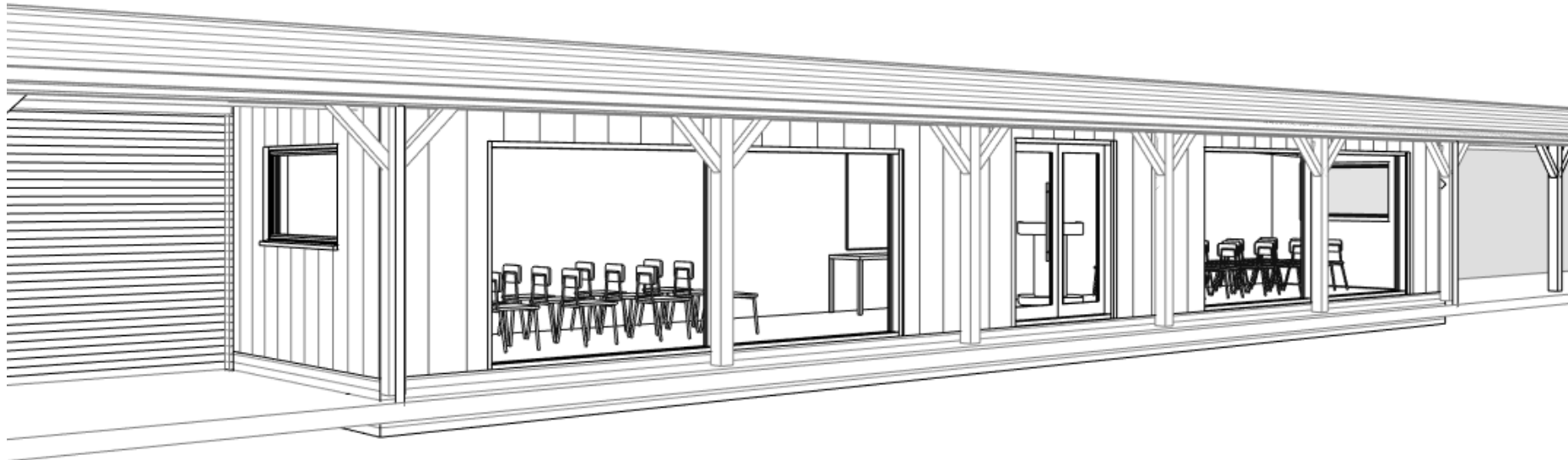
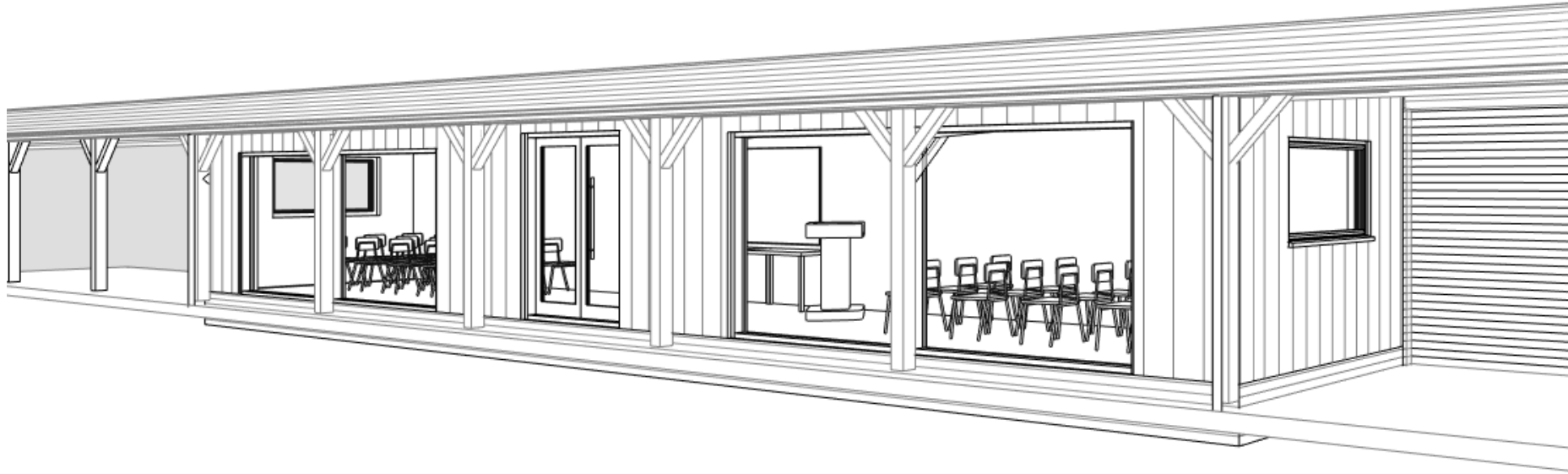
Samantha Smith
Director

E: samantha.smith@ahr.co.uk
T: +44 (0)7802 330 384



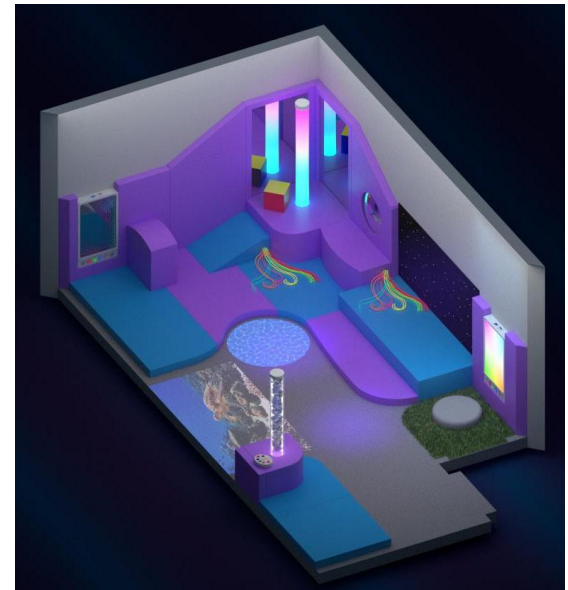
Connect with me on LinkedIn





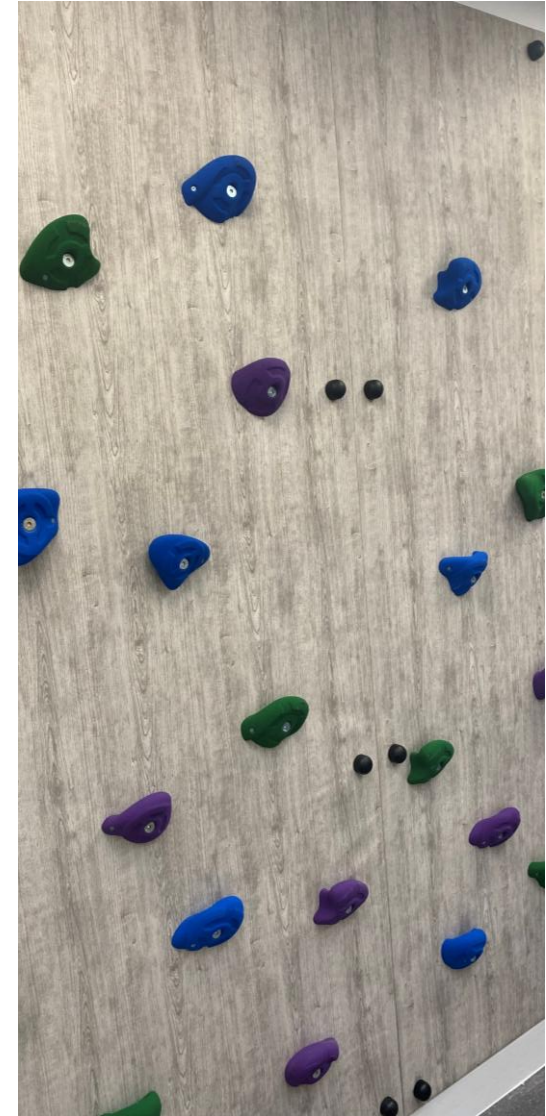


 **PLAYLE &
PARTNERS**





 **PLAYLE &
PARTNERS**



- **Bristol school for deaf children aged 3-16**
- **A Sign Bilingual school**
- **PAN 76**
- **Students come from 8 LAs, arriving by taxi**
- **Following National Curriculum**



ELMFIELD
SCHOOL FOR DEAF CHILDREN





The collage consists of four photographs. The top-left photo shows a wooden sculpture of three figures holding flags with the letters 'B', 'S', and 'L'. The top-right photo shows two women, one in a purple cardigan and one in a white lab coat, both using hand gestures. The bottom-left photo shows a woman in a black dress and glasses using hand gestures to a young girl. The bottom-right photo shows a man in a blue polo shirt and a woman in a red shirt and grey cardigan, both using hand gestures to a group of children in school uniforms.

What is sign bilingualism?



Creating Deaf Space



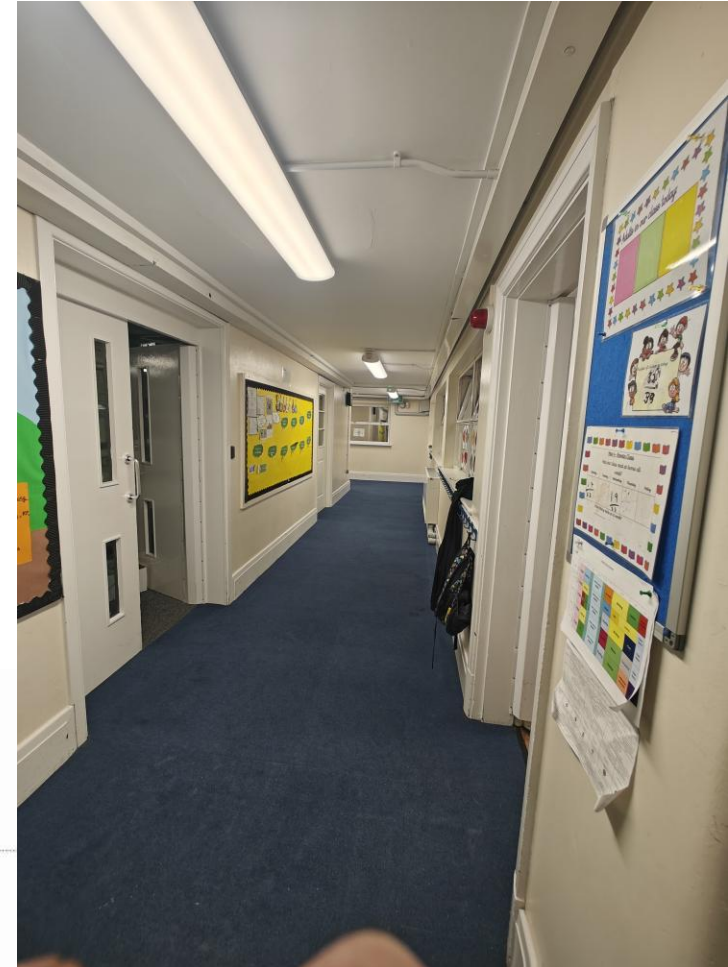


Our new Secondary Opening April 2027



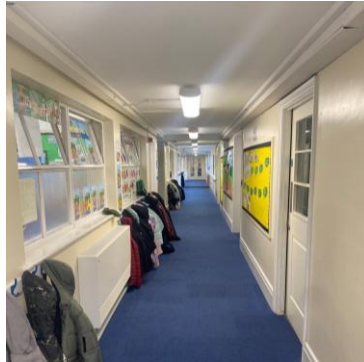
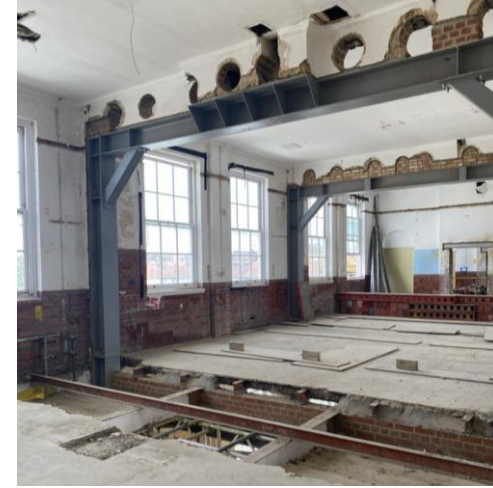
W1000000

- Circulation
- Store
- Classroom
- Breakout Spaces
- Dining
- Toilets/Kitchen
- Staff Areas





Designing Schools for Tomorrow's Needs: Rethinking Mainstream Estates for Future SEND Adaptations



MYTH #1

Old Schools Can't Teach New Tricks





Vehicular Entrance
(Drop-off/Pick-Up)

**Sensory Garden &
Outdoor Classroom**

Vehicular Exit
(Drop-off/Pick-Up)

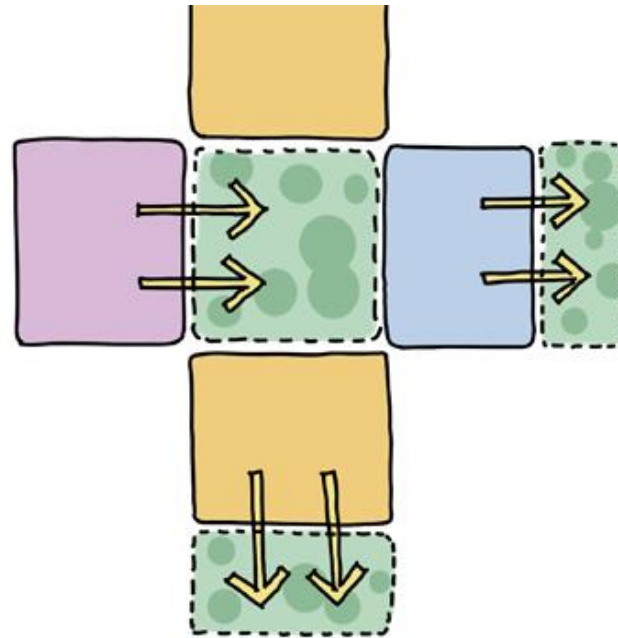
Main Entrance
For pupils / staff and visitors.

Community Cafe
for pupils / the community

Kitchen Garden
serving the community cafe

MYTH #2

If It Wasn't Built for SEND,
It Won't Work for SEND



ELMFIELD

School for Deaf Children



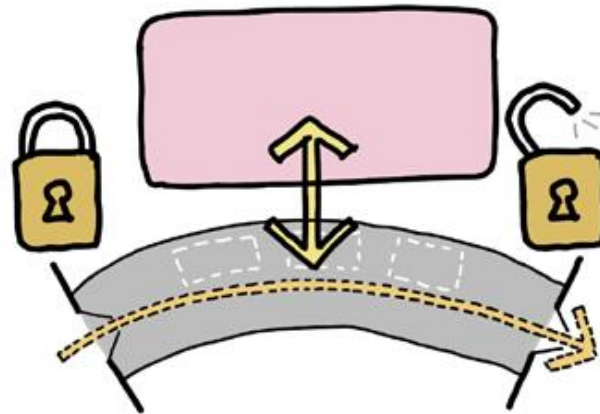
E-ACT Badock's Wood
Academy

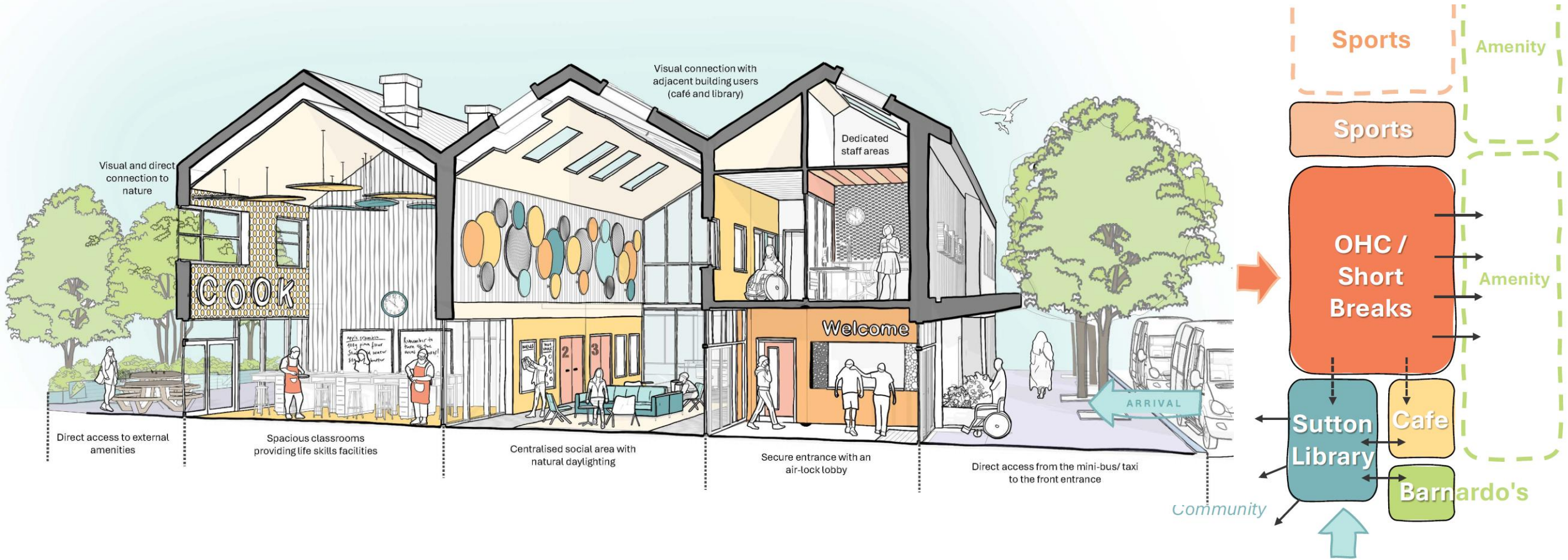
DROP-OFF / PICK-UP

Vehicular Access
(Drop-off/Pick-Up & Parking)

SCHOOL
KEEP CLEAR

MYTH #3
Safety Means Fences.





Designing Schools for Tomorrow's Needs: Rethinking Mainstream Estates for Future SEND Adaptations



Paul Turpin

Principal, Education, Arcadis



Sarah Primarolo

Partner / Architect, Playle & Partners LLP



Sue Corbett

Head of Capital Programmes, Star Academies



Samantha Smith

Director, AHR



Kate Persaud

Headteacher, Elmfield School for Deaf Children



Roksana Wyrwa

Architectural Designer, Arcadis



Education Estates® SEND Conference

05 February 2026 | ExCeL London



EDUCATION ESTATES® SEND CONFERENCE PARTNERS

 AtkinsRéalis

 BAILY
GARNER

 GallifordTry

 mcavoy

NOVIUN
ARCHITECTS

 TG ESCAPES
modular eco-buildings

 VISION
BUILT
A SISK COMPANY