

# Cavalier storage-type electric water heaters



- Recovery rates from 155 to 930 litres/hour
- Multiple immersion elements for greater efficiency
- ErP tested and certified
- Up to 8 bar working pressure
- 3-phase electric water heater
- Zero on-site emissions
- Integral safety switch to prevent dry-firing



**Lochinvar**<sup>®</sup>  
HIGH EFFICIENCY BOILERS & WATER HEATERS

# Lochinvar

## Cavalier electric storage water heaters

Cavalier electric storage water heaters are floor standing and available in seven models with storage capacities ranging from 173 to 264 litres. They can provide hot water recovery rates from 155 to 930 litres per hour, based upon a temperature rise of 50°C.

Suitable for a range of small to medium-sized commercial and industrial applications, they provide hot water with zero on-site emissions; as such they are fully BREEAM and 'London plan' compliant.



Cavalier water heater  
7 models available

### ErP / EcoDesign certified product

The Cavalier range has been tested and certified in accordance with the EcoDesign directive, providing peace of mind for specifiers, contractors and end users.

### Insulated and jacketed storage vessel

With a storage vessel construction from enamelled steel, Cavalier water heaters are capable of operating at working pressures of up to 8bar. An integral magnesium anode provides cathodic protection. Correx non-sacrificial powered anode kits are available as ancillary options. The storage vessel is insulated with 65mm polyurethane foam and encased in an enamelled grey jacket; heat losses are substantially lower than the maximum allowed under Building Regulations, Part L.

### Designed for ease of maintenance

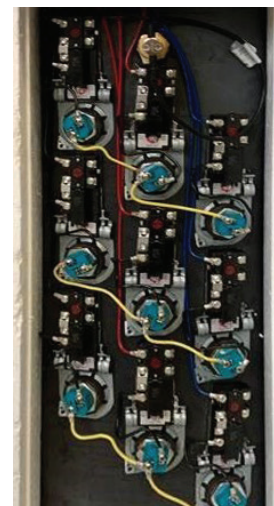
Access to electrics is provided from the front of the Cavalier water heater



### Multiple immersion elements

This is one of the key features of the Cavalier range; each model has multiple Immersion elements ranging from 3 x 3kW elements at the lowest output (9Kw) model up to 9 x 6kW elements on the highest output (54kW) model.

Each element has its own adjustable thermostat, with settings ranging from 49 to 82°C, and operate in sequence to provide fast recovery of hot water and better efficiency especially during off-peak demand periods. The independent operation of each element provides stand-by, in the event of individual element failure.



### BREEAM and zero on-site emissions

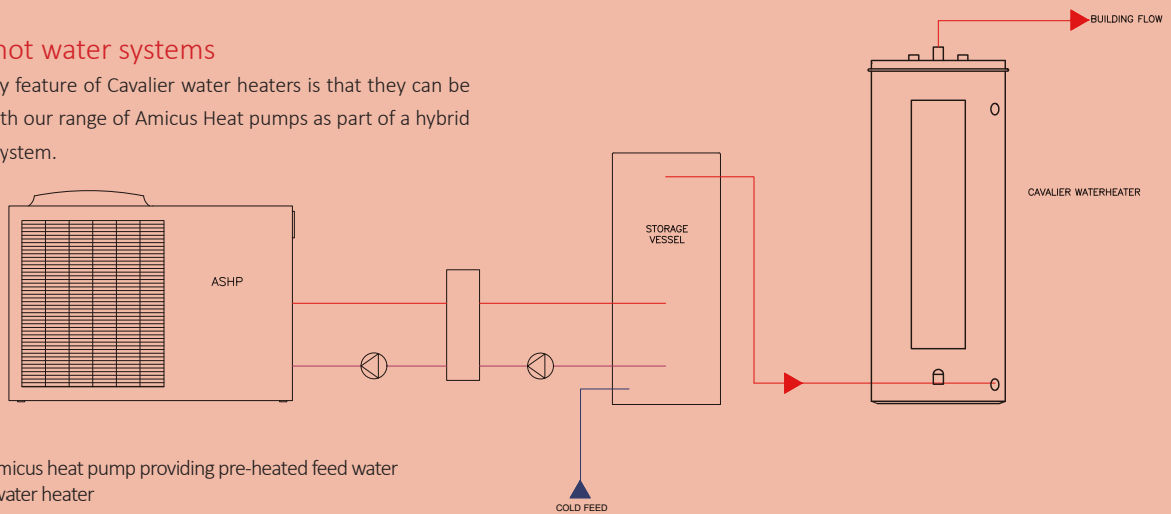
BREEAM is the world's longest established method of assessing, rating and certifying the sustainability of buildings. It aims to help construction professionals and building owners to manage and mitigate risk through demonstrating sustainability performance during planning, design, construction, operation or refurbishment. It is also designed to help lower running costs, maximise returns through market value, attract, and retain tenants with desirable places to live and work.

Cavalier water heaters do not have any on-site carbon or NO<sub>x</sub> emissions making them particularly suitable for BREEAM projects.

breeam

## Hybrid hot water systems

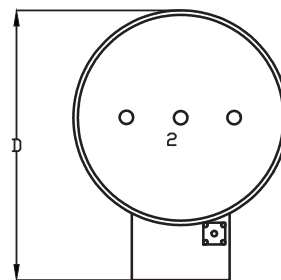
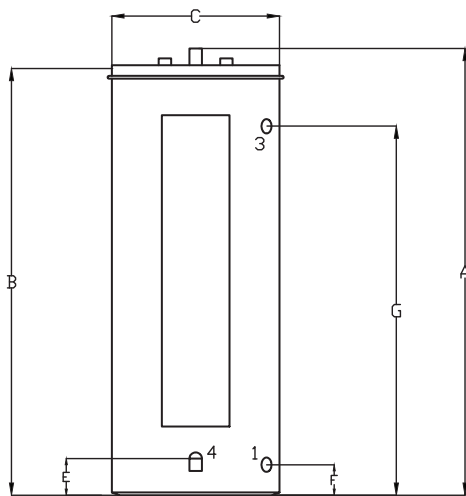
Another key feature of Cavalier water heaters is that they can be installed with our range of Amicus Heat pumps as part of a hybrid hot water system.



Lochinvar Amicus heat pump providing pre-heated feed water to Cavalier water heater

## Product Dimensions

	Description		AMP200 Models	AMP300 Models
A	Height hot water connection	mm	1460	1580
B	Height of upper side of device	mm	1420	1540
C	Diameter of water heater	mm	560	640
D	Depth	mm	690	790
E	Height of drain valve	mm	125	125
F	Height cold water supply	mm	125	125
G	Height T&P connection	mm	1230	1335
1	Cold water connection	NPT	1¼"	1¼"
2	Hot water connection	NPT	1¼"	1¼"
3	T&P connection	NPT	¾"	¾"
4	Drain plug connection	NPT	¾"	¾"





## Technical specification

Water heater model		AMP 200-9	AMP 200-18	AMP 200-36	AMP 300-9	AMP 300-18	AMP 300-36	AMP 300-54
Input	kW	9	18	36	9	18	36	54
<b>Efficiency data - building regulations</b>								
Efficiency	%	100	100	100	100	100	100	100
Storage vessel heat loss	kWh/24 Hr	1.5	1.5	1.5	1.9	1.9	1.9	1.9
<b>Efficiency data - ErP and energy label</b>								
Ecodesign energy label rating		C	C	C	C	C	C	C
Water heater efficiency	%	38	38	38	38	38	38	38
<b>Electrical data</b>								
Input	kW	9	18	36	9	18	36	54
Number of elements	-	3	3	6	3	3	6	9
Electrical requirements	VAC/Hz/Phase	400 (-15%, +10%) / 50 / 3						
Electric current	A	11-13	23-25	46-50	11-13	23-25	46-50	69-75
<b>General data</b>								
Recovery rate @ 44°C	l/hr	176	352	703	176	352	703	1056
Recovery rate @ 50°C	l/hr	155	310	619	155	310	619	930
Dimensions (height)	mm	1420	1420	1420	1540	1540	1540	1540
Dimensions (width)	mm	560	560	560	640	640	640	640
Dimensions (depth)	mm	690	690	690	790	790	790	790
Storage capacity	litres	173	173	173	264	264	264	264
Weight (empty)	kg	73	73	73	110	110	110	110
Weight (full)	kg	273	273	273	410	410	410	410
Hot outlet connection (inches)	NPT	1½"	1½"	1½"	1½"	1½"	1½"	1½"
Cold feed connection (inches)	NPT	1½"	1½"	1½"	1½"	1½"	1½"	1½"
Sound power level	LWA(dB)	15	15	15	15	15	15	15
Max outlet temperature	°C	82	82	82	82	82	82	82
Maximum working pressure	bar	8	8	8	8	8	8	8

Energy label, product fiche and ErP data table are available at [www.lochinvar.ltd.uk](http://www.lochinvar.ltd.uk)

## Ancillary options

- Correx non-sacrificial anode kit
- De-stratification pump sets
- Unvented system kits



For further information on the Cavalier water heaters ,  
including ICM & user instructions and  
our full warranty terms and conditions,  
please visit our website: [www.lochinvar.ltd.uk](http://www.lochinvar.ltd.uk)



7 Lombard Way, The MXL Centre, Banbury, Oxon, OX16 4TJ

Tel: +44(0) 1295 269 981, Fax: +44(0) 1295 271 640, Email: [info@lochinvar.ltd.uk](mailto:info@lochinvar.ltd.uk)

[www.lochinvar.ltd.uk](http://www.lochinvar.ltd.uk)

*Lochinvar Ltd reserves the right to change  
specifications without prior notice*

LOC\_20\_0001 | AMP | July 2020