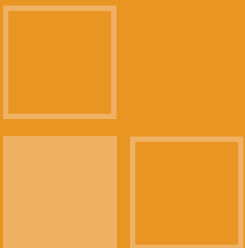




**LUX**  
Manufacturer  
of the Year 2018



Lighting for **Education**

# Tamlite Lighting

Tamlite Lighting is no ordinary lighting manufacturer. Founded in 1967, we live and breathe our philosophy of Lighting for a Living. For us, it is much more than a marketing tagline. It crystallises how we think about light and the impact it has on every aspect of our lives.

How we live, work, play, learn and exist are all basic human needs that are influenced by light. Creating environments that are perfectly lit - comfortable, practical, efficient, safe and promote wellbeing - is what we do, and it is what we have done well for over 50 years.

As we have expanded, Tamlite Lighting remains committed to its British roots, with extensive R&D, testing and manufacturing activities managed out of factories in Redditch and Telford. This gives customers the assurance that any Tamlite product has been made with quality in mind.

Today, Tamlite offers over 500 product ranges and in excess of 15,000 products, cementing its place as one of the industry leaders in cutting-edge lighting solutions.

The purpose of this brochure and topics below is to demonstrate how Tamlite can provide the ideal lighting solutions for a range of education applications.

- The role of lighting in education facilities
- Lighting for Wellbeing
- Connected lighting solutions
- Lighting requirements across educational establishments
- Key products
- Education case studies



As a UK manufacturer we have one of the widest lighting ranges across:

Communal

Education

Emergency

Healthcare

Industrial

Office

Retail & Leisure

Sports

Urban

Warehouse & Logistics

# Tamlite Sectors

Tamlite designs, manufacture and supply outstanding lighting solutions to a wide range of sectors. Having achieved the LIA Quality Assurance award, and as a BAFE registered company, Tamlite provides quality lighting products and schemes for a variety of applications. Tamlite is a specialist in the Education sector, working with Vice-Principals, Vice-Chancellors, Estate Directors, Estate Engineers, Facility Managers and School Heads, helping to create 'future-proofed' educational establishments. Tamlite understands that educational facilities need to be inclusive and safe, providing students and staff with the right environment to work and learn.

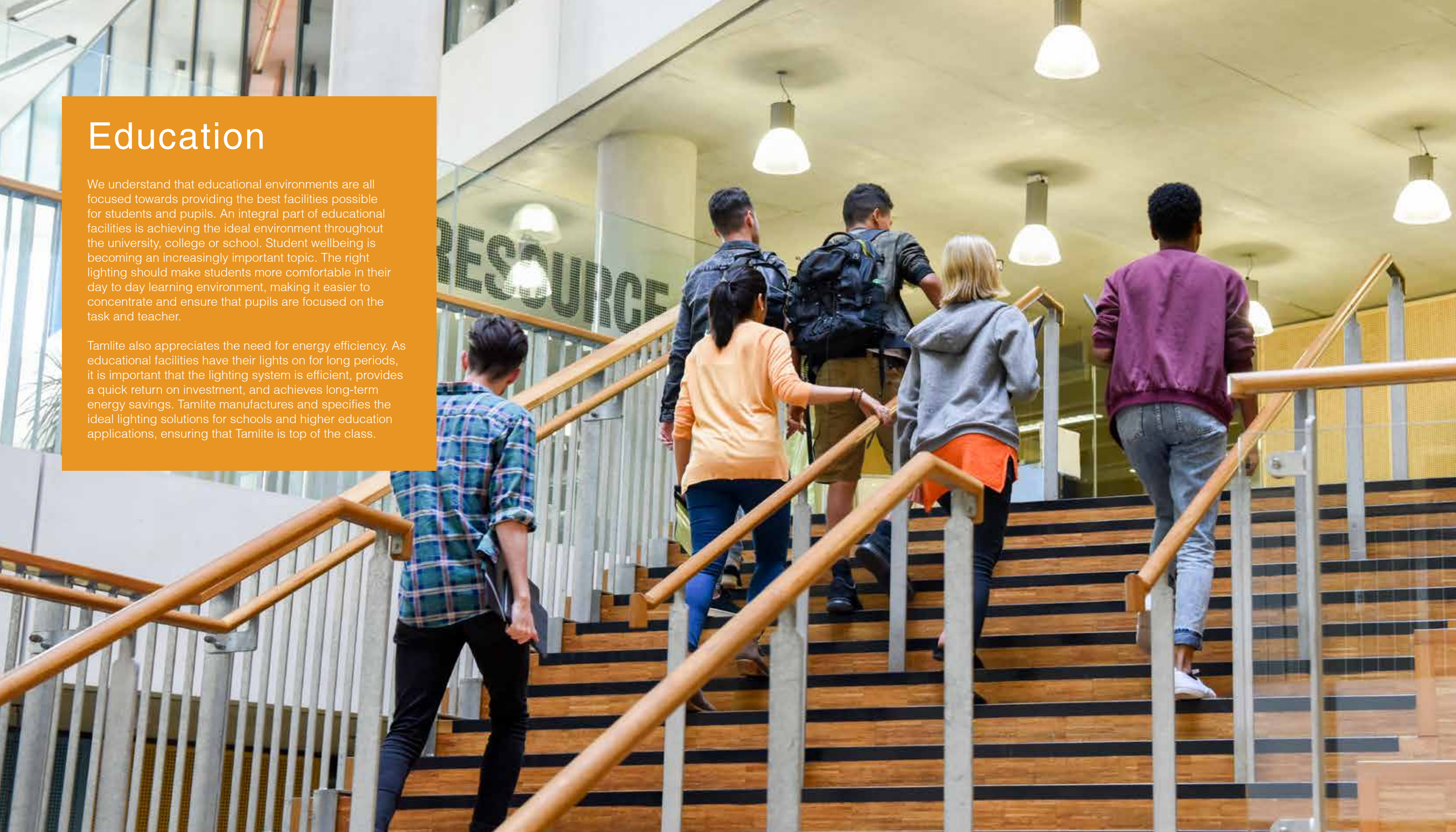




# Education

We understand that educational environments are all focused towards providing the best facilities possible for students and pupils. An integral part of educational facilities is achieving the ideal environment throughout the university, college or school. Student wellbeing is becoming an increasingly important topic. The right lighting should make students more comfortable in their day to day learning environment, making it easier to concentrate and ensure that pupils are focused on the task and teacher.

Tamlite also appreciates the need for energy efficiency. As educational facilities have their lights on for long periods, it is important that the lighting system is efficient, provides a quick return on investment, and achieves long-term energy savings. Tamlite manufactures and specifies the ideal lighting solutions for schools and higher education applications, ensuring that Tamlite is top of the class.





# Wellbeing at Work

From children to young adults, the spaces in which we teach are changing. They are becoming more dynamic, more considered, more human-centric. As well as temperature, humidity and ventilation, lighting is central to providing the optimal conditions for both lecturer and student.

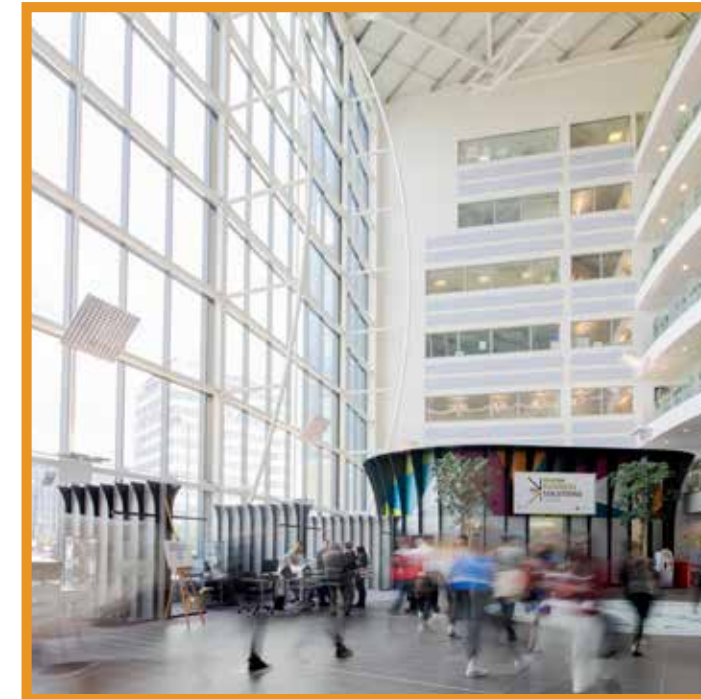
A number of studies indicate that in universities and higher education establishments, attention levels are significantly linked to light. Concentration, focus and learning retention are key to maximising academic performance, and the right lighting can help boost these essential elements among university students.

In facilities for younger pupils, lighting helps children to reach their full potential in learning environments that are perfectly tuned to stimulate maximum concentration, cognition and creativity. What's more, the right kind of lighting can have a really positive effect on performance and social behaviour. A calmer learning environment for pupils is often the key ingredient for lower levels of stress in the classroom, aiding teachers at work.

Wellbeing in education is a concern right across the supply chain. We work closely with architects; bursars; FMs; governors; and headteachers to optimise learning environments for future generations through perfectly lit learning spaces.



# Perfectly Lit Workspaces



In education facilities, schoolchildren and university students are often required to be in class in the morning. This causes them to miss the essential morning light needed to stimulate the circadian system, particularly in winter, which regulates body temperature, alertness, appetite, hormones and sleep patterns.

Research shows that modern, intuitive LED lighting in universities, colleges and schools can help children to overcome early-morning tiredness and boost alertness and concentration levels throughout the day. Studies conclude that those who study under human-centric light feel more invigorated and positive. The bottom-line benefit? During school hours, children's bodies – and brains – will perform better, teacher absenteeism and stress will be reduced, providing the best outcome for students.

Research shows\* that lighting with higher illumination levels and higher colour temperature shows positive effects on the level of concentration and/or oral reading fluency.

\*<http://lightingforpeople.eu/lighting-in-education/>





# Vision Connected Lighting

For students in universities, colleges and schools, concentration is key. To keep people focused from the start to the end of the day, the lighting needs to be right.

Connected lighting gives facility managers the control of the entire educational campus, estate or facility, allowing them to create the optimal learning environment. A connected system ensures that students are comfortable, productivity, and stay focused for longer.

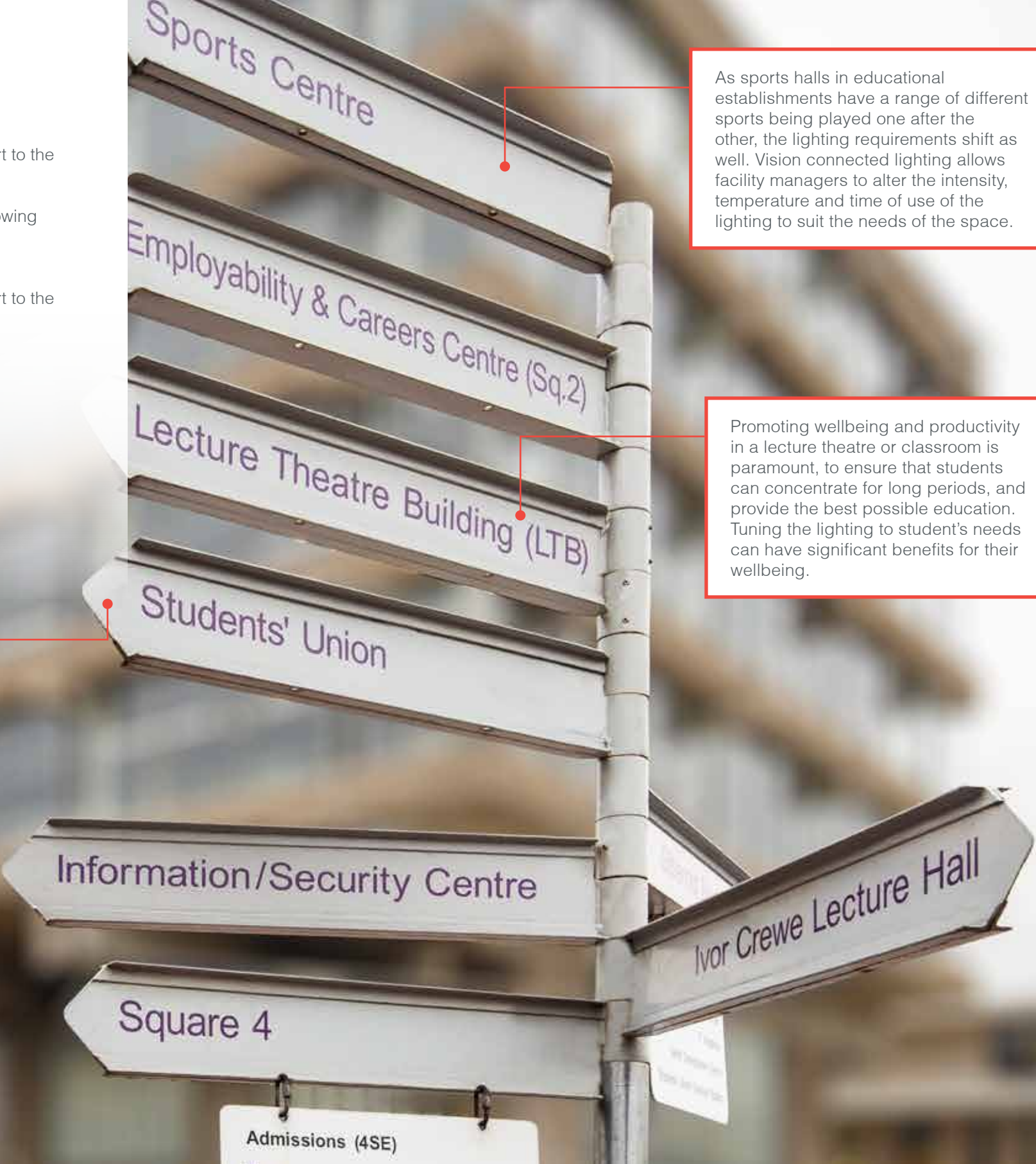
For students in universities, colleges and schools, concentration is key. To keep people focused from the start to the end of the day, the lighting needs to be right.

50% ENERGY SAVINGS CAN BE ACHIEVED WITH LIGHTING CONTROLS

In order to get the best out of students, the facilities need to meet their requirements. Cool white in late morning and midday, followed by warm white in the afternoon and evening matches the circadian rhythm, allowing students to keep alert and remain productive for longer.

As sports halls in educational establishments have a range of different sports being played one after the other, the lighting requirements shift as well. Vision connected lighting allows facility managers to alter the intensity, temperature and time of use of the lighting to suit the needs of the space.

Promoting wellbeing and productivity in a lecture theatre or classroom is paramount, to ensure that students can concentrate for long periods, and provide the best possible education. Tuning the lighting to student's needs can have significant benefits for their wellbeing.



# Lighting for Education



## Lecture Theatres

Studies have shown that optimised lighting can help improve overall physical health and wellbeing for students and pupils. Deploying more sophisticated lighting control or sensor-triggered systems, makes it possible to adjust lighting settings to match changing requirements throughout the course of the day.



## Classrooms

Lighting plays an important role in creating the right environment for the students and the teacher. Using the right kind of light to create an inclusive natural environment, free from distractions and glare, is essential to creating a positive classroom environment that enhances student wellbeing, significantly improving long-term performance as a result.



## Corridors

Corridors in education environments fluctuate between being totally empty, and full with students. Therefore, the lighting in corridors must be able to facilitate both scenarios. Occupancy sensors and lighting controls can ensure that the lighting is dimmed when the corridor is not in use, and full output when busy. This maintains energy efficiency, reducing energy costs in the long term, and ensures that there is sufficient illumination when the space is crowded.



## Sports Halls

The best sports halls need high performance lighting if students are to achieve their sporting potential. These spaces demand lighting that meets strict criteria. It must be robust enough to withstand the impact of fast moving objects - and yet offer the best possible energy saving and low maintenance characteristics. All of this must be coupled with maximum uniformity of light and the least possible glare.



## Receptions

Lighting in a reception area plays an important role for making visitors welcome, aiding the transition from outside to inside the heart of the campus, school or college itself. Bright, yet comfortable lighting is ideal for reception environments in education facilities, as it makes students feel familiar with their surroundings.



## Emergency

Emergency lighting in educational facilities is crucial, and is a priority for facility managers of universities, colleges and schools. BS 5266 is a legal code of practice, stipulating that emergency lighting must highlight all possible escape routes to the "place of safety", usually at an assembly point outdoors. Education buildings receive a number of visitors who may not be familiar with the surroundings, including young children, and contain rooms with minimal access to natural light, such as toilets and storerooms. The emergency lighting, therefore, needs to illuminate the floor to a minimum of 1 lux in the event of an emergency. This will make escape routes clear, to avoid panic and allow occupants to exit the building.



# Education Products

Tamlite has a wide range of products designed for the education sector. The key to Lighting for Education environments is to provide low glare illumination in classrooms. Our education products are fitted with specialised diffusers, to prevent intrusive light and ensure that staff and students can concentrate for longer.

Tamlite designs education lighting solutions to provide the optimal level of illumination, without causing discomfort. Low glare diffusers and Lambertian distribution of the light ensures that the output levels can be increased without the creation of visible glare. Visible glare can cause headaches and stress, so the use of Tamlite low glare fittings can have significant benefits for students in terms of wellbeing and long-term performance.

Education lighting solutions also need to be energy efficient. According to the Carbon Trust, lighting accounts for around **8% of energy load**, but for **20% of the total energy cost**. This is down to old fluorescent lighting systems being used in education facilities, which are still costly to run. A switch to high efficiency LED lighting solutions significantly reduce energy costs in universities, colleges and schools, even with the same usage levels.

Talk to us about funding - Tamlite LED solutions can be used in association with Salix Finance.



ADVANCE

- Recessed LED module with profiled diffuser
- I-Tech contoured diffuser provides excellent glare control with EN-12464 compliance
- Suitable for office installations and general or task area lighting



HORIZON COMFORT

- I-Tech centre diffuser provides accurate light control
- Suitable for use in VDU areas such as offices, schools and universities. High output version also ideal for Retail and Commercial areas
- 3 different outputs for low, medium or high spacing layouts



MODLED LG

- Tamlite I-Tech diffuser designed for low glare reduction to EN-12464
- High performance LED module and driver
- Tunable white also available



PRIMA

- Opal diffuser for wide beam distribution
- Secured end caps
- Gear options including DALI and emergency available



ARCO

- Modern stylish profile ideal for architects and designers
- Indirect and direct output continuous system
- White or silver grille optic also available



ELAN

- Tamlite I-Tech diffuser designed for low glare reduction to EN-12464 compliance
- High performance opal optic for high efficacy and glare control
- Suitable for office, schools and hospital applications

# Case Study

## Kirklees College

### Yorkshire

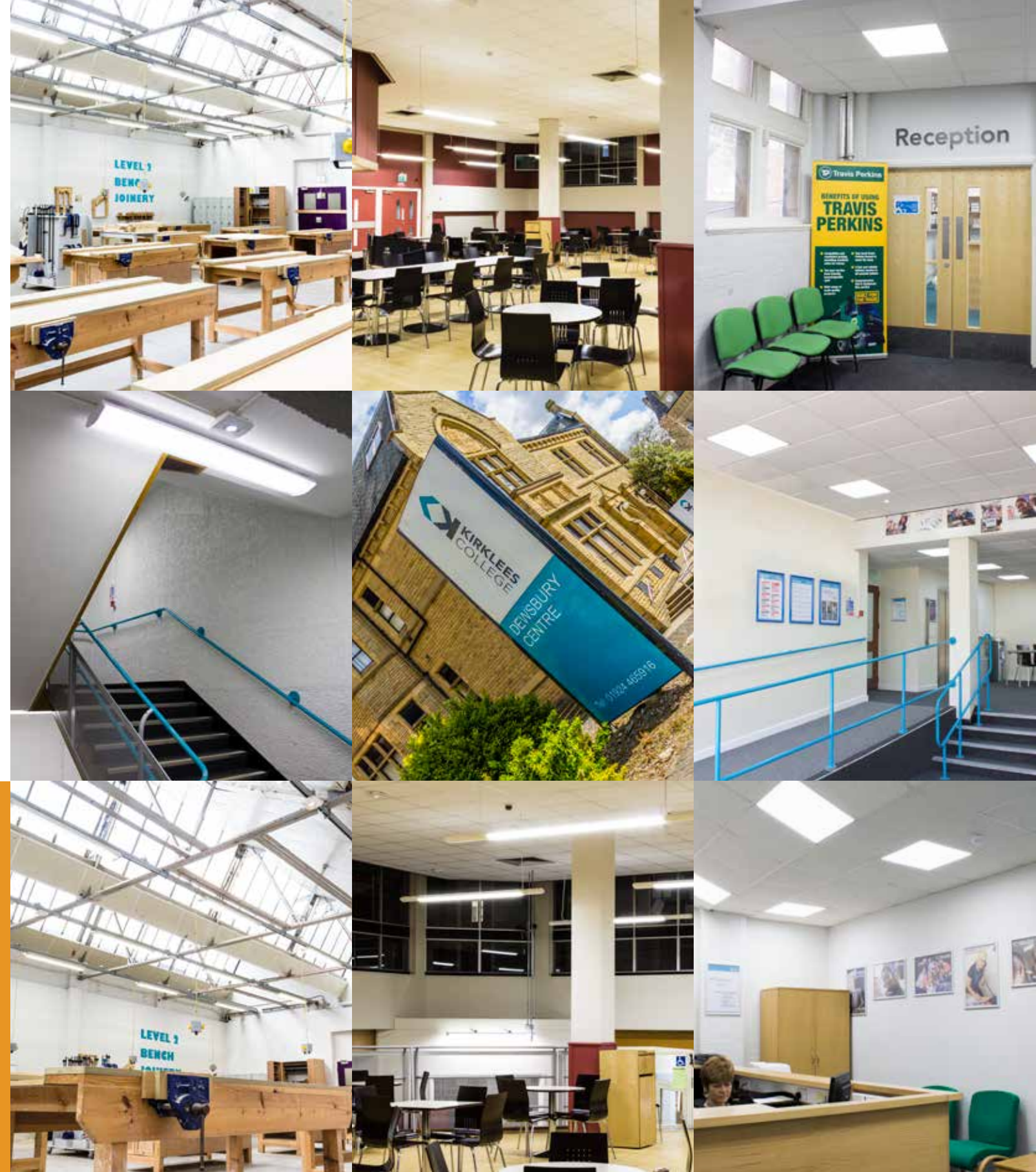
Kirklees College required a new lighting system that would provide better illumination, lower maintenance, and greater energy efficiency. An installation of the latest LED lighting from Tam-lite Lighting dramatically reduced the energy consumption at the college's Dewsbury Centre.

As one of the biggest further education colleges in the country, with more than 20,000 students enrolled at its various Yorkshire campuses, Kirklees inevitably has a high energy demand, with good-quality lighting for its thousands of students forming a large part of this demand.

One of the main areas that required a lighting upgrade were the joinery and technology rooms. These hazardous spaces are liable to dust build-up, so it was important that the lighting was resistant to dust ingress. IP65-rated XTREME solutions were installed for the tech-rooms.

Included in the upgrade were MODLED panels. These low glare fittings are ideal for communal areas and classrooms, as they allow students to focus for longer. In colleges, this is vital, to ensure that students are getting the most out of the facilities.

The new lighting system significantly improved the energy efficiency at Kirklees College, by reducing the power consumption at the site. It was important that the lighting was both energy efficient as well as functional, and Tam-lite supplied a solution that was ideal for the college.



## Products Used



XTREME



MODLED



ARCO



# Case Study

## Hastings High School

### Hinckley

Hastings High School, Hinckley, is an 11-16 academy, with over 800 students. As a prominent school in the local community, Hastings knows the importance of providing the best education environment possible for its pupils.

Tamlite Lighting was chosen to supply an LED luminaire and control solution for the school. Ideal light levels without glare is crucial in classrooms. Glare leads to uneven light distribution, eye strain and headaches, which can have a negative impact on the wellbeing of students and staff. To ensure that staff and students maintain focus and concentration within a productive environment, the MODLED LG panels, designed with an I-Tech diffuser, were specified.

Hastings also needed an energy efficient system to replace the old fluorescent lighting. The initial energy saving for Hastings was an impressive 65% reduction in power consumption with the same usage levels. However, Hastings needed a solution that continued to deliver a reduction in energy consumption beyond the initial switch to LED. This has been achieved by installing a variety of Tamlite VISION controls throughout the school. From occupancy sensors alone, Hastings can expect energy savings of £10,950 per annum.

Tamlite EXPO fittings were installed in the main hall and gymnasium. These high-output luminaires are ideal for sports environments and assemblies. In the gym, used for sports such as basketball and football, the fittings are covered with a wire guard, giving extra protection to the fittings.



## Products Used



MODLED LG



EXPO



# Case Study

## The Abbey School

### Faversham, Kent

Attended by over 1000 pupils aged 12-18, The Abbey School is a business and enterprise academy in Faversham. With so many students, The Abbey School is dedicated to providing the ideal environment for all, to improve academic performance and enhance comfort among students and staff.

The Abbey School set about significantly upgrading the lighting system at the school, from classrooms and communal areas to the sports centre. The new lighting scheme was funded utilising the **Salix loan agreement**, as the lighting system significantly improved energy efficiency at the school.

To ensure that students and staff are comfortable, whilst remaining productive, low glare battens were installed in classroom and computer rooms. A lighting solution that created a bright, welcoming environment in classrooms was supplied, while reducing the prevalence of discomfort glare, to boost performance and create a more productive working environment.

Tamlite supplied a lighting solution for the school's sports hall, as well as the sports hall and gym at the attached Abbey Sports Centre. This lighting upgrade significantly reduced energy consumption for the school and sports centre, realising savings of over 61%.

Kevin Dickens, Deputy Head at Abbey School, commented, "The larger areas, such as the school hall and sports facilities have been transformed from dull, dimly lit areas to bright and welcoming spaces that promote engagement in learning and wellbeing."



## Products Used



MODLED LG



TBX LG



SAPPHIRE



## Tamlite Lighting Sales Centre

Tamlite Field Sales Centre,  
Park Farm Industrial Estate,  
Redditch,  
Worcestershire,  
B98 0HU

T. 01527 517 777  
E. [sales@tamlite.co.uk](mailto:sales@tamlite.co.uk)  
W. [tamlite.co.uk](http://tamlite.co.uk)

Over 50 years Lighting for a Living

LIAQA AWARD  
WINNER 2017

